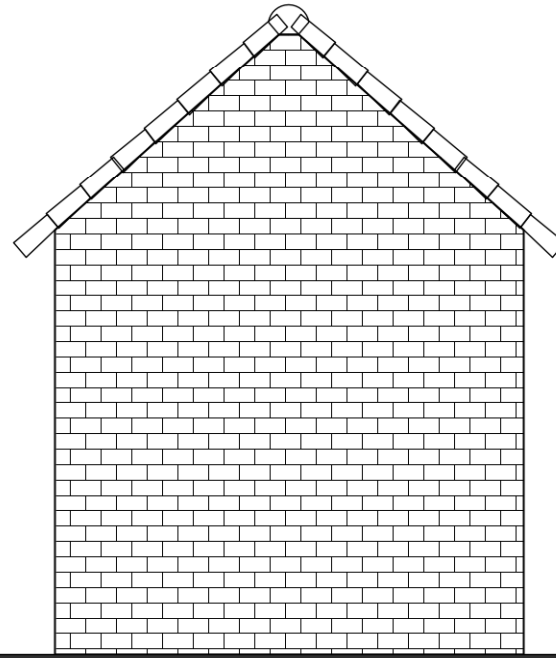
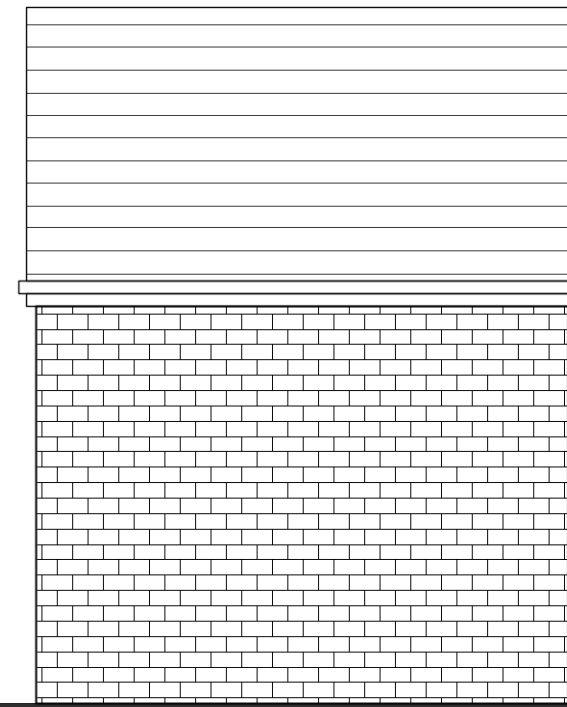


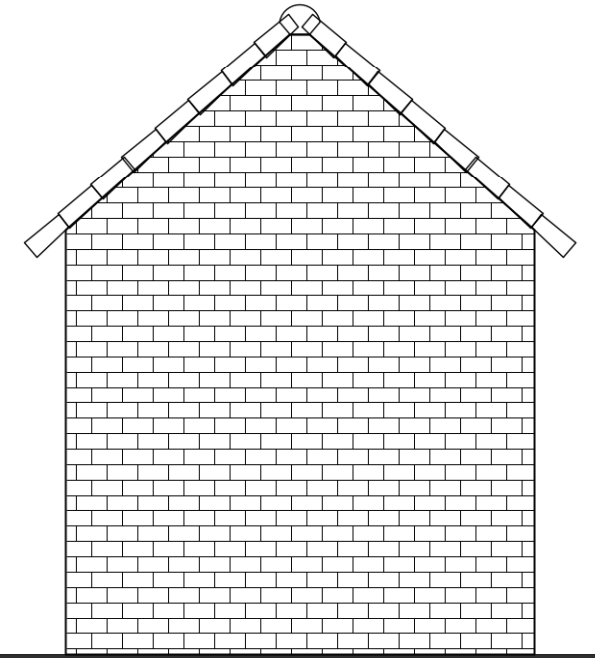
FRONT ELEVATION



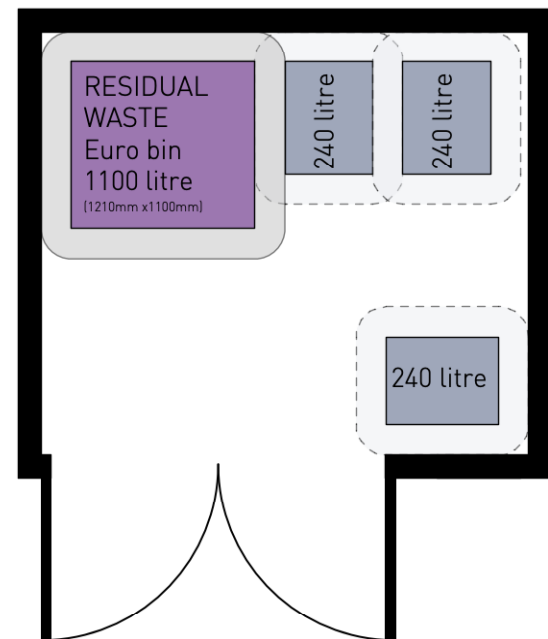
FRONT ELEVATION



REAR ELEVATION



SIDE ELEVATION



FLOOR PLAN

REFUSE STORAGE CALCULATIONS

Auden apartments (X9)

4No. 1 BED
150 Litres each = 600 Litres
5No. 2 BED
200 Litres each = 1000 Litres

Total required = 1600 Litres

Minimum Waste required (60%) = 960 Litres
Minimum Recycling (40%) = 640 Litres

Provided:
Waste required (60%) = 1100 Litres
Recycling (40%) = 720 Litres

Total provided = 1820 Litres

Size of Unit and Total Storage Capacity Required for Refuse and Recycling

Size of Unit	Total Storage Capacity
Single room unit	100 litres
Two room unit	150 litres
Three room unit	200 litres
Four room unit	250 litres
Five room unit	300 litres
Six room unit	350 litres

Appendix 1 - Advice on the Design of Waste and Recyclables Storage and Collection Requirements. Taken from 'Consultations Development Management Submission Document' Rochford District Council

LAND EAST OF ASHINGDON ROAD, ROCHFORD - REFUSE STORAGE

