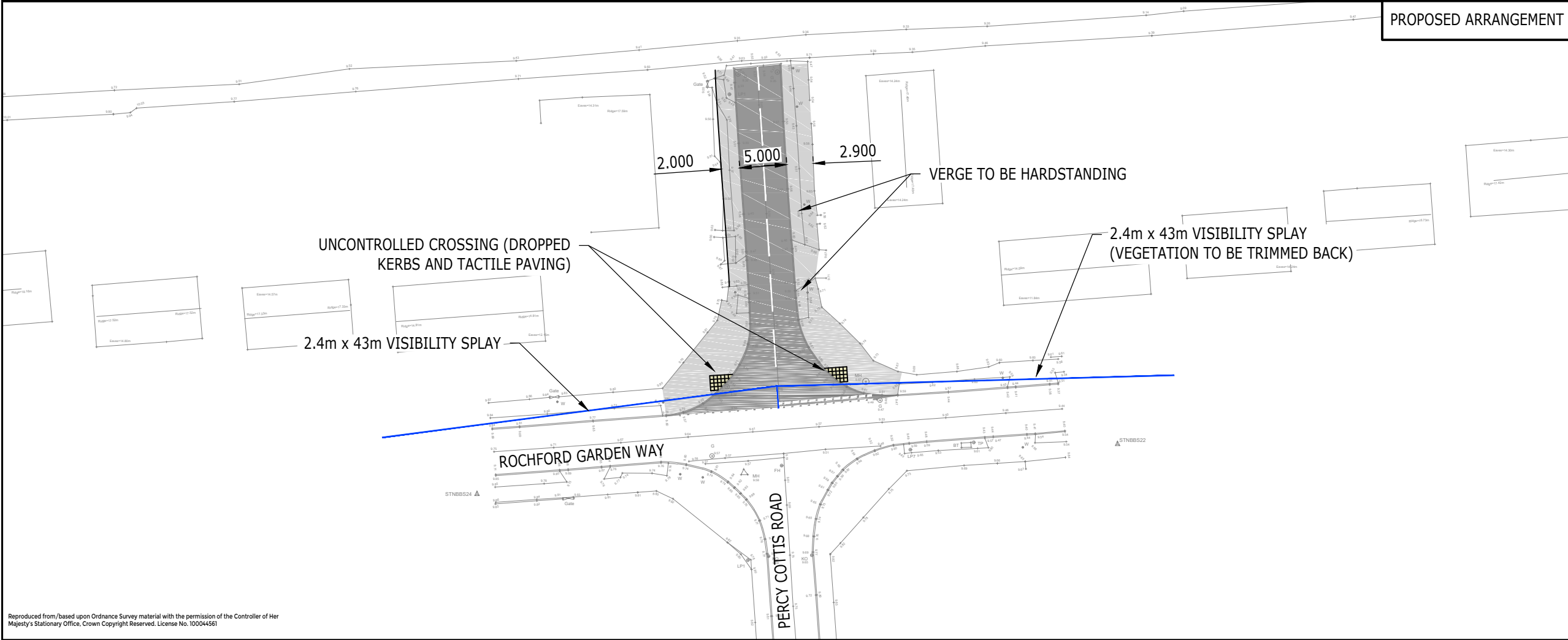


EXISTING ARRANGEMENT



PROPOSED ARRANGEMENT

- KEY**
- HIGHWAY BOUNDARY TRANSCRIBED FROM ECC RECORDS
  - CARRIAGEWAY
  - FOOTWAY OR FOOT/CYCLEWAY

A	JUNCTION CONTROLLED CROSSING/HIGHWAY BOUNDARY ADDED.	DV	DV	SAF	03.10.19
Rev	Description	Drn	Chk	App	Date

**ARDENT** CONSULTING ENGINEERS

Third Floor  
The Hallmark Building  
52-56 Leadenhall Street  
London  
EC3M 5JE

Tel: 020 7680 4088  
Web: www.ardent-ce.co.uk  
E-mail: enquiries@ardent-ce.co.uk

**WORKS**  
www.works.co.uk

**SSIP**  
www.ssiptesting.com

**BSI**  
www.bsi.com

Client  
**BLOOR HOMES**

Project Title:  
**LAND EAST OF ASHINGDON ROAD, ROCHFORD**

Drawing Title:  
**PROPOSED SITE ACCESS FROM PERCY COTTIS ROAD**

A3 Scale	Date	Designed by
1:500	21.12.18	DV
Drawn by	Checked by	Approved by
DV	DV	SAF

Drawing Number **185180-002** Rev **A**

Reproduced from/based upon Ordnance Survey material with the permission of the Controller of Her Majesty's Stationary Office, Crown Copyright Reserved. License No. 10004561