

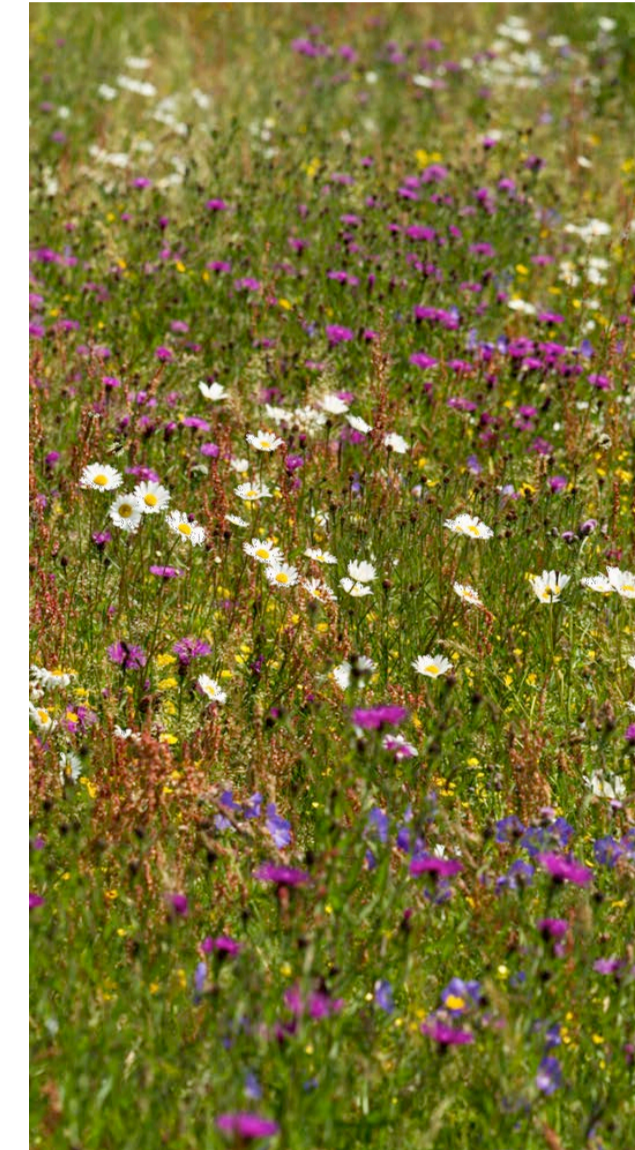
MEADOW GRASSLAND WITH TREE PLANTING AND A MOWN PATH



POTENTIAL TO INCLUDE MORE NATURAL HEADWALLS / INLETS AS PART OF THE SUDS TO INTEGRATE INTO LANDSCAPING



MULTI-STEM BETULA TREE PLANTING TO ADD VISUAL INTEREST THROUGH FOLIAGE AND BARK



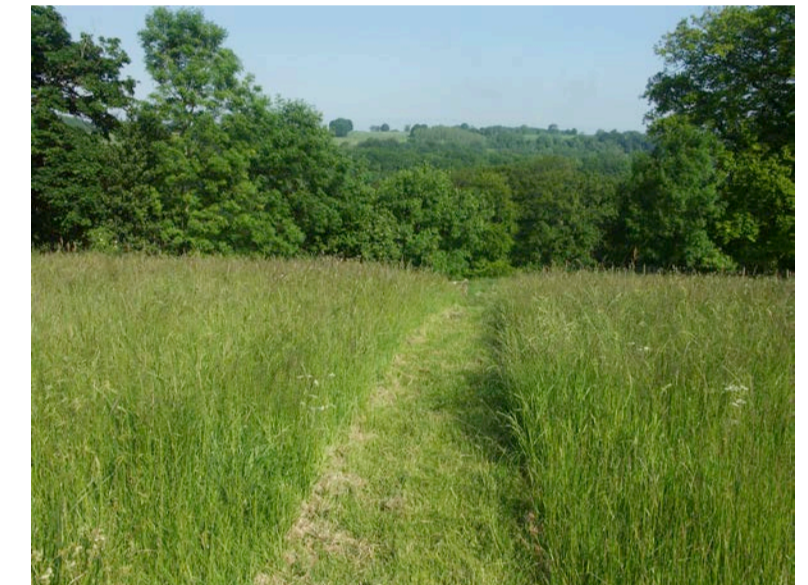
FORMAL WILDFLOWER MEADOW TO PROVIDE HABITAT OPPORTUNITIES AND VISUAL INTEREST TO CONTRAST THE INFORMAL MEADOW GRASSLAND - MIX TO SUIT GROUND CONDITIONS AND BE SPECIES RICH



SCREENING PLANTING AROUND CULVERT WITHIN EAST-WEST GREEN CORRIDOR TO SOFTEN EDGE WITHIN GREENSPACE



TREE PLANTING WITHIN MEADOW GRASSLAND



MOWN PATHS WITHIN MEADOW GRASSLAND TO PROVIDE ACCESS THROUGH BASIN



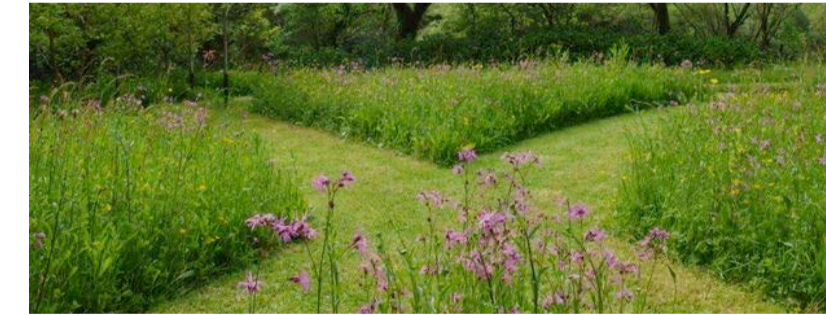
TREE SPECIES TO BE CHOSEN FOR THEIR PHYSICAL AND VISUAL ATTRIBUTES SUCH AS FOLIAGE, BARK, SEASONAL INTEREST, BENEFIT FOR WILDLIFE



FORMAL AVENUE STYLE TREE PLANTING TO PROVIDE A CLEAR EDGE TO THE GREENSPACE



POTENTIAL TO INCLUDE BOULDERS WITHIN BASIN TO PROVIDE INFORMAL PLAY OPPORTUNITIES



MOWN PATH THROUGH FORMAL WILDFLOWER MEADOW TO PROVIDE WALKING ROUTE AND ENCOURAGE USE OF THE GREENSPACE

KEY

- FEATURE TREE PLANTING
- AVENUE TREE PLANTING
- TREE PLANTING
- HEDGEROW PLANTING
- NATIVE SHRUB PLANTING
- SHRUB & HERBACEOUS PLANTING
- MARGINAL PLANTING TO SWALE
- AMENITY GRASS WITH BULB PLANTING
- SPECIES RICH MEADOW GRASSLAND MIX TO SUIT GROUND CONDITIONS (TBC)
- MOWN PATH THROUGH FORMAL MEADOW MIX TO SUIT GROUND CONDITIONS (TBC)
- FOOTPATH
- FOOTPATH / CYCLEWAY
- SECTION OF BOARDWALK OVER SWALE TBC - SUBJECT TO DETAILED DRAINAGE
- PROPOSED DRAINAGE REFER TO PLAN BY OTHERS FOR DETAILS
- AREAS OF HARD LANDSCAPE WITH SEATING OPPORTUNITIES & BINS AT KEY LOCATIONS
- CYCLE STAND
- DRAINAGE FEATURE - SWALE (TBC)
- EXISTING DITCH TO BE RETAINED & INTEGRATED INTO DRAINAGE STRATEGY (TBC)
- INFORMAL PLAY OPPORTUNITIES - STEPPING LOGS & BOULDERS
- PROPOSED KNEE RAILING

Revisions:
 First Issue- 27/08/2020 RVF
 A - (24/09/2020 RVF) Updated to revised site layout
 B - (10/11/2020 RVF) Drawing title updated (only)
 C - (21/12/2022 IHV) POS amended to latest housing layout
 D - (22/12/2022 IHV) Trees adjusted to avoid northern basin easements
 E - (03/01/2023 IHV) Minor amends to Ph2 and 3 layouts following client review
 F - (10/01/2023 IHV) Minor amends to Ph2 layout
 G - (12/05/2023 LAB) Minor amends to Ph2 and 3 layouts

Landscape Masterplan - Green Corridor (Sheet 2of2)

Rochford

Client: Bloor
 DRWG No: P18-2109_83 Sheet No:2 REV: G
 Drawn by: RVF/ LAB Approved by: MCC/ RVF
 Date: 12/05/2023
 Scale: 1:400@A1

