








Legend

-  Rochford Council Administrative Boundary
 -  Main River
 -  Artificial (Undivided)
 -  Landslide Deposits (Undifferentiated)
- Infiltration SUDS Suitability**
-  Infiltration SUDS potentially suitable
 -  Infiltration SUDS potentially unsuitable
 -  Enhanced site investigation required

Notes:

This map forms an approximate guide to permeability. However, for all new developments, site investigation is required to confirm local permeabilities and infiltration rates.

Drawing Status: **FINAL**

Job Title: **South Essex Surface Water Management Plan**

Drawing Title: **Rochford District Council Infiltration SUDS Suitability (BGS Permeability) Map**

Scale at A3: **1:110,000**

Drawn by	Date	Approved	Date
Ryan Cox	09/05/11	Trevor Muten	10/05/11

Scott Wilson
 Scott House, Alencon Link,
 Basingstoke, Hants, RG21 7PP
 Telephone (01256) 310 200
 www.scottwilson.com


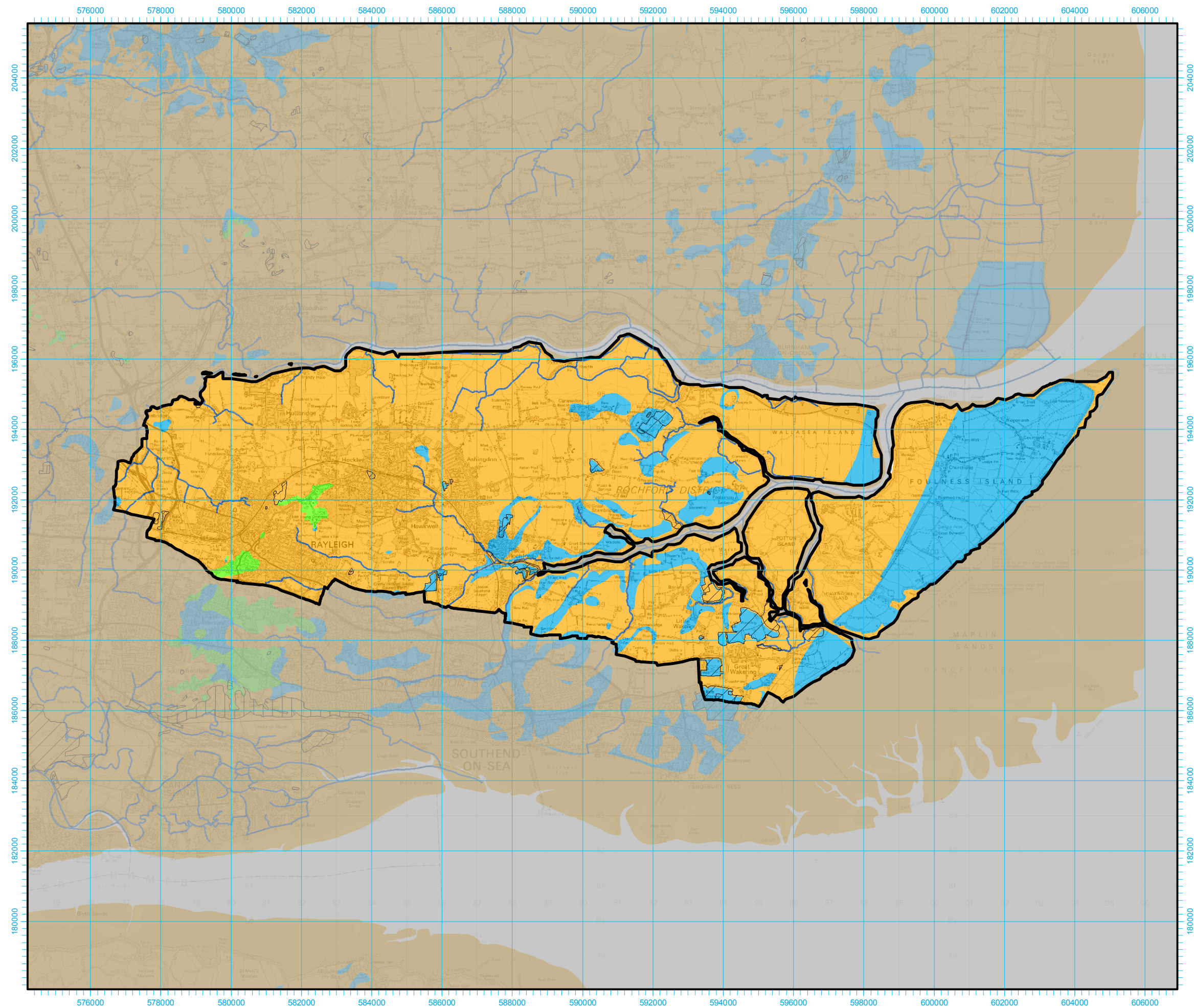
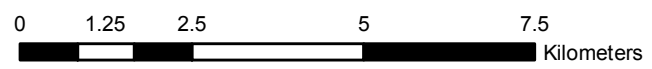


FIGURE 7-2

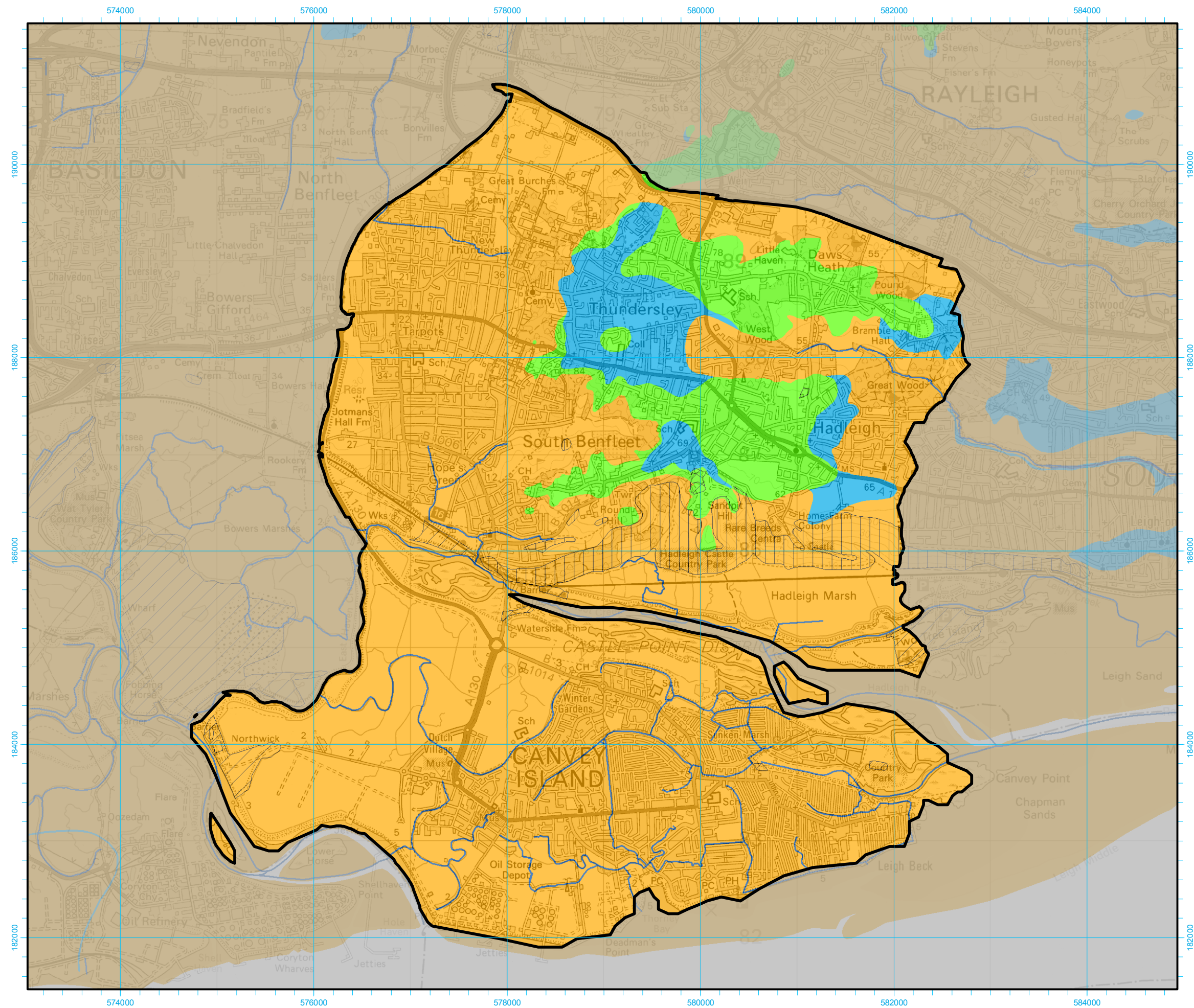


*Reproduced from 1:50 000 by permission of Ordnance Survey on behalf of the Controller of Her Majesty's Stationery Office © Crown Copyright 2008. All rights reserved. Reference number [0100031673].
 *Digital groundwater flooding susceptibility map reproduced from British Geological Survey (c) 2011'



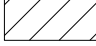
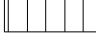



Base Map Details
 Projection: Transvers Mercator
 Scale Factor: 0.999601
 Origin: 2° West, 49° North
 Coordinates: 400000, -100000
 Units: metres
 Datum: OSGB 1936



K:\jobs\132233_South Essex SWMP\700 Technical\711 GIS\01 Layout



Legend

-  Castle Point Administrative Boundary
-  Main River
-  Artificial (Undivided)
-  Landslide Deposits (Undifferentiated)
- Infiltration SUDS Suitability**
-  Infiltration SUDS potentially suitable
-  Infiltration SUDS potentially unsuitable
-  Enhanced site investigation required

Notes:

This map forms an approximate guide to permeability. However, for all new developments, site investigation is required to confirm local permeabilities and infiltration rates.

Drawing Status: **FINAL**

Job Title: **South Essex Surface Water Management Plan**

Drawing Title: **Castle Point Borough Council Infiltration SUDS Suitability (BGS Permeability) Map**

Scale at A3: **1:40,000**

Drawn by	Date	Approved	Date
Ryan Cox	09/05/11	Trevor Muten	10/05/11

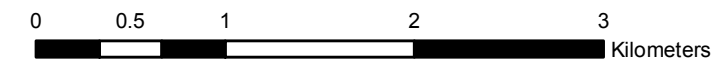
Scott Wilson
 Scott House, Alencon Link,
 Basingstoke, Hants, RG21 7PP
 Telephone (01256) 310 200
 www.scottwilson.com



FIGURE 7-3

*Reproduced from 1:50 000 by permission of Ordnance Survey on behalf of the Controller of Her Majesty's Stationery Office © Crown Copyright 2008. All rights reserved. Reference number [0100031673].
 *Digital groundwater flooding susceptibility map reproduced from British Geological Survey (c) 2011'

Base Map Details
 Projection: Transverse Mercator
 Scale Factor: 0.999601
 Origin: 2° West, 49° North
 Coordinates: 400000-100000
 Units: metres
 Datum: OSGB 1936



K:\jobs\132233_South Essex SWMP\700_Technical\711_GIS\01_Layout