

Rochford District Council & RSPB

Heritage Growth Project



Heritage Growth Project

- Making the most of the District's heritage
 - ✓ Local, national and international significance
- Final resting place of Darwin's HMS Beagle
- Over £50 million invested in coastal habitat restoration on Wallasea Island - largest intertidal island coastal project of its type in Europe
- Aims to:
 - ✓ Attract, educate and engage with people on maritime, natural, and coastal heritage
 - ✓ Coincide with 200th Anniversary of HMS Beagle launch
 - ✓ Maximise the opportunity of the new national coastal path

**HMS
Beagle
1820-
1870**



The search for the last resting place of HMS Beagle...



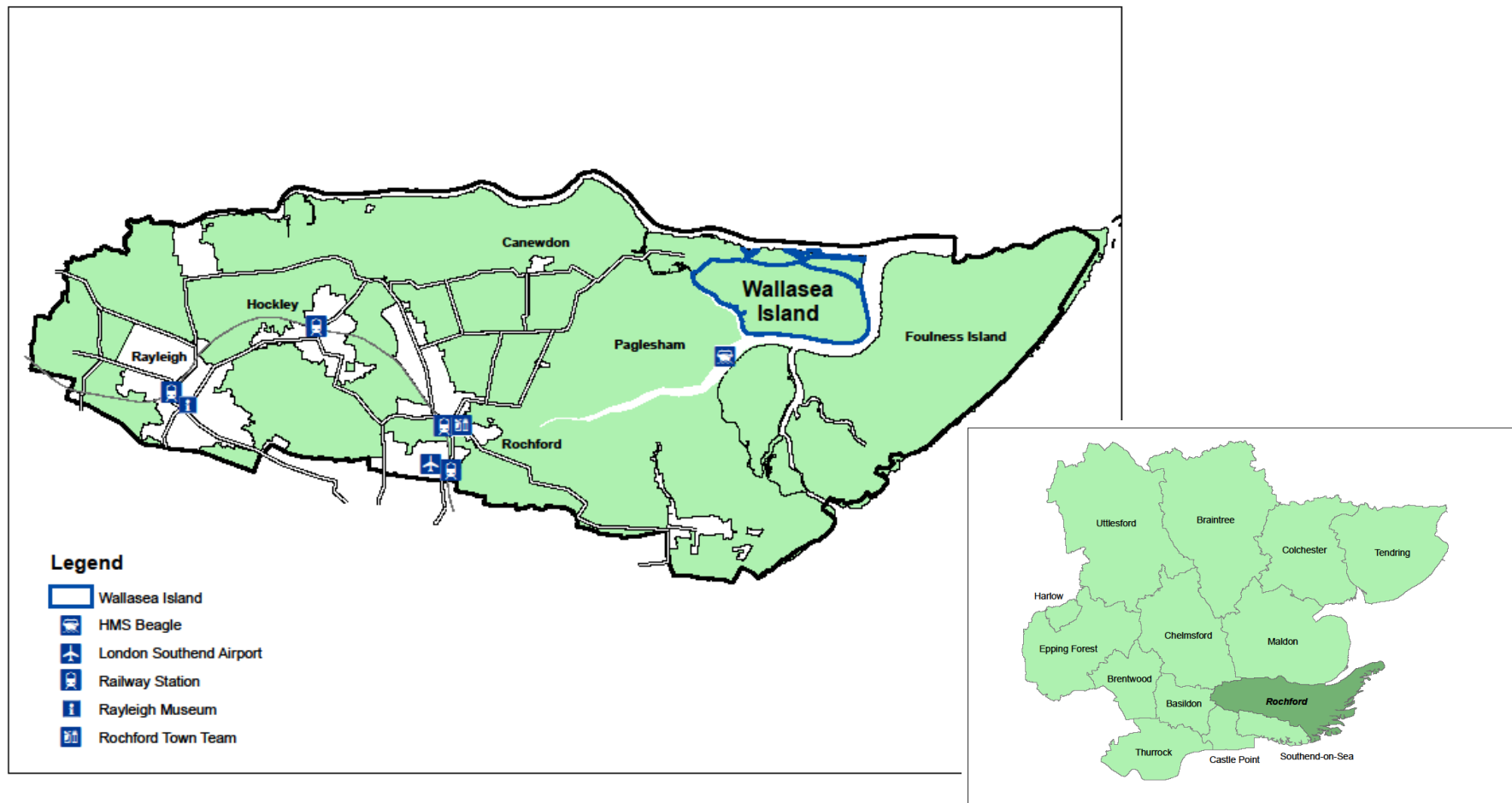
Heritage Growth Project Strategy

Working together with the RSPB, the Council plans to commemorate HMS Beagle's 200th anniversary in May 2020 through an event at RSPB's Wallasea Island with interpreted views to where the ship was last stationed (including virtual reality), 3 named lagoons (Beagle/Darwin/Fitzroy), paths and trails themed with interpretation.

The longer aim is to further develop visitor facilities to make the most of this unique opportunity and facilitate economic growth through increased tourism and employment.

Where is Wallasea Island, Rochford?

- Situated within Essex on the East Coast of England





Wallasea Island Wild Coast Project

- Creating a New Coastal Destination
- The RSPB's Perspective : Doing Things to Talk About..
- Coastal Transformation - Complex and Challenging

2012



2015



Managing a changing coast

Threats of sea level rise and climate change –
keeping pace with losses (30,000ha by 2050)

Developing technical solutions

Building public understanding and support

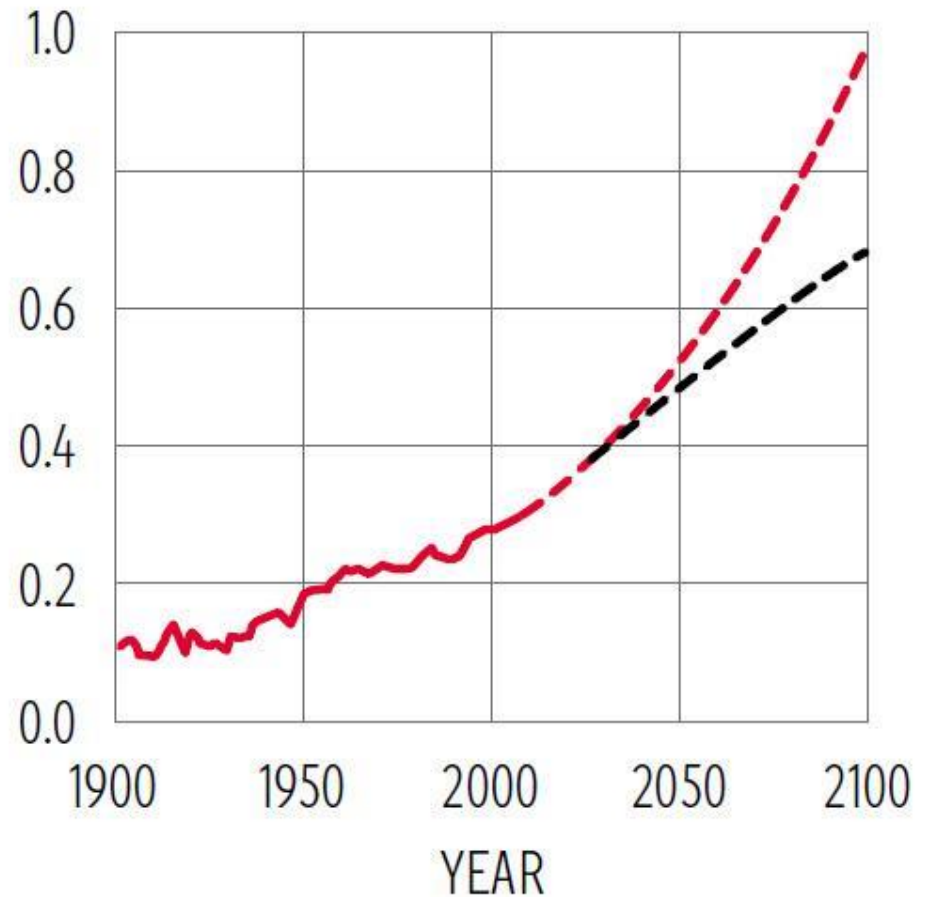


Sea Level Rise & Climate Change

SEA LEVEL RISES

PROJECTIONS: **---** VERY HIGH EMISSIONS
- - - VERY LOW EMISSIONS

METRES

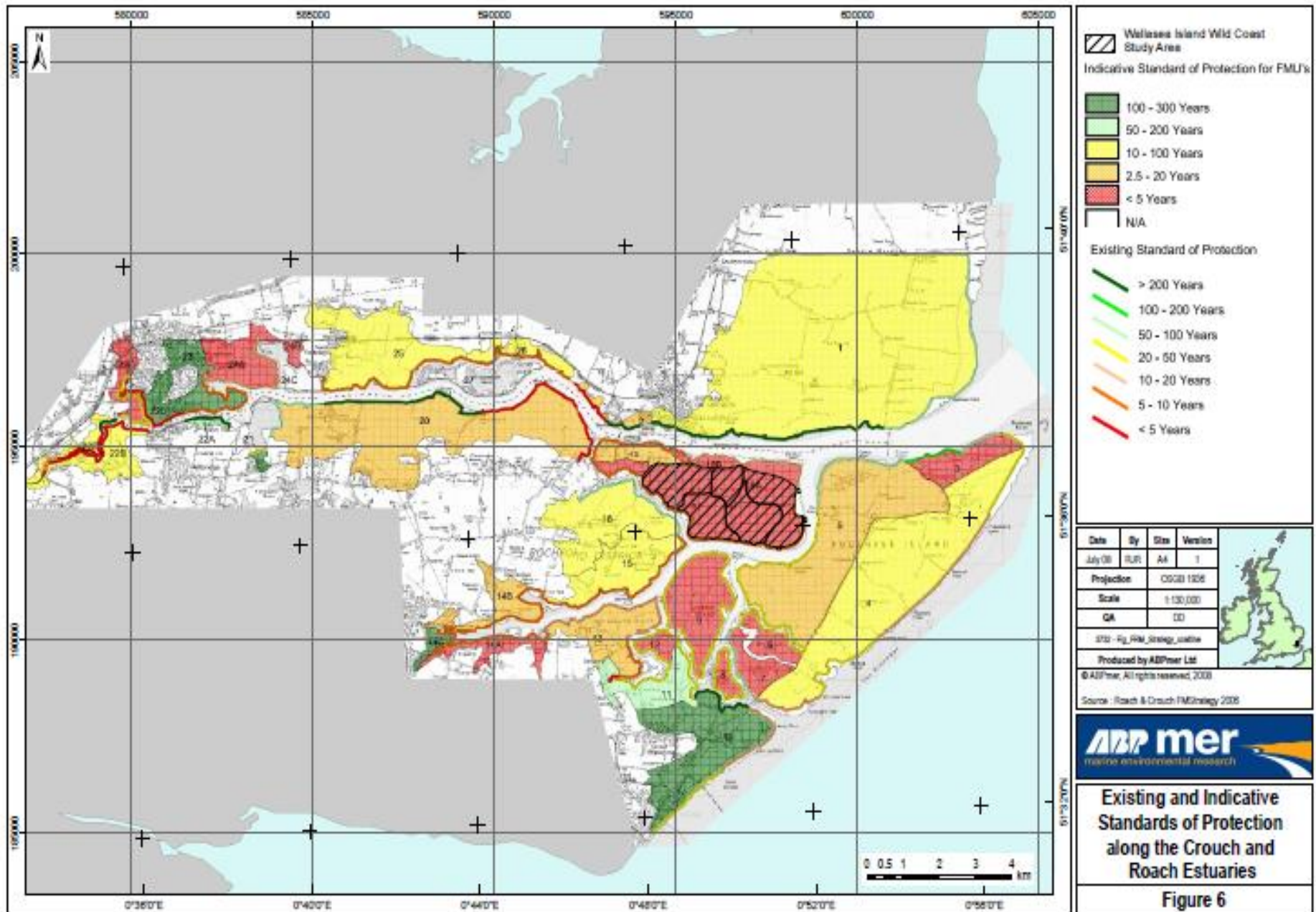


SOURCE: IPCC

Freiston Shore (The Wash)



giving
nature
a home



Wallasea Island 2007



Foulness Island

Paglesham

Wal



© 2007 Europa Technologies
Image NASA
© 2007 Infoterra Ltd & Bluesky
Image © 2007 The GeoInformation Group

© 2005 Google

Wallasea Island Wild Coast Project

Four main aims:

To create new intertidal habitats to compensate for losses in the Crouch/Roach Estuaries and to offset historic losses of coastal BAP habitats and species in the UK

To avoid the flood damage risks to the Crouch/Roach Estuaries and Wallasea Island that exist from a future unmanaged breach of the existing seawalls

To create an extensive area of accessible coastal land for the quiet enjoyment of nature and open space, reconnecting people with their coastal heritage

To demonstrate through a large-scale practical example adaptation to climate change and sea level rise on the coast.

*Europe's largest inter-tidal
habitat creation project*

Regulated Tidal Exchange Design - 2007



- Habitats
- Breach
 - Breakwater
 - Camp Site
 - Inlet
 - Lagoons
 - Mudflat
 - Oysters
 - Platform
 - Pool
 - Saltmarsh
 - Present Wall
 - Internal Wall

Date	By	Size	Version
Nov07	RJR	A3	1
Projection	Scale		
OSGB 1936	1:12,000		
Reference			
3732 -Working_Scheme8.mxd			
Produced by ABPmer Ltd			
© ABPmer. All rights reserved, 2007			



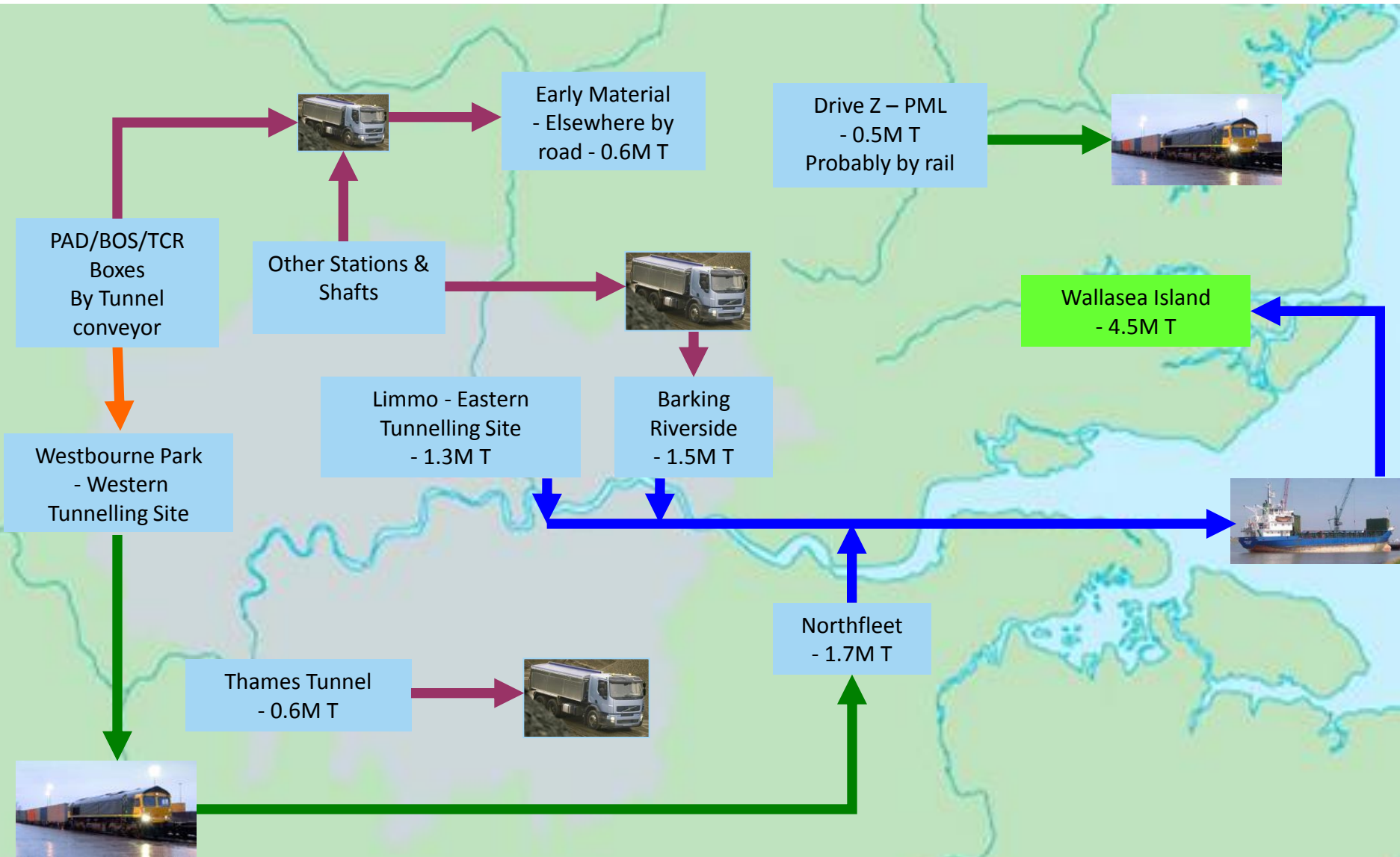
Scheme 8 Habitats
Draft

Figure

Managed Realignment/ Excavated Fill Design -2008



Excavated Material – Central Section (Tonnes)



Planning Application - 2008

Wallasea Island Wild Coast Project
– creating a new coastal nature reserve



Planning Application Documentation



November 2008

Wallasea Island Wild Coast Project
– creating a new coastal nature reserve



Environmental Statement



November 2008









Crossrail
MAYOR OF LONDON
Department of
Transport
NARY W...
Transp
for Lo



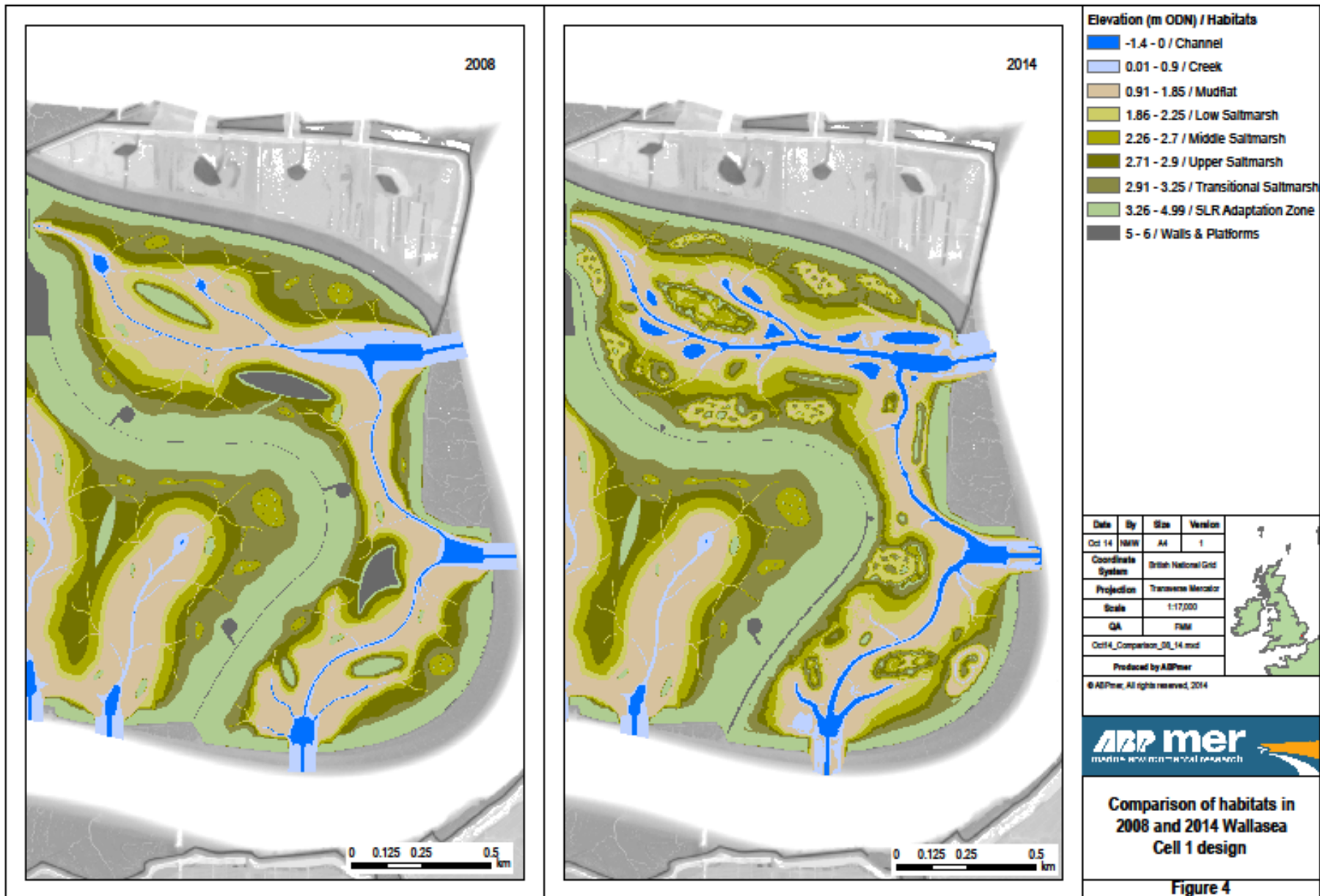






8 8 2013















Mr. [Name] is a member of the RTPI and has been awarded the Planning Achievement Award for his work on the [Project Name].

RTPI
The Royal Town Planning Institute
11, Bedford Square, London, WC1R 4EJ
Tel: 020 7625 4600
www.rtpi.org.uk

PLANNING ACHIEVEMENT

RTPI
mediation of space-making of place

W
J
S

Wallasea Island Awards Schedule 2012-17

Award Title	Category	Result
Royal Town Planning Institute Awards 2012/13	East of England Achievement	Winner
	National Planning Excellence	Highly Commended
Green Apple 2014	Environmental Best Practice	Winner
Environment Agency Project Excellence Awards 2015	Sustainable Resource Management	Winner
Association of Project Management - Planning & Placemaking Awards 2015	Mike Nichols Award for Inspiration	Highly Commended
Birdwatch Magazine - Birders' Choice Awards 2015	Site of the Year	Winner
Association of Project Management - Planning & Placemaking Awards 2016	Sustainability	Highly Commended
	Regional - South of England	Shortlisted
Environment Agency Project Excellence Awards 2016	Sustainable Resource Management	Winner
Ground Engineering Awards	Geoenvironmental Project	Winner
Construction News Awards 2016	Project of the Year £50m+	Finalist
	Sustainable Project of the Year	Finalist
	Sustainable Company of the Year	Finalist
CIEEM Awards 2016	Innovation	Highly Commended
Considerate Constructors Scheme 2015	n/a	Winner - Bronze
ICE East of England Merit Awards 2016	Physical Achievement	Winner - Exceptional Merit
	Technical Excellence & Innovation	Winner - Highly Commended
	Sustainable Construction/Engineering	Winner - Merit
	Team Achievement	Winner - Merit
Constructing Excellence (East of England) 2016	Sustainability	Winner
	Project of the Year	Winner
Green Apple 2016	Environmental	Winner - Gold
Brownfield Briefing 2016	Best Reuse of Materials on a Project	Winner (Joint: Ecologia & BAM Nuttall)
Constructing Excellence (National) 2016	Sustainability	Winner
	Project of the Year	Finalist
ICE 'People's Choice' Award 2017	Public Vote	Third place - winner = Forth Road Bridge
AECOM Excellence Awards 2017	Inspire Category	Winner
RICS East of England Awards 2017	Infrastructure	Winner
	Regeneration	Highly Commended

International Collaboration: Twinning with the Marker Wadden Project (Netherlands)



**Twinned with
Chongming Dongtan
National Nature Reserve
(Shanghai, China)**



Developing the Nature Reserve



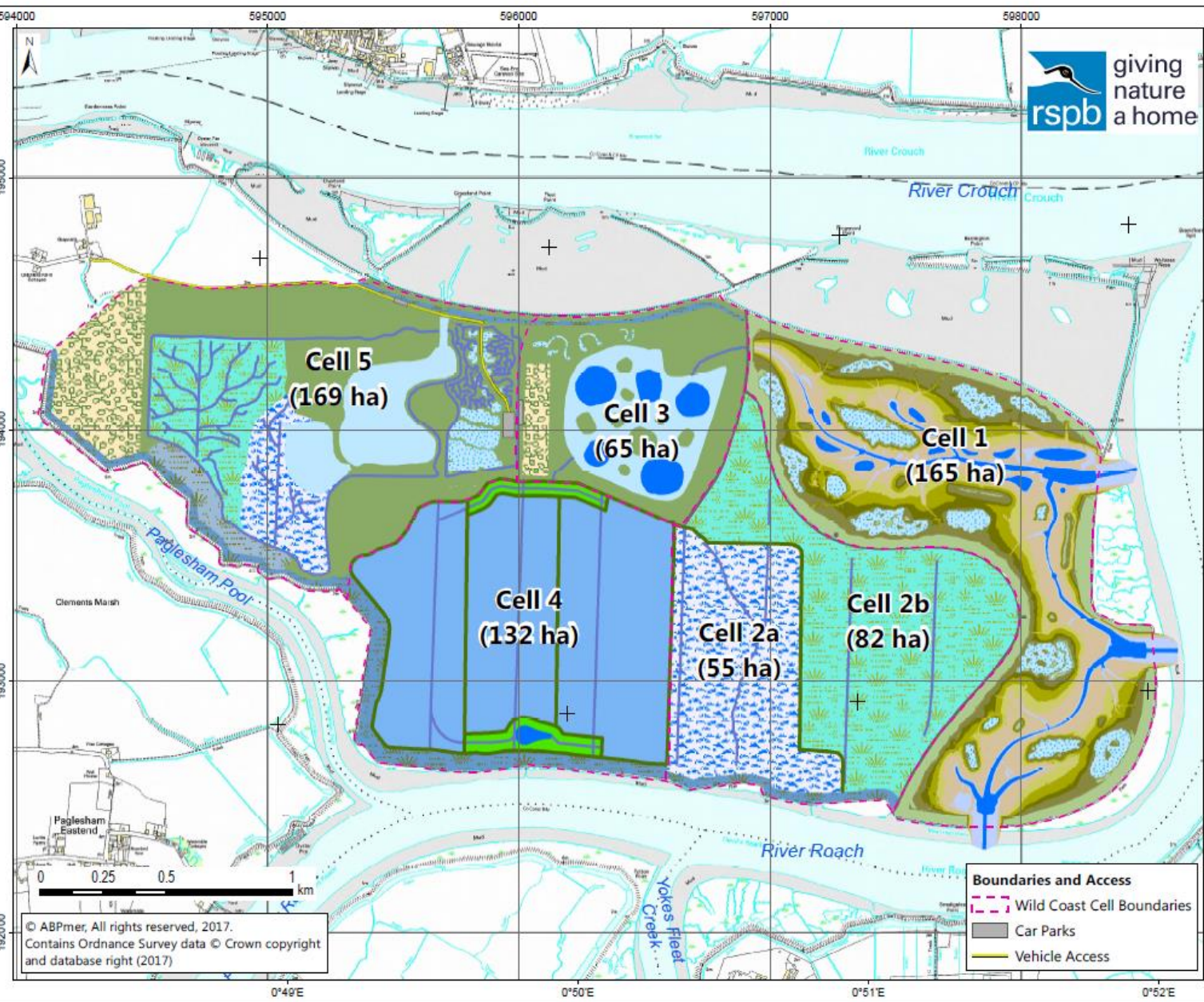
- Getting the habitats right
- Making the most of the opportunity for people to engage with their Natural, Maritime and Scientific Heritage
- Phased addition of paths, view points and visitor facilities to enhance visitor experience
- Realising the eco-tourism benefits – need for further investment



- Cell 1 / Jubilee Marsh**
- Elevation (mODN) / Habitats**
- -1.65 - 0 - Channels / Deep Pools
 - 0.01 - 0.9 - Creek
 - 0.91 - 1.85 - Mudflat
 - 1.86 - 2.25 - Low Saltmarsh
 - 2.26 - 2.7 - Middle Saltmarsh
 - 2.71 - 2.9 - Upper Saltmarsh
 - 2.91 - 3.25 - Transitional Saltmarsh
 - 3.26 - 4.99 - SLR Adaptation Zone
 - 5 - 8 - Walls & Platforms
 - Shallow High-level Lagoons
- Cells 3 and 5 Features / Habitats**
- Coastal Grazing Marsh
 - Brackish Marsh / Water Vole Habitat
 - Wild Bird Cover
 - Reptile Re-location
 - Existing Borrow Dyke
 - Shallow Lagoons
 - Tidal Exchange Lagoons
 - Cell 3 Deep Pools
 - Ditches
 - Vehicle Access
 - Car Parks
- Cells 2 and 4**
- (area still being farmed / design under consideration)
- © ABPmer, All rights reserved, 2016.

Date	By	QA
Sep 16	SRA	NMW
Coordinate System British National Grid		
Projection Transverse Mercator		
Project no.4154		
working_design_Sept16_v2.mxd		





- Cells 2 to 5 Features / Habitats**
- Cell 4 Distribution Areas
 - Cell 4 Dynamic Saline Lagoons
 - Freshwater Fields
 - Coastal Grassland
 - Brackish Marsh / Water Vole
 - Wild Bird Cover
 - Existing Borrow Dyke
 - Shallow Lagoons / Scrapes
 - Saline Tidal Exchange Lagoons
 - Saline Grassland
 - Deep Pools
 - Cell 4 / 2 Lagoon Bunds
 - Ditches
- Cell 1 / Jubilee Marsh**
- Elevation (mODN) / Habitats**
- 1.65 to 0 Channels / Deep Pools
 - 0.01 to 0.9 Creek
 - 0.91 to 1.85 Mudflat
 - 1.86 to 2.25 Low Saltmarsh
 - 2.26 to 2.7 Middle Saltmarsh
 - 2.71 to 2.9 Upper Saltmarsh
 - 2.91 to 3.25 Transitional Marsh
 - 3.26 to 4.99 SLR Adaptation Zone
 - 5.0 to 8.0 Walls & Platforms
 - Shallow High-level Lagoons

Date	By	QA	Size
Oct17	SRA	DLW	A4
Coordinate System		British National Grid	
Projection		Transverse Mercator	
Scale at A4		1 : 21,000	
4479_Fig_WIWC_RestPlan_Oct17_A4			



© ABPmer, All rights reserved, 2017.
 Contains Ordnance Survey data © Crown copyright and database right (2017)

- Boundaries and Access**
- Wild Coast Cell Boundaries
 - Car Parks
 - Vehicle Access

Wallasea Island Wild Coast Restoration Plan





“...an unprecedented opportunity to create, the largest complex of shallow, periodically dried out and re-flooded, bird-rich saline lagoons in Northwest Europe. ”



This will provide a quality visitor experience - visitors could spend a whole day walking around, and still not have enough time to see all the birds!

New Home for Nature



New Colonists : Climate Change Adaptation



Kentish Plover



Black-winged stilt



Spoonbill

Not just birds



Planning for Future Visitor Access



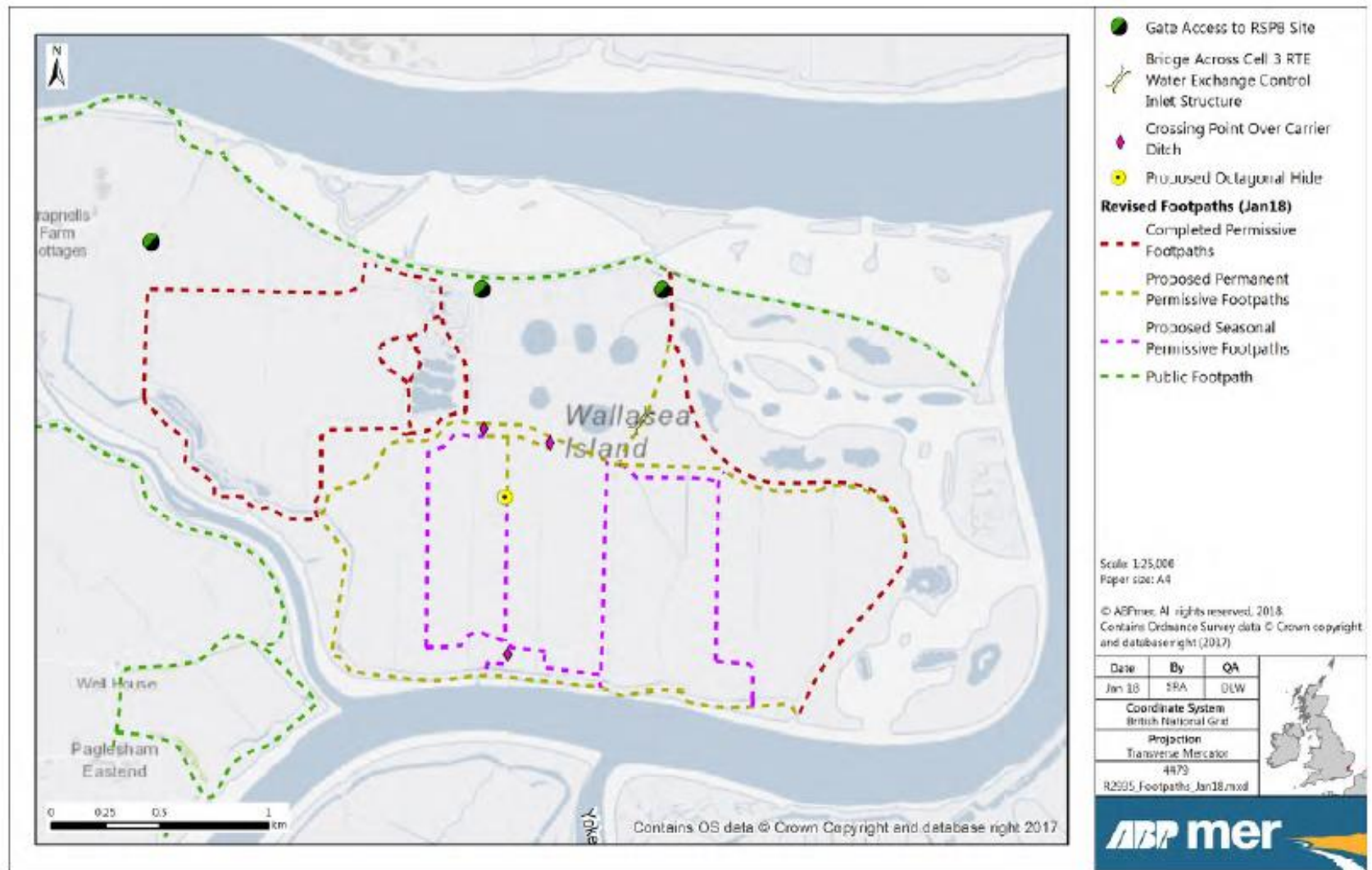
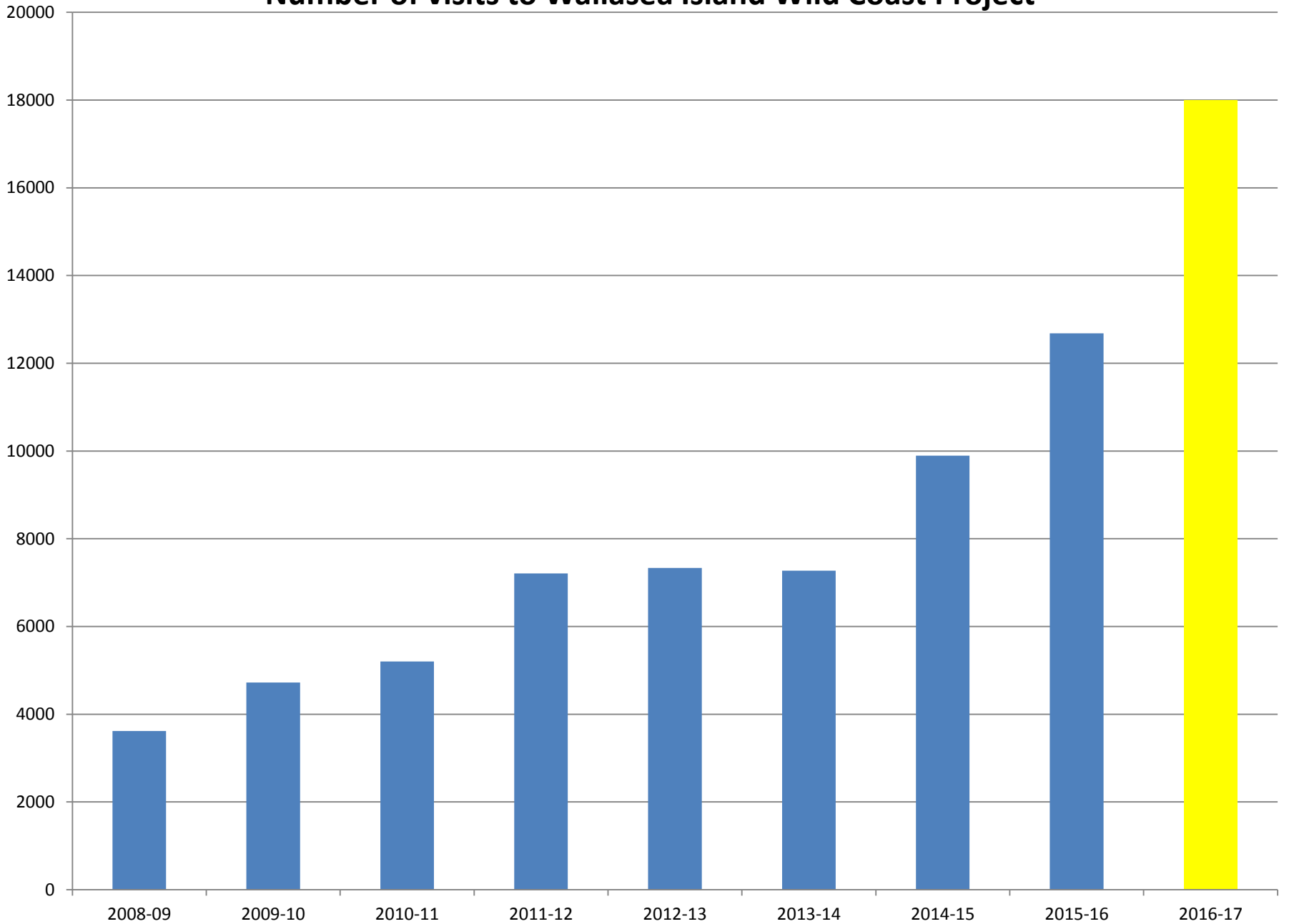
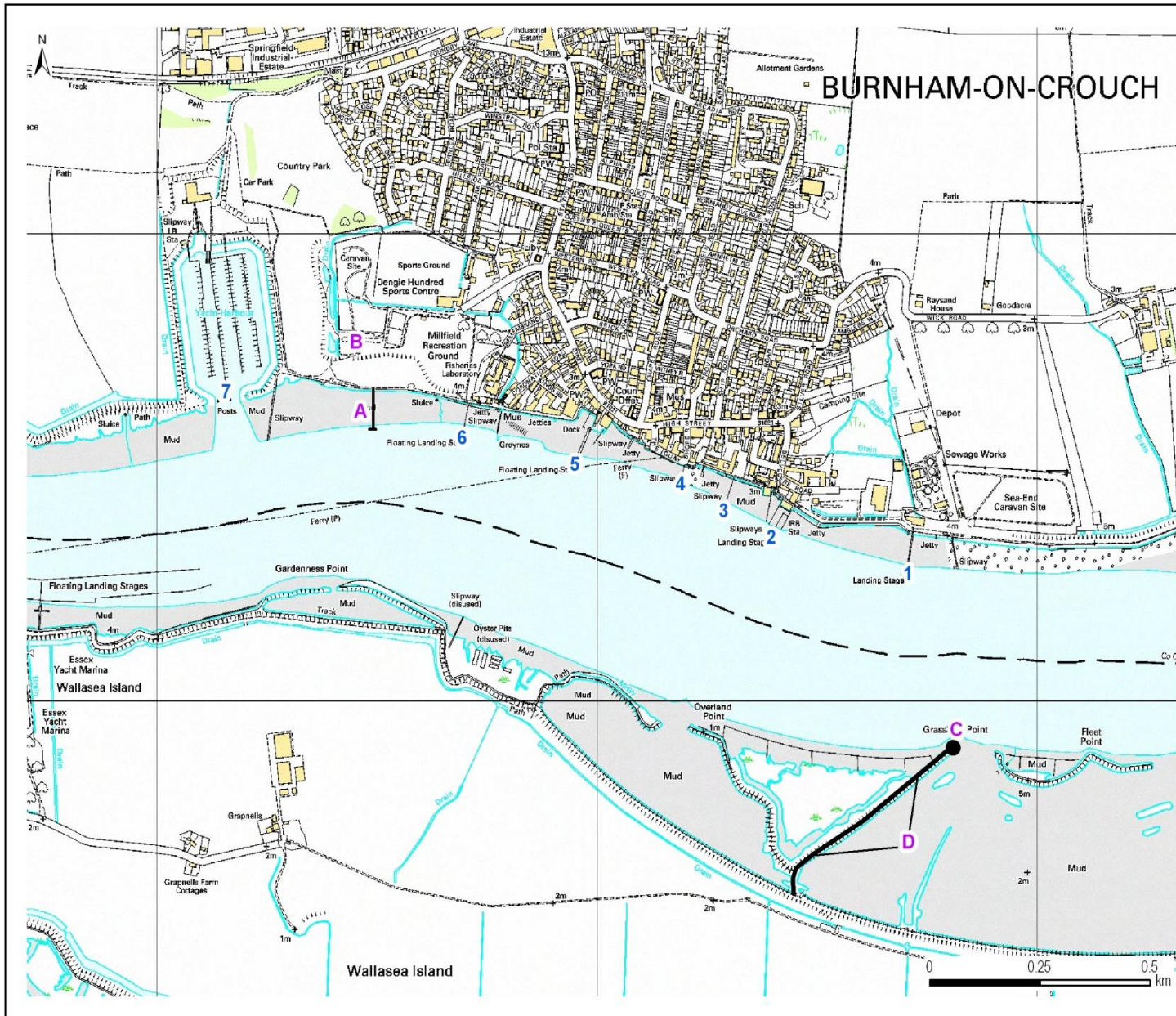


Figure 10. Proposed revised footpath network

Number of visits to Wallsea Island Wild Coast Project



New Access Possibilities



BURNHAM-ON-CROUCH

Seven existing pontoons

- 1 - Rice and Cole
- 2 - Royal Corinthian Yacht Club
- 3 - Royal Burnham Yacht Club
- 4 - Public Pontoon
- 5 - Priors Boat Yard
- 6 - Burnham Sailing Club
- 7 - Burnham Yacht Harbour

Other key locations

- A - Potential location for new pontoon
- B - Location of MDC owned car parking
- C - Proposed location of new jetty on Wallasea Island
- D - Route from new jetty to public footpath

Date	By	Size	Version
Jun 10	NMW	A4	1
Projection		OSGB 1936	
Scale		1:12,000	
QA		F/M	
3757- Burnham_Access.mxd			
Produced by ABPmer Ltd			



© ABPmer, All rights reserved, 2010
 © Crown copyright, All rights reserved. Licence 100031673
 NOT TO BE USED FOR NAVIGATION



River Access Feasibility Study

Figure 6A1

Sustainable Development Benefits

ECONOMIC GAIN

- ALLEVIATING THE RISKS OF A CATASTROPHIC FLOOD EVENT IMPACTING THE ISLAND AND ITS ENVIRONS
- CREATING SUSTAINABLE COASTAL DEFENCES THAT WILL RESPOND TO SEA-LEVEL RISE
- DEMONSTRATING AN INNOVATIVE PARTNERSHIP APPROACH TO WASTE MANAGEMENT

- CREATING LOCAL JOBS IN THE GREEN TOURISM SECTOR
- FACILITATING WIDER REGIONAL COAST PROTECTION BY PROVIDING OFFSETTING HABITATS

- ENHANCED VISUAL APPEARANCE OF A COASTAL LANDSCAPE
- IMPROVING ACCESS TO THE COAST INCLUDING EIGHT MILES OF FOOTPATHS
- PROVIDING AN ENVIRONMENT AND AMENITY FACILITIES THAT DELIVER SOCIAL AND HEALTH BENEFITS
- RECONNECTING AND ENGAGING PEOPLE IN THEIR COASTLINE
- INFORMING THE PUBLIC ABOUT CLIMATE CHANGE AND SEA-LEVEL RISE
- CREATING A FOCUS FOR LOCAL VOLUNTEERING AND CULTURAL EXCHANGE

SOCIAL VALUE

THE WALLASEA ISLAND WILD COAST PROJECT

- CREATING NEW HABITATS FOR FISH AND SHELLFISH
- PRODUCING HABITATS THAT WILL IMPROVE WATER QUALITY
- PROMOTING SEDIMENT ACCRETION WHICH WILL ACT TO TRAP CARBON
- PROVIDING A RECOVERY ALTERNATIVE TO LANDFILL DISPOSAL OF EXCAVATION MATERIALS

- PROVIDING NEW OPPORTUNITIES FOR BIRD WATCHING AND ANGLING
- CREATING A "LIVING LABORATORY" FOR FUTURE SCIENTIFIC RESEARCH
- INSPIRING DECISION MAKERS TO PLAN FOR CLIMATE CHANGE AND SEA-LEVEL RISE
- AVOIDING IMPACTS FROM ROAD TRANSPORT OF WASTE RECOVERY MATERIALS

- RESTORING HIGH BIODIVERSITY HABITATS THAT HAVE BEEN LOST THROUGH LAND-CLAIM AND EROSION
- CREATING INTERNATIONAL PROTECTED MUDFLATS AND MARSHES
- PROVIDING COASTAL FEEDING AND ROOSTING AREA FOR INTERNATIONALLY-IMPORTANT WATERFOWL POPULATIONS
- INCLUDING EXPANSES OF HIGH-ELEVATION LAND FOR NATIONALLY-IMPORTANT TERRESTRIAL SPECIES AND NESTING BIRDS
- ENSURE THAT SUSTAINABLE POPULATIONS OF PROTECTED TERRESTRIAL SPECIES ARE MAINTAINED

ENVIRONMENTAL BENEFIT

Summary

- Our objectives are about involving and engaging people through building upon and celebrating maritime, natural and coastal heritage.
- Creating a legacy: Wallasea Island has benefited from over £50m of investment and is sited at the confirmed final resting place of HMS Beagle.
- The 'Voyage' to legacy builds from celebration of the launch of HMS Beagle at a 200th Anniversary event in May 2020 on Wallasea Island through to enhanced visitor facilities and the maximisation of the associated maritime offer and influence.

Would you like to get involved with this exciting project?

If you, or anyone or organisation you know, may be able to support our plans as they are put in place through recognised sponsorship or similar please contact us at:

business@rochford.gov.uk