

Rochford District Community Safety Partnership

Annual Partnership Plan 2011/2012

September 2011

ROCHFORD DISTRICT

**Community Safety
Partnership**

Requesting this information in alternative formats

If you would like this information in large print, Braille or an alternative language, please phone 01702 318111.

Contents

	Page
1 Introduction	5
2 Rochford Now	6
3 Neighbourhood Meetings	7
Community Forums	8
4 Rochford Local Strategic Partnership (LSP).....	8
5 Partnership Structure	10
6 Roles of the Groups	11
7 2010/2011 Strategic Assessment Priorities	13
8 Priority achievements from 2010/2011	14
9 Strategic Priorities for 2011/2012	18
Sub Groups 2011/2012	19
10 Linked Plans and Strategies.....	19
11 Contacts	20
Appendix 1	21
Strategic Priority 1: Reduce Anti-Social Behaviour by 2% by 2012.....	21
Strategic Priority 2: Reduce Repeat Incidents of Domestic Abuse by 5% by 2012	23
Strategic Priority 3: Reduce the Number of Sexual Offences by 2% by March 2012	26
Strategic Priority 4: Increase the Reporting of Hate Related Incidents by 10% and Reduce the Number of Repeats by 10% by 2012	29

1 Introduction

Each Community Safety Partnership (CSP) under the Crime and Disorder Act 1998 has a statutory requirement to produce a Strategic Assessment and three year Partnership Plan (2008-2011), reviewed annually. The purpose of the partnership conducting a Strategic Assessment, which includes the analysis of crime and disorder, is to improve understanding of local problems and their potential causes and to respond more effectively to the communities we serve by setting clear and robust priorities.

The Strategic Assessment for 2011/2012 was completed in April 2011 and a new three year Partnership Plan (2011-2013) has been reviewed and amended to reflect changing priorities identified through the Strategic Assessment. An action plan is used to provide a general overview of performance against the agreed milestones/ outcomes with regular performance updates provided to the CSP.

This follows the Department for Communities and Local Government scrapping the Comprehensive Area Assessment and in October 2010 giving notice under Section 109 of the Local Government and Public Involvement in Health Act 2007 that all designations of local improvement targets in the Local Area Agreement be revoked. This meant that full control of all current Local Agreements were handed over to Local Authorities with the opportunity to amend or drop any targets as performance was no longer being monitored. There is also no requirement to produce a new agreement from April 2011. Equally, there will be no payments for Performance Reward Grant against the 2008-2011 targets. All of these factors will limit the resources and capacity of Rochford CSP to deliver on our priorities, however we will endeavour to continue to the best of our ability into 2012 and beyond and where possible seek other sources of funding for our partnership work to continue.

It was also announced that the National Indicator Set would be replaced with a single, comprehensive list of all the data local government will be expected to provide to central government. This list will include specific indicators relating to crime and disorder and should be available during 2011.

In the interim Rochford CSP have decided to set locally based targets against our agreed priorities and align some with the current Essex Police Strategic Assessment for the Rochford District 2011, as a measure of our performance. These specific targets are detailed in Appendix 1.

The CSP currently receives funding from Essex Probation, Basic Command Unit funding from Essex Police and part of an Area Based Grant received from the Home Office via Essex County Council, as Rochford is a two-tier authority. Each CSP received nominal funding from Essex County Council but this ceased on 31 March 2011 and the Basic Command Unit funding which supports posts and activities for the CSP will cease altogether on 31 March 2012. In addition, the Area Based Grant allocation for 2011/2012 has been reduced by 59% and from May 2012 it is proposed that newly created Police and Crime Commissioners will have control of all central government funding which normally goes to Community Safety Partnerships.

It is also proposed that Rochford and Castle Point's CSP Steering Groups will merge to form a joint CSP. A meeting took place in June to establish a small working group to implement the amalgamation and this will enable us to pool the limited resources and funding that are available across the two Districts.

2 Rochford Now

Rochford District* is situated in South East Essex within a peninsula between the River Thames and Crouch and with the North Sea to the East. The South of the District adjoins the urban areas of Southend on Sea and Castle Point. Much of the District's 65 square miles is designated as green belt and there are many miles of attractive coastline and nationally important areas of salt marsh.

The largest town, Rayleigh and the other two main settlements of Rochford and Hockley have good rail connections to London and there is access to the A127 London-Southend Arterial Road and then to the A13 and M25. London Southend Airport is primarily situated within the District and the airport and surrounding area are part of the Thames Gateway regeneration area.

In the 2001 census Rochford District had a population of approximately 79,000 people. The Office for National Statistics (ONS) 2008 mid year population estimate showed Rochford District as having a population of 83,200. In 2008, compared to the national average, Rochford District at 17.34% had fewer residents aged 0-14, at 11.48% fewer residents aged 15-24 at 25.00% fewer residents aged 25-44. Rochford District, at 27.39%, has more than the national average residents aged 45-64 and at 18.78% has a higher proportion of residents aged over 65. The population is among the older local populations in Britain and this is likely to increase with the over 65 population predicted to grow by 4.50% by 2020. There are some local variations in this pattern, with wards around Rochford town centre and to the North of the District recording older average ages than those along the west border.

The black and minority ethnic (BME) population is relatively dispersed amongst the urban settlements. The estimated population by broad ethnic group, 2008 was:-

Rochford
White % 95.74
Mixed % 1.10
Asian or Asian British % 1.46
Black or Black British %1.10
Chinese or Other % 0.61
Source: ONS

The Government's standard measure of deprivation and inequality in England is the Index of Multiple Deprivation (IMD). The IMD covers a number of aspects of deprivation including disadvantaged in education, income, employment, health and housing. The District is relatively affluent being 314th least deprived out of 354 Districts. The District has approximately 33,700 homes and one of the highest proportions of owner-occupation in the country at 86%. Social housing comprises approximately 8%.

* Extract from Rochford LSP's Sustainable Communities Strategy 2009-2021.

Rochford District is divided into six Neighbourhood Policing areas:-

Rayleigh (A320)	Rochford (A321)	Hockley (A322)	Hullbridge (A323)	Canewdon & Ashingdon (A324)	Wakering (A325)
Includes: Whitehouse Lodge Wheatley Grange Sweyne Park, Downhall & Rawreth, Trinity Rayleigh Central Wards	Includes: Hawkwell North, Hawkwell South, Rochford Wards	Includes: Hawkwell West, Hockley West, Hockley North, Hockley Central Wards	Includes: Hullbridge	Includes: South Fambridge, Great Stambridge, Paglesham Ballards Gore	Includes: Barling & Sutton, Foulness Great Wakering

There are two Police Stations in the District based in Rayleigh (24 hours) and Rochford (Mon-Fri 9-5pm, closed to the public at weekends).

Neighbourhood policing is about local policing; police, partners and the community working together, to identify and tackle issues of concern across the District and the rest of Essex. Neighbourhood policing is the creation of a team dedicated to each local area. These areas are small and typically will include an inspector, sergeant, police constable, police community support officer and special constables.

The Neighbourhood Policing Team (NPT) works with local partners and the community to keep Rochford District safe.

3 Neighbourhood Meetings

These are organised by the NPT's, with each area holding a regular Neighbourhood Action Panel meeting known as a NAP. The panel consists of people who live or work in the neighbourhood or those who provide a service to the local community. They provide input on the issues which matter to the community and these issues are taken to the NAP for them to consider. The NAP will agree community priorities and decide upon a realistic and achievable course of action so that the police can deliver results which matter to those in that community. Priorities are set by the community without influence from the police.

Forthcoming dates for NAP meetings can be found on the Essex Police website http://www.essex.police.uk/my_neighbourhood and then select Rochford District.

Community Forums

The Council has split the District into two areas covering:-

East Area	West Area
<p>Covering: Ashingdon Barling Magna Canewdon Great Wakering Hockley Hullbridge Paglesham Rochford Stambridge Sutton</p>	<p>Covering: Hawkwell Rawreth Rayleigh</p>

The Community Forums provide a facility for the public to ask questions direct of their elected representatives and of other partner organisations including Rochford District Community Safety Partnership. A feature of the forums is the opportunity to receive immediate answers from the attendees where possible.

Forthcoming dates for the Forums can be found on the Rochford District Council website www.rochford.gov.uk and then follow the link through Council Minutes, Agendas and Meetings.

4 Rochford Local Strategic Partnership (LSP)

The Local Strategic Partnership is a non statutory multi agency partnership which brings together, at a local level, the different parts of the private, public, community and voluntary sectors. The duty of the LSP is to prepare and implement a single co-ordinated framework of its long term vision for the area, as set out in the Sustainable Communities Strategy (SCS). The objective of the SCS is the improvement of the economic, social and environmental wellbeing of the local area, influencing the Local Development Framework.

The context for partnership working is rapidly changing. On 8 April 2011, the executives of both Castle Point and Rochford endorsed the development of a Joint Local Strategic Partnership (LSP) covering the Districts and a consolidation of the partnership structure under a Joint LSP which recognises and reflects that arrangement. The joint LSP has therefore effectively become the Responsible Authority Group (RAG) for the Community Safety Partnership and has responsibility to ratify the CSP Annual Partnership Plan and Strategic Assessment.

The Joint LSP is also responsible for driving activity and delivering services through its members and its thematic partnerships. Through consultation and engagement, they identify issues that are not currently being addressed by organisations and partners and discuss matters that need additional support and services. It provides the linkage between those who deliver services, primarily via the five partnerships that support the Joint LSP, and the authorities responsible for the funding streams.

Through this process the Joint LSP ensures funding is directed where it is most needed, fills any identified gaps and also reduces the opportunity for overlap and duplication in both funding and service delivery. The five thematic partnerships are:

- Community Safety Partnership
- SEE Local Children's Commissioning & Delivery Board
- Health & Wellbeing Partnership
- Community Development Partnership
- Employment, Skills and Business Partnership

One of the seven key areas identified by the Joint LSP is Keeping Rochford Safe. The objective is to ensure that our communities feel safe and that their fear of crime and their perception of crime decreases.

The latest Tracker 9 results (carried out May to July 2010) which is a residents' survey conducted by Essex County Council bi-annually showed a 9.9% perception of high levels of anti-social behaviour amongst Rochford District residents. This is good as it is set against a decreasing target of 12.1%, which means Rochford has the second lowest perception of ASB within the County. However we must not get complacent as the perception has risen slightly with a 1.1% increase on the previous year.

Using the same survey, 71.5 % of our residents feel safe after dark, again this is excellent as we have the third highest rate in the County, against a target of just 56.4% and even achieving a 4.5% increase on the previous year.

Rochford was successful in securing funding through Performance Reward Grant (PRG), in 2009/2011 for; a Sanctuary Scheme for Domestic Abuse, an RDC Domestic Abuse Reduction Officer to provide advice and support for victims, Internet Safety for schools and providing financial support to Neighbourhood Watch to recruit new members and increase the number of active co-ordinators. However, this money was revoked in mid 2010 leaving the Joint LSP with no funding and a need to identify how projects are taken forward. To enable projects to continue, advice and support were given to source alternative funding streams or amend the scope of the project to reflect their capacity to deliver.

5 Partnership Structure

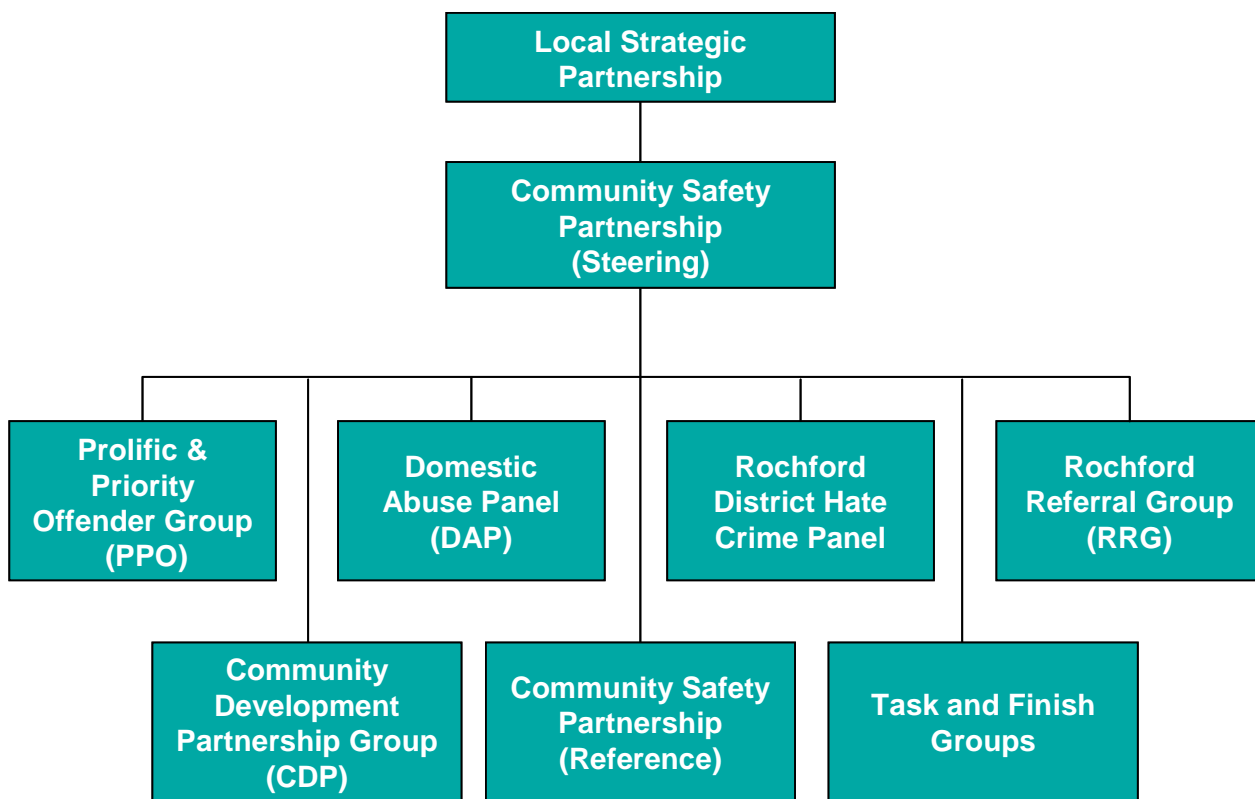
Partnership Strategic Vision

This Rochford Community Safety Partnership Annual Partnership Plan 2011/2012 has been produced with the following vision in mind:

“Working in partnership to make our District a place which provides opportunities for the best possible quality of life for all who live, work and visit here”

Partnership Structure:

The structure of the Rochford Community Safety Partnership (CSP), sub groups and its reporting line.



Rochford Community Safety Partnership has a small body of statutory members who are required under the Crime and Disorder Act 1998 to work in partnership to combat local crime and disorder. These key statutory partners are: Rochford District Council (RDC), Essex County Council, NHS South East Essex, Essex Police, Essex Police Authority, Essex County Fire and Rescue Service and Essex Probation.



These seven key statutory partners have a legal obligation to comply with the requirements which include the placing of the duty on the Steering Group to prepare the annual Strategic Assessment.

6 Roles of the Groups

Local Strategic Partnership

- Previously explained on page 7.

Community Safety Partnership Steering Group

- The Steering Group is the body that provides strategic leadership and overall management of the partnership. It is responsible for formulating the annual Strategic Assessment and Partnership Plan, managing the performance and finances of the Partnership and allocating funding to projects. The Steering Group meets bi-monthly and ensures that all day-to-day operational and performance functions of the CSP are effectively commissioned, delivered, evaluated and reviewed. It is proposed that it will report directly to the newly merged LSP Executive. The Chairman of the Community Safety Partnership is also the elected Member of the County Strategic Group – Safer Essex Partnership.

Community Safety Partnership Reference Group

- The Reference Group has representatives from each of the statutory partners (as detailed previously) together with members from non-statutory agencies and the voluntary sector.

Prolific and Priority Offender Group (PPO)

- The Government tasked all CSPs with progressing a national strategy to reduce crime by targeting prolific offenders. This has necessitated the formation of a group from both the CSP and criminal justice agencies to ensure that the three strands of the Strategy – Catch and Convict, Prevent and Deter and Rehabilitate and Resettle are progressed against timescales set by Central Government. The group is shared with Castle Point and is intended to manage those on the PPO programme with input from all agencies involved in the process.

Domestic Abuse Panel (DAP)

- This is a joint group with Castle Point and membership includes representatives from the Police, Social Services, Health, Local Authority Community Safety teams, Basildon Womens' Aid and the Voluntary Sector. It has lead responsibility for delivering the programme of work under each CSP Domestic Abuse primary objectives.

Rochford Referral Group (RRG)

- The Rochford Referral Group (RRG) is a new sub group of the Rochford District Community Safety Partnership. It has superseded the Joint Action Group (JAG) and incorporates some of the other work carried out by the JAG, the Rochford Substance Misuse Group (RSMG) and the Drug and Alcohol Reference Group (DARG). It is a multi agency working group and key partners include Registered Social Landlords (RSL's), Essex Police, Rochford District Council, Youth Offending Service, Essex Fire and Rescue Service and Open Road. The role of the group is to work collaboratively with individuals/families identified or referred by service providers as frequent service users with complex needs, those which are continuously involved with a number of different agencies on an ongoing basis, causing considerable strain on public resources and finances, whilst showing little or no signs of improvement in their lives.

Rochford District Hate Crime Panel

- This new group is being lead by Rochford District Council (RDC) and has been set up to address the priority of Hate Crime and Hate Incidents and to encourage the reporting of these. Membership includes RDC, Thames Corridor Focus Panel – Disability, Essex Police, Victim Support, Registered Social Landlords, CAB, Parish Councils and Faith Groups.

Community Development Partnership (CDP)

- The CDP, previously known as the Community Involvement Group, was formed centrally within RDC to address the priority of communication, consultation and public engagement with residents. This group includes representatives of RDC Communications Team, Rochford Community Safety Partnership, Neighbourhood Watch, Libraries, Schools, Childrens' services and Essex Police Media Officer and its role is to raise awareness and promote the work of the partnership through targeted campaigns, Citizens Panels and the media to improve two-way interaction with the community.

Task and Finish Groups

- Task and finish groups will be created to address emerging priorities outside of our identified ones for this coming year as and when they arise. These priorities will be identified across the District, through consultation at Neighbourhood Meetings and Community Forums as a public priority or will also be identified through an increase in reported crime of a particular crime type using crime statistics. Membership of this group includes RDC ASB Officer, Essex County Council, Essex Fire and Rescue Service, Essex Police and Registered Social Landlords, with the ability to call upon other partner agencies when a specific issue is identified requiring their assistance.

7 2010/2011 Strategic Assessment Priorities

The aim of the Strategic Assessment is to identify current patterns, trends, future gaps and risks that impact upon Rochford District and the community, linked to crime, anti-social behaviour, substance misuse, fear of crime and behaviour adversely affecting the environment.

A significant part of the Strategic Assessment is the development of a comprehensive analysis of community safety related issues and how these link to our partner agencies' most recent crime data, performance and service plans. The document is about future performance, in response to intelligence led information, analysis and data, that inform the seven statutory partners of the priorities and needs of the local community.

Ultimately, the aim of the Strategic Assessment is keeping Rochford safe, ensuring that our community feels safe and that their fear of crime and their perception of crime decreases.

The priorities identified from the 2010/2011 Strategic Assessment (year 3) were:-

- **Reduce Anti-Social Behaviour by 10% during 2010/2011**
- **Reduce Theft from Motor Vehicle by 10% during 2010/2011**
- **Reduce Robbery by 5% during 2010/2011**

- **Reduce the number of repeat incidents of domestic violence cases reviewed at MARAC (Multi Agency Risk Assessment Conference) and increase reporting rates of domestic abuse by 10%**
- **Reduce alcohol related disorder by 5% during 2010/2011 and increase baseline data on drug offences and service provision**
- **A task and finish group to tackle ASB driving, reduce speeding throughout the District and encourage safer parking especially around schools**

8 Priority achievements from 2010/2011

In its third year of the Strategic Assessment Rochford Community Safety Partnership achieved the following:

For general 'All Crime', the partnership achieved a reduction of 9.4% in the number of offences reported to the Police in 2010/2011 compared to the previous year. As at the end of the Financial Year 2010/2011, Rochford District has been placed 1st (lowest) out of both 15 Local Authorities in our 'Most Similar Group' (based upon a similar population and crime figures according to Home Office iQuanta) and within the County of Essex with 28.9 crimes per 1,000 residents, compared with the average MSG being 47.694 as at 31 March 2010.

Our work through the Public Reassurance group which developed into the broader membership of the CDP has as mentioned previously on page 12 greatly contributed to our success with perception of anti-social behaviour and feeling safe after dark in our District. The CSP profile has also risen within the community and our active participation with the CDP will continue the reassurance message.

Reduce anti-social behaviour by 10% during 2010/2011

The number of anti-social behaviour incidents reported to Police during 2009/2010 was 2120. During 2011/2012, 2090 incidents were reported to Police, a reduction of 1.0%. Clearly even though we had continued to reduce incidents we have not achieved our target, although when compared with the other 11 CSP's in Essex, Rochford CSP is ranked as having the 2nd lowest number of reported Police incidents per 1,000 population.

In 2010 the CSP noted a sharp rise in incidents reported from one area of the District and therefore to combat this, the partnership introduced a six month Dispersal Order for Rochford Town Centre and surrounding area, introduced on 1st December 2010 to tackle the ongoing issues in the area and so far has been particularly successful. For the period 1 December to 30 April 2011 there were 111 individuals dispersed and reported anti-social behaviour has been reduced by 49% with a reduction of 61% in reported youth nuisance calls. Crime has fallen by 59% for the same period with the biggest reduction of 75% in criminal damage to buildings other than dwellings. Approval was granted to allow the order to continue from 1 June 2011 for a further six months to cover the Summer period, when ASB generally rises.

Reduce Theft from Motor Vehicle (TFMV) by 10% during 2010/2011

In 2009/2010 there were 325 TFMV offences recorded and through partnership working this number has reduced by 39% to just 198 offences, almost four times the target of 10%. As at 31 March 2011 Rochford CSP was ranked 1st, having the lowest number of recorded offences per 1,000 population when compared with the other 11 Essex CSPs. The reduction was achieved through campaigns and media releases reminding motorists to lock their vehicles and not leave valuable items such as sat navs on display. The CSP also purchased car stickers which stated 'Don't bother this vehicle has been emptied of all valuable items and sat-nav equipment' and distributed these amongst the community at various public events.

Reduce Robbery by 5% during 2010/2011

In 2009/2010 there were 23 Robbery offences recorded and through partnership working this number has reduced by 65% to just eight offences. This is a significant achievement with Rochford CSP having the 3rd lowest number of recorded offences per 1,000 population in Essex.

Reduce the number of repeat incidents of domestic violence cases reviewed at MARAC (Multi Agency Risk Assessment Conference)

Unfortunately, Rochford data is grouped with Castle Point and Southend and therefore separate District data is not available for MARAC cases. However, looking at reducing the number of repeat incidents by 10% during 2010/2011, in 2009/2010 there were 279 repeat offences recorded and this number has reduced by 35.8% to 179 offences.

The Partnership is an active member of the CDP and supports their many events and activities to bring the community together, including Information Days held throughout the year across the District, see below table. It also regularly features in the widely read Rochford District Matters, the council's quarterly newspaper for residents, promoting positive messages about the Partnership's work, keeping people informed of the projects and initiatives it has funded and their progress and impact. The newspaper has also proved useful in alerting residents to scams and fraudulent misrepresentation.

In February 2010 and again in April 2011, the partnership held a Citizens Panel to seek the views of a small group of local residents on their perceptions of crime and anti-social behaviour across the District. These findings will be addressed through the Steering who will direct specific issues to the relevant sub-group.

Detailed below are the Community Safety Partnerships achievements against the 2010/2011 targets:

Achievements from Strategic Priorities 2010/2011

2010/2011 Priority	Year to Date (April 09- March 10)	Year to Date (April 10- March 11)	% 2009/2010 to 2010/2011	Performance Indicator
Reduce Theft From Motor Vehicle by 10% during 2010/2011	325	198	39.0% (127 offences)	Green
Reduce Robbery by 5% during 2010/2011	23	8	65.0% (15 offences)	Green
Reduce Anti-Social Behaviour incidents by 5% during 2010/2011	2120	2090	1.0% (30 incidents)	Amber
Increase the reporting rates of domestic abuse by 10% during 2010/2011	626	388	38.0% (238 incidents)	Red
2009/2010 Priority	Achievements			Performance Indicator
Reduce the repeat victims of Domestic Violence cases reviewed at the Multi Agency Risk Assessment Conference	Rochford District is grouped with Southend and Castle Point. Separate District data not available			
Reduce the number of repeat incidents by 10% during 2010/2011	279	179	35.8% (100 incidents)	Green
Reduce alcohol related disorder by 5% during 2010/2011 (Assault with less serious injury NI 20)	181	186	2.8% (5 offences)	Red
All Crime	2650	2401	9.4% (249 offences)	Green

2010/2011 Priority	Year to Date (April 09- March 10)	Year to Date (April 10- March 11)	% 2009/2010 to 2010/2011	Performance Indicator
Improve public engagement and increase public reassurance	<p>Joint Essex Police Authority and Rochford CSP Public Meeting 17 November 2010 in Hockley.</p> <p>2nd Citizens Panel held April 2011.</p> <p>Supported the Community Involvement Group (CIG) Information Days in Rochford, Great Wakering and Hullbridge.</p> <p>Regular positive features in Rochford District Matters (RDM).</p> <p>Regular press releases on the work of the CSP, community safety advice and alerts to residents of new scams and activities of fraudsters.</p>			Green

Although the CSP has achieved a great deal we do note the following:-

Reduce alcohol related disorder by 5% during 2010/2011 and increase baseline data on drug offences and service provision

There was an increase in five offences, which equates to 2.8%. The CSP has recognised that alcohol related disorder still needs to be addressed and is working in partnership with Police Licensing Officers and ECC Trading Standards to implement Challenge 25. This work will also link in with the CSP priority to reduce the number of sexual offences by 2% during 2011/2012.

Increase reporting rates of Domestic Abuse by 10%

The number reported was down by 38%. Although Rochford CSP encourages victims to report Domestic Abuse, CSPs across Essex saw an overall reduction in incidents of Domestic Violence during 2010/2011. Rochford CSP had the biggest reduction for 2010/2011, ranking it 1st out of the 12 Essex CSPs which is an encouraging achievement. This may be attributable to the work of the RDC Domestic Abuse Reduction Officer who was employed in May 2010 from the Performance Reward Grant and Area Based Grant funding to support and develop a coordinated approach to Domestic Abuse service provision by facilitating the multi-agency, cross sector work within the Rochford District.

A task and finish group to tackle ASB driving, reduce speeding throughout the District and encourage safer parking especially around schools

Safer Parking around Schools campaigns did take place at numerous areas around the District and were successful, however they were not sustainable due to vast restructures taking place both within Essex County Council and Essex County Fire and Rescue Service, resulting in key personnel and partner resources no longer being available to continue them. Again with changes within Essex Police and staff shortages within the Neighbourhood Policing Team, the Speedwatch Campaigns were unable to be fully rolled out across the District.

9 Strategic Priorities for 2011/2012

This process has identified four key priorities which Rochford Community Safety Partnership will focus on over the next 12 months (April 2011 – March 2012)

- Reduce anti-social behaviour by 2% during 2011/2012.
- Reduce the number of repeat incidents of domestic abuse by 5% during 2011/2012.
- Reduce the number of sexual offences by 2% during 2011/2012.
- Increase the reporting of hate related incidents by 10% and reduce the number of repeats by 10% by 2012.

Although increasing public engagement and public reassurance is not listed as a priority for the partnership for 2011/2012, this work will continue through the established CDP.

From 01 April 2010 statutory changes to Community Safety Partnerships (CSPs) in England implemented under the Policing and Crime Act 2009 came into effect. Under these changes the Probation Service became a responsible authority of CSPs, having previously been a cooperating body, and the existing duties of CSPs expanded to include a new duty to formulate and implement a strategy to reduce reoffending by adult and young offenders. In addition the remit of bodies listed under Section 17 of the Crime and Disorder Act 1998 (with existing duty to consider crime and disorder reduction when exercising their functions) has been extended to include reducing reoffending.

In addition it is a requirement that from April 2010 all Community Safety Partnerships are responsible for Integrated Offender Management (IOM). The aim of IOM is to help local partners jointly reduce crime and re-offending and improve public confidence in the Criminal Justice System (CJS) by working in partnership to target offenders who cause the greatest harm to their communities. These offenders may not be under statutory probation supervision but are known to be actively offending or at high risk of doing so. The PPO Link Worker will be identifying offenders that don't score highly enough to be a PPO but can be incorporated into IOM. Action Plan includes identifying perpetrators through ASB and DA to also bring them into the IOM process.

Central government through their approach to tackling Violence against Women and Girls (VAWG) made Domestic Homestic Reviews ((DHRs) Section 9 Domestic Violence, Crime and Victims Act 2004) a statutory requirement for CSPs to initiate and undertake as of 13 April 2011. The process being that the relevant police force will advise in writing the relevant CSP when a DA-related homicide has occurred. The CSP chair will then decide whether to undertake a DHR and their decision must be shared with the Home Office. If a DHR proceeds the Chair will form a review panel and provide a report that highlights important lessons to be learned for inter-agency working to safeguard victims in the future.

Sub Groups 2011/2012

One of the priorities identified in the Strategic Assessment will be addressed by the existing sub group:

Domestic Abuse Panel (DAP) for the victims and perpetrators of domestic abuse.

There are also two new sub groups, to deliver on a further two priorities; Rochford Referral Group will replace the previous JAG (Joint Action Group) to fall in line with our new statutory requirements and continue to monitor anti-social behaviour issues and develop problem solving initiatives and a Rochford District Hate Crime Panel.

Essex Police, Trading Standards, RDC, Licensing Officers will liaise regularly rather than develop a formal sub-group, due to the restriction in resources and funding to tackle the remaining priority for reducing Sexual Offences, which is predominately related to the night-time economy in Rayleigh, although still relatively small compared to other crime types and other CSP areas.

Each of the sub groups have been allocated funding to address these priorities and help achieve the aims and objectives outlined in their action plans. (Appendix 1).

Performance against the baseline for each of the priorities will be monitored on a monthly basis by the Chairs of these sub groups or Community Safety Team where a sub-group does not exist, recorded on a CSP Highlight Report form and reported quarterly to the CSP Steering Group.

The Prolific and Priority Offenders (PPO) Group will continue to deliver on their identified priorities as outlined in their action plans.

10 Linked Plans and Strategies

This Annual Partnership Plan for 2011/2012 sets out the key Strategic Priority areas for the CSP and it is recognised that these priorities are not delivered entirely by the Partnership and that other plans and strategies contribute such as Rochford Sustainable Community Strategy 2009-2021 (see page 7)

The Sustainable Community Strategy document gives all organisations a clear focus on the key priorities to be tackled within the Rochford District.

Other Strategic Partnerships with links to the CSP

- SEE Local Children's Commissioning and Delivery Board (SEELCCDB)
- Castle Point and Rochford Health and Wellbeing Partnership (HWP)
- Essex Drug and Alcohol Action Team (DAAT)
- Essex Safeguarding Children Board
- Safer Essex

Other Plans

There are a number of other plans produced by local partners which are aimed at addressing particular aspects of this Partnership Plan.

These include:-

- Policing Plan 2011/2012
- Essex Police Authority & Essex Police Strategy 2010-2013
- Essex County Fire and Rescue Service Strategy (Southend and Rochford Community Command Plan)
- Essex Road Safety Strategy
- Children and Young People's Plan 2009-2011
- Safeguarding Children and the Vulnerable
- NHS South East Essex Rochford Joint Strategic Needs Assessment (JSNA)
- Essex Strategy 2008-2018

11 Contacts

If you would like to know more about Rochford District Community Safety Partnership please contact us using one of the following:-

Rochford District Council Community Safety Team

Telephone: 01702 318104

Email: communitysafety@rochford.gov.uk

Website: [www.rochford.gov.uk/council&democracy/partnerships/rochford\(CSP\)](http://www.rochford.gov.uk/council&democracy/partnerships/rochford(CSP))

Appendix 1

Strategic Priority 1: Reduce Anti-Social Behaviour by 2% by 2012

Performance Indicator	2% reduction in ASB incidents by March 2012						
Baseline	ASB incidents (Police STORM Database) 2010/2011 (2090) RDC ASB Databases 2010/2011						
Target:	2% reduction by March 2012 (2048)	Q1		Q2		Q3	Q4
CSP Lead:	Vacant – ASB Officer RDC Melanie Yolland – Community Safety Coordinator RDC		CSP Resources:	5K CSP Allocation 10K CSP Problem Solving			
Key Milestones		Outcomes and Outputs					
Recruit RDC anti-social behaviour officer	A	Officer recruited, in place and work plan agreed by October 2011.					A
Partner agencies to identify young people at risk of offending Engage with County Youth Offending Service, Family Mosaic and Extended Schools.	A	Attendance and participation by partner agencies at meetings including Rochford Referral Group. Number of young people identified and engaging with service providers. Support and encourage targeted intervention work with both the young person and parent(s). Reduction in number of ASB incidents and Criminal Damage offences.					A
Produce ASB response plan to peak times/hotspots for anti-social behaviour for District – Summer Holidays – Halloween – Nov 5 th – Christmas.	A	Ensure there are appropriate diversionary/campaign activities available at identified times. Reduction in number of Rowdy/Nuisance Behaviour incidents reported to Police and Community Safety Team by March 2012.					A
Increased joint working with Police on Operations and initiatives to tackle ASB hotspots and seasonal trends (parks/mini motos).	A	Targeted multi-agency approach to tackling the issues, relaying positive messages via the local media. Reduction in ASB incidents and Criminal Damage offences by March 2012.					A
Monitor and evaluate effectiveness of Dispersal Orders across Rochford District	A	Reduction in reports of ASB and crime from local residents and businesses. Reduction in anti-social behaviour incidents in the dispersal zone and reduction in crime in the dispersal zone, relaying positive messages via the local media. Use of future Dispersal Orders in other areas of the District.					A

Performance Indicator	2% reduction in ASB incidents by March 2012						
Baseline	ASB incidents (Police STORM Database) 2010/2011 (2090) RDC ASB Databases 2010/2011						
Target:	2% reduction by March 2012 (2048)	Q1		Q2		Q3	Q4
CSP Lead:	Vacant – ASB Officer RDC Melanie Yolland – Community Safety Coordinator RDC			CSP Resources:	5K CSP Allocation 10K CSP Problem Solving		
Key Milestones				Outcomes and Outputs			
Recommend retailers across Rochford District adopt Challenge 25 scheme.		A	ECC Trading Standards contact retailers selling age restricted goods across the District by December 2011. Number of retailers signed up to scheme by March 2012. Fines/fixed penalty notice and risk of license review for retailers. Reduction in the sale of age restricted products to underage people. Reduction in number of ASB incidents and criminal offences. Key individuals identified for PPO scheme or Integrated Offender Management cohort.			A	
Provide Anti-social awareness training in schools across the District		A	Schools approached by October 2011. Training dates and method of delivery agreed by November 2011. Training commences December 2011.			A	
Refer and record individual(s) and/or families engaging in anti-social behaviour to the Rochford Referral Group (RRG).		A	Targeted multi agency approach to tackling the issues. Reduction in number of ASB complaints to the area. Key individuals identified for PPO scheme or Integrated Offender Management cohort.			A	
Progress Comments:							
Key Risks to Achieving:	Unable/delay in recruiting RDC ASB officer Delay in engaging and/or being unsuccessful at engaging with the agencies to identify young people at risk Partner agencies not engaging on RRG Schools not engaging/resistance to ASB training						
Key Actions to Mitigate Risk:							

Strategic Priority 2: Reduce Repeat Incidents of Domestic Abuse by 5% by 2012

Performance Indicators	5% reduction in number of repeat incidents by March 2012						
Baseline	Repeat incidents of Domestic Violence (Police Crime Data) 2010/2011 (179)						
	Number of families supported by Basildon Women's Aid 2010/2011 (38)						
Target:	5% reduction in the number of repeat incidents reported by March 2012 (170)	Q1		Q2		Q3	Q4
	Increase in number supported by Basildon Women's Aid						
	Number supported by Safer Places (Southend)						
CSP Lead:	Tracey Schneider RDC Domestic Abuse Reduction Officer and Chair of DAP. Melanie Yolland RDC Community Safety Coordinator			CSP Resources:	5K CSP allocation 5K Sanctuary Scheme 5K for BWA and Safer Places 2K for Basildon Careline Service 3k for Domestic Homicide Review (DHR)		
Key Milestones				Outcomes and Outputs			
Administer the Freedom Programme across the District. (Provides victims with support and enables them to gain self esteem).		A	Officer trained to be a facilitator by April 2011. Referral sources identified and contacted by May 2011. Referral process in place by May 2011. Leaflet produced and disseminated across the District to signpost training by May 2011. First session delivered by June 2011. Training rolled out across the District throughout the year.				A
J9 initiative (To mobilise communities to take responsibility and challenge Violence Against Women and Girls) by awareness raising, information points and signposting).		A	Literature produced and disseminated at first phase of group training sessions targeted at schools, children's centres, housing teams and libraries by June 2011. Second phase of group training sessions as above and to include local businesses by July 2011.				A
Provide Domestic Abuse awareness training to RDC staff, Registered Social Landlords (RSL's) and key agencies.		A	Member training by April 2011. E-learning package identified and installed by August 2011. Training rolled out across the Authority in line with Home Office Violence Against Women and Girls strategy and ECC training guidance by March 2012. Greater awareness and understanding of Domestic Homicide Reviews (DHR) and participation in the DHR at the request of the Review Panel.				A
Establish Domestic Abuse campaigns within the District to raise awareness.		A	In line with work of the Domestic Abuse Panel and other panels across Essex by March 2012. Run targeted campaign for National Domestic Violence Week by November 2011.				A

Performance Indicators	5% reduction in number of repeat incidents by March 2012						
Baseline	Repeat incidents of Domestic Violence (Police Crime Data) 2010/2011 (179)						
	Number of families supported by Basildon Women's Aid 2010/2011 (38)						
Target:	5% reduction in the number of repeat incidents reported by March 2012 (170)	Q1		Q2		Q3	Q4
	Increase in number supported by Basildon Women's Aid						
	Number supported by Safer Places (Southend)						
CSP Lead:	Tracey Schneider RDC Domestic Abuse Reduction Officer and Chair of DAP. Melanie Yolland RDC Community Safety Coordinator		CSP Resources:	5K CSP allocation 5K Sanctuary Scheme 5K for BWA and Safer Places 2K for Basildon Careline Service 3k for Domestic Homicide Review (DHR)			
Key Milestones			Outcomes and Outputs				
Provide Domestic Abuse awareness training in schools across the District.	A		Schools approached by July 2011 for new school year starting Sept 2011. Training dates and method of delivery agreed with each school by Oct 2011. Awareness raising, early intervention and prevention in line with Home Office Violence Against Women and Girls Strategy Action Plan items 2 and 3.				A
Continue to support the work of Basildon Women's Aid and Safer Places.	A		Protocols and guidance produced by July 2011 Process for payment, monitoring and evaluation by July 2011. Referrals from BWA and Safer Places to attend Freedom Programme. Organisations support for Freedom Programme and J9 initiative. Increase in number of individuals/families receiving outreach by March 2012. Outreach support funding allocation spent by March 2012.				A
Establish use of Careline Service across the District	A		Record number of Careline units still in use across the District by May 2011 Arrange collection/write off of unused Careline units by May 2011. Produce protocol and guidance regarding use of Careline units with new provider by May 2011. Secure future funding for Careline by March 2012.				A
Identify and refer known perpetrators of Domestic Abuse or Violence to perpetrator programmes and support services.	A		Provision of a perpetrator version of the programme to be developed and rolled out by December 2011. Key individuals identified for PPO scheme or Integrated Offender Management cohort.				A
Provide clear and readily available personal safety advice for women.	A		Produce a pocket guide covering personal safety, alcohol awareness and travelling home after a night out by September 2011.				A

Performance Indicators	5% reduction in number of repeat incidents by March 2012						
Baseline	Repeat incidents of Domestic Violence (Police Crime Data) 2010/2011 (179)						
	Number of families supported by Basildon Women's Aid 2010/2011 (38)						
Target:	5% reduction in the number of repeat incidents reported by March 2012 (170)	Q1		Q2		Q3	Q4
	Increase in number supported by Basildon Women's Aid						
	Number supported by Safer Places (Southend)						
CSP Lead:	Tracey Schneider RDC Domestic Abuse Reduction Officer and Chair of DAP. Melanie Yolland RDC Community Safety Coordinator	CSP Resources:	5K CSP allocation 5K Sanctuary Scheme 5K for BWA and Safer Places 2K for Basildon Careline Service 3k for Domestic Homicide Review (DHR)				
Key Milestones	Outcomes and Outputs						
Continue to support the Rochford District Sanctuary Scheme	A	Secure and monitor new contract with Safe Partnership by April 2011. Produce and disseminate new Sanctuary Scheme procedure and referral information by July 2011. Secure future funding for Sanctuary Schemes by March 2012.					A
Progress/Comments:	Domestic Abuse Reduction Officer post is a fixed term contract until May 2012. Prepare report by December 2011 to Executive around value and continuation of post.						
Key Risks to Achieving:	Schools not engaging/resistance to awareness training. Identifying future funding schemes for Sanctuary and Careline. Allocated funding for outreach work exceeds 5K.						
Key Actions to Mitigate Risk:	Domestic Abuse Reduction Officer can manage some of the issues.						

Strategic Priority 3: Reduce the Number of Sexual Offences by 2% by March 2012

Performance Indicators	2% reduction in sexual offences by March 2012						
Baseline	Number of sexual offences (Police crime data/iQuanta data) 2010/2011 (38) ECC Test purchasing for alcohol sales for Rochford 2010/2011 (5)						
Target:	2% reduction in sexual offences by March 2012	Q1		Q2		Q3	Q4
	Increase baseline data on ECC test purchasing for alcohol sales across the Rochford District						
CSP Lead:	Chief Inspector Glen Westley, Essex Police Danny Barnes, Essex Police Licensing Officer/ Steve Joynes Acting Sergeant Essex Police. Peter Stratton/Lynsey Yarnell ECC Trading Standards		CSP Resources:	5K CSP Allocation 3K for Challenge 25 for 2011/2012			
Key Milestones		Outcomes and Outputs					
Recommend licensed premises in Rayleigh (Night Time Economy) to adopt Challenge 25 scheme.		A	Identify Night Time Economy footprint by May 2011. Identify licensed premises in High Street and surrounding area by May 2011. Approach licensees by June 2011. Arrange meeting with licensed premises in High Street and surrounding area by July 2011. Number of licensees signed up to scheme by March 2012. Reduction in the sale of age restricted products to underage people. Fines/fix penalty notice and risk of license review for retailers. Key individuals identified for PPO scheme or Integrated Offender Management cohort.				A
Adopt Pub Watch Scheme		A	Rayleigh Licensed premises sign up to pub watch scheme (NTE) by September 2011. Number of licensed premises across the District signed up to Pub Watch by March 2012. Reduction in number of crimes and anti-social behaviour incidents.				A
Use of knife arches at public houses and clubs.		A	Detect and deter the number of people carrying weapons. Reduction in the number of violent offences.				A

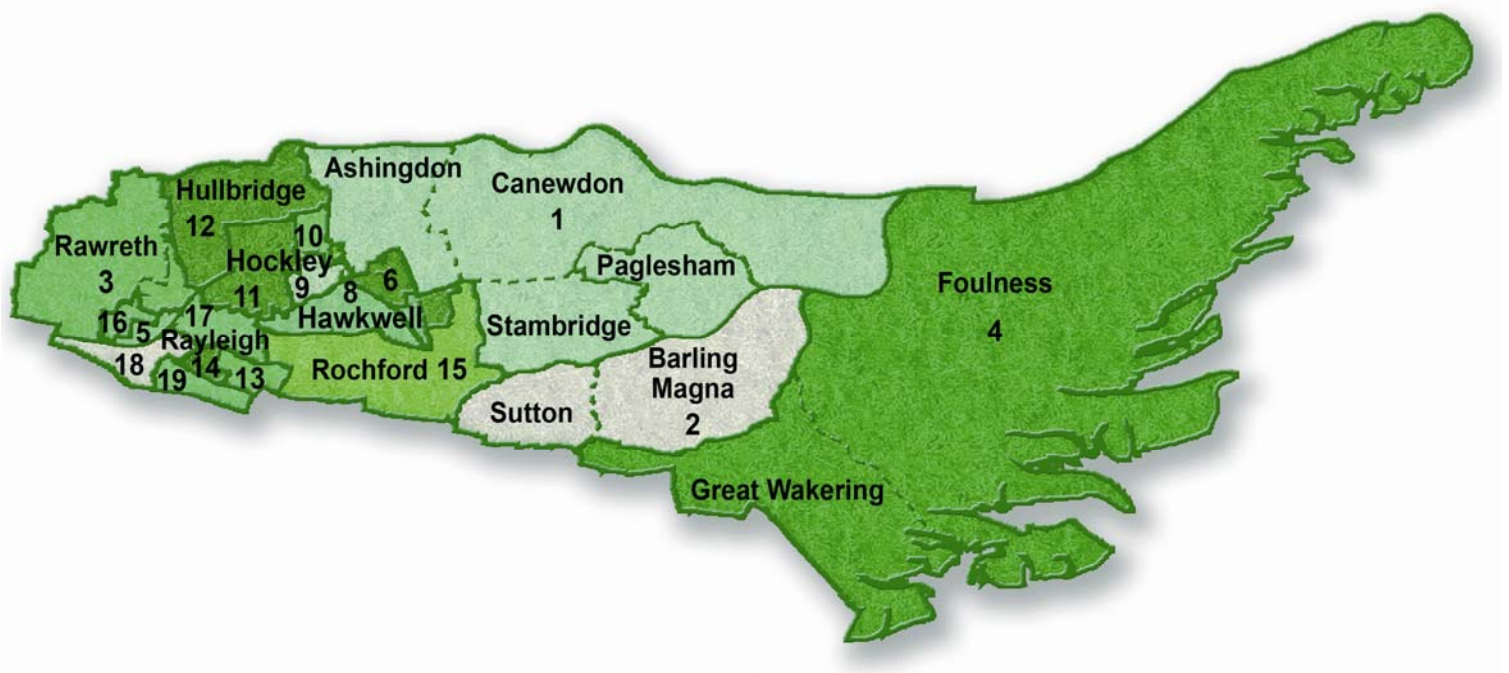
Performance Indicators	2% reduction in sexual offences by March 2012						
Baseline	Number of sexual offences (Police crime data/iQuanta data) 2010/2011 (38)						
	ECC Test purchasing for alcohol sales for Rochford 2010/2011 (5)						
Target:	2% reduction in sexual offences by March 2012	Q1		Q2		Q3	Q4
	Increase baseline data on ECC test purchasing for alcohol sales across the Rochford District						
CSP Lead:	Chief Inspector Glen Westley, Essex Police Danny Barnes, Essex Police Licensing Officer/ Steve Joynes Acting Sergeant Essex Police. Peter Stratton/Lynsey Yarnell ECC Trading Standards			CSP Resources:	5K CSP Allocation 3K for Challenge 25 for 2011/2012		
Key Milestones		Outcomes and Outputs					
Improve intelligence from all agencies to ECC Trading Standards on underage sales.	A	Increase in number of test purchases across the District to premises suspected of selling to underage by March 2012. Increase in number of license reviews. Contact RDC Street Scene regarding recording types of and location of drug paraphernalia throughout the District. Refer information to Essex Drug and Alcohol Action Team (EDAAT) for future strategies.					A
Improve intelligence from all agencies and the public to Police around drugs and drug paraphernalia.							
Establish baseline target on drugs and alcohol across the District.							
Provide clear and readily available personal safety advice for women.	A	Produce a pocket guide covering personal safety, alcohol awareness and travelling home after a night out by September 2011. Distribute pocket guide to premises across the District by August 2011. Reduction in the number of sexual offences by March 2012.					A
Aim to identify Help Points in appropriate premises in Rayleigh.							
Promote Healthy Relationships and Personal Safety in schools across the District.	A	Contact 4 schools in District by September 2011. Training rolled out throughout year. Reduction in number of young people becoming a victim or repeat victim of crime. Contact Leisure Centres in District by September 2011 Training rolled out throughout year.					A
Promote Healthy Relationships in Leisure Centres across the District,							
Fund Outreach Workers to engage with young people in Rayleigh High Street (NTE) area.	A	Awareness and understanding of personal safety. Reduction in number of young people becoming a victim or repeat victim of crime.					A
Progress/Comments:							
Key Risks to Achieving:	Licensees not engaging with schemes Schools not engaging. Young people not engaging.						

Performance Indicators	2% reduction in sexual offences by March 2012								
Baseline	Number of sexual offences (Police crime data/iQuanta data) 2010/2011 (38)								
	ECC Test purchasing for alcohol sales for Rochford 2010/2011 (5)								
Target:	2% reduction in sexual offences by March 2012	Q1		Q2		Q3		Q4	
	Increase baseline data on ECC test purchasing for alcohol sales across the Rochford District								
CSP Lead:	Chief Inspector Glen Westley, Essex Police Danny Barnes, Essex Police Licensing Officer/ Steve Joynes Acting Sergeant Essex Police. Peter Stratton/Lynsey Yarnell ECC Trading Standards			CSP Resources:	5K CSP Allocation 3K for Challenge 25 for 2011/2012				
Key Milestones				Outcomes and Outputs					
Key Actions to Mitigate Risk:									

Strategic Priority 4: Increase the Reporting of Hate Related Incidents by 10% and Reduce the Number of Repeats by 10% by 2012

Performance Indicators	10% Increase in reported hate related incidents by March 2012 10% reduction in number of repeats by March 2012								
Baseline	Number of Racial Incidents (Police Crime data/iQuanta data) 2010/2011 (14)								
Target:	10% Increase in reported hate crime incidents by March 2012 (15)	Q1		Q2		Q3		Q4	
	10% reduction in number of repeats by March 2012								
CSP Lead:	Paul Beckers – Thames Corridor Focus Group – Disability Chief Inspector Glen Westley – Essex Police Paula Chapman – RDC Asst Community Safety Officer			CSP Resources:	5K CSP Allocation				
Key Milestones			Outcomes and Outputs						
Establish a Rochford Hate Crime panel.			A	Group established, terms of reference, Chair and Vice-Chair elected, meeting held by May 2011.					A
Produce a reporting form to enable residents to report hate related incidents.			A	Content agreed by June 2011. Form produced and distributed to agencies/organisations (hard copy) across the District by June 2011. Hate crime page and online reporting form added to CSP web pages by June 2011. Increase in number of reported incidents by March 2012. Reduction in number of repeats by March 2012. Number of hits on Hate crime webpage by March 2012. Number of completed online reporting forms by March 2012. District hate related incidents baseline data available for future strategic assessments.					A
Provide clear and readily available advice and information for those suffering hate related incidents across the District in conjunction with the Hate Crime Panel.			A	Awareness and greater understanding of what constitutes a hate related incident. Literature produced to signpost to support services and disseminated to agencies/organisations by June 2011. Increase in the number of hate related incidents reported to Police by March 2012. Identify number of hate related incidents reported to other agencies other than Police by March 2012.					A
Work with Hate Crime Panel with coordinating and producing campaigns.			A	2 local media campaigns to take place by March 2012.					A
Provide hate related incident awareness training to frontline staff in RDC, RSL's and key agencies			A	Identify key frontline staff by May 2011. Cost scheme for those identified by May 2011. Funding scheme agreed by May 2011. Training rollout throughout year. Greater awareness and understanding within agencies and ability to signpost to appropriate services i.e. victim support. Direct advice to prevent them becoming a repeat victim. Reduction in the number of repeat victims of hate related incidents.					A

Performance Indicators	10% Increase in reported hate related incidents by March 2012 10% reduction in number of repeats by March 2012						
Baseline	Number of Racial Incidents (Police Crime data/iQuanta data) 2010/2011 (14)						
Target:	10% Increase in reported hate crime incidents by March 2012 (15)	Q1		Q2		Q3	
	10% reduction in number of repeats by March 2012					Q4	
CSP Lead:	Paul Beckers – Thames Corridor Focus Group – Disability Chief Inspector Glen Westley – Essex Police Paula Chapman – RDC Asst Community Safety Officer		CSP Resources:	5K CSP Allocation			
Key Milestones			Outcomes and Outputs				
Provide Hate Crime awareness training in schools across the District.			A	Schools approached by July 2011. Cost scheme for Victim Support to deliver training by August 2011. Funding scheme agreed by August 2011. Training rollout throughout the year. Reduction in hate related graffiti/criminal damage. Reduction in number of repeats by March 2012,			A
Progress/Comments:							
Key Risks to Achieving:	Schools not agreeing to Hate Crime awareness training. Capacity of Victim Support to deliver training. Partner agencies not delivering agreed actions within agreed timescales.						
Key Actions to Mitigate Risk:							



Report Compiled by

Rochford District CSP Steering Group and Rochford District Council Community Safety Team

Contact: Melanie Yolland, Community Safety Co-ordinator
Rochford District Council, South Street, Rochford Essex SS4 1BW
Tel: 01702 318104

Email: melanie.yolland@rochford.gov.uk

Produced by the
Rochford District Community Safety Partnership



Rochford District Council
Council Offices South Street
Rochford Essex SS4 1BW
Phone: 01702 546366
customerservices@rochford.gov.uk
Website: www.rochford.gov.uk



**INVESTORS
IN PEOPLE**

Gold