

# *Our Children and Young People*

Our Partnership  
Our Plan

**Children and Young  
People's Plan 2006-09**

Summary of progress 2008



# Our vision for the children and young people of Essex

The agencies and organisations that form the Children and Young People's Strategic Partnership want to create a better future for Essex children and young people, their families and those who support them.

Our vision is for a *highly participative and aspirational environment to ensure that children and young people lead positive and fulfilling lives.*

We will support parents and carers and the community to nurture our young people.

We will provide services that develop life skills, that are available when needed, and that focus on prevention rather than cure.

Our workforce will be knowledgeable practitioners, from a range of agencies. They will feel empowered to make decisions and will engage with children and young people in a participative way.

We will take a shared responsibility for achieving better outcomes for children and young people.



**“Going to the sunshine room has helped me to try to stay on task and I am a good friend now”**

**“Stop bullying!”**

**“I eat lots of fruit and vegetables and I never stop running around”**



**“We get too much homework, I get homework from every subject and I have homework to do every night. I am missing out on playing with my friends”**

**“You showed our son that people do care, you got him into school, you showed great support whether it be on the phone or family meetings”**



# Contents



<b>Our Children's Trust Partners</b>	<b>6</b>
<b>Foreword</b>	<b>8</b>
<b>Purpose of the Children and Young People's Plan</b>	<b>9</b>
<b>Local context</b>	<b>10</b>
<b>Our improvement journey</b>	<b>12</b>
<b>How the Children and Young People's Plan links with our other plans</b>	<b>16</b>
<b>Working in partnership</b>	<b>18</b>
<b>Key achievements 2007-08 - how we made a difference.</b>	<b>22</b>
<b>Key priorities - our focus for 2008-09</b>	<b>27</b>
<b>Service management</b>	<b>30</b>
<b>Annexes</b>	<b>32</b>
<b>Annex 1 - Tables relating to the performance review 2006-08</b>	<b>32</b>
<b>Annex 2 - Tables relating to targets for 2008-9</b>	<b>41</b>
<b>Annex 3 - Action plans arising from last year's review</b>	<b>54</b>



# Our Children's Trust Partners

## Members of the Children's Trust arrangements

### Local Children and Young People's Strategic Partnerships

Basildon, Billericay & Wickford Children and Young People's Strategic Partnership

Braintree Children and Young People's Strategic Partnership

Brentwood Children and Young People's Strategic Partnership

Castle Point and Rochford Children and Young People's Strategic Partnership

Chelmsford Children and Young People's Strategic Partnership

Colchester Children and Young People's Strategic Partnership

Epping Forest Children and Young People's Strategic Partnership

Harlow Children and Young People's Strategic Partnership

Maldon Children and Young People's Strategic Partnership

Tendring Children and Young People's Strategic Partnership

Uttlesford Children and Young People's Strategic Partnership



## **Groups represented on the Stakeholder Forum**

Association of Secondary Headteachers in Essex	Essex School Governors' Association
Association of Special Education Senior Managers in Essex	Essex Schools Forum
Basildon District Council	Families InFocus (Essex)
Braintree District Council	Harlow District Council
Brentwood Borough Council	Learning & Skills Council (Essex)
Castle Point Borough Council	Maldon District Council
Chelmsford Borough Council	Mid Essex Primary Care Trust
Children's Fund Essex	NHS Acute Trusts
Children's Society, Chelmsford	North East Essex Primary Care Trust
Colchester Borough Council	North Essex Partnership NHS Foundation Trust
Epping Forest District Council	Parentline Plus
Epping Forest Voluntary Action Group	Rainbow Services
Essex and Southend Healthy Schools Partnership	Rainer
Essex Community Foundation	Rochford District Council
Essex Council for Voluntary Youth Services	SCOPE
Essex County Council	South East Essex Primary Care Trust
Essex Fire & Rescue Service	South Essex Partnership NHS Foundation Trust
Essex Forum SNAP	South West Essex Primary Care Trust
Essex Foster Carers Council	Teenage Pregnancy Partnership Board
Essex Police	Tendring District Council
Essex Primary Headteachers' Association	The Prince's Trust
Essex Probation Service	Uttlesford District Council
Essex Racial Equality Council	West Essex Primary Care Trust
	WHCM Counselling and Support

## **Organisations that attend Children and Young People's Strategic Partnerships**

Brentwood Catholic Diocese  
Chelmsford Church of England Diocese  
Essex Association of Boys Clubs

# Foreword

**Our ambition is clear; we want the children and young people of Essex to have the best quality of life.**

Through the Essex Strategy, our Local Area Agreement and the County Council's EssexWorks programme, we want to achieve the best quality of life in Britain in the next four years. Explaining how we will deliver this, our Children and Young People's Plan sets out our shared vision of Essex as a county where children and young people are safe, healthy and have every opportunity to make the most of their potential.

Our priorities for children and young people in Essex are ambitious and challenging. Critically, they are shared with our partners. Working together we can achieve more, and we are confident in our capacity to help improve children's lives.

Integral to this is delivering increases in educational attainment and protecting our most vulnerable citizens.

Both as 'corporate parent' for the county's children and young people and community leader for all Essex residents, Essex County Council has made the best in class performance for children and young people our most important improvement agenda.

Together we are transforming the way we support children and young people. By better engaging children and their families, learning from what our citizens have told us are their priorities, and responding to feedback. We are adapting our services to meet the needs of children, young people and their families more effectively.

Through the Essex Children's Trust, we are reshaping services so that children, young people and their families can quickly and easily access local services when and where they need them.

We recognise the critical importance of continuing to improve and embed our performance management arrangements across the partnership. We have developed systems for monitoring, and challenging progress against our priorities.

To understand more fully the improvement journey we have embarked upon, we urge you to read this Children and Young People's Plan in conjunction with our Joint Area Review self-assessment. Our ambition is clear and we are committed to achieving it.



Joanna Killian,  
Chief Executive, Essex County Council and  
Chair, Essex Children and Young People's Strategic Partnership Board

# Purpose of the Children and Young People's Plan

In 2006, the Essex Children and Young People's Strategic Partnership (CYPSP) outlined their vision, values and local priorities for Essex youth in a 2006-09 Children and Young People's Plan (CYPP).

This update is the second annual review and refresh of that three year plan. It summarises the progress made during 2007-08 delivering the Children and Young People's Plan and sets out our aims and objectives for the coming year and beyond.

Given our 2007 Annual Performance Assessment, it is more important than ever that we make explicit what we have achieved this year. We believe that the last six months have seen rapid improvement in the services we deliver both as a County Council and as a partnership. This CYPP reports on progress made in the areas for improvement identified by Ofsted. It also focuses on our Change Programme and improvements to our performance management arrangements.

This review concentrates on the targeted services that underpin the 12 priorities in the 2007-08 Plan, identified with our partners within the Children's Trust as likely to make the most impact in improving the lives of children and young people.

To gain a fuller appreciation of the scale and complexity of our work and our commitment to deliver best in class services, this CYPP should be read in conjunction with the Joint Area Review self-assessment.



# Local Context

Essex is large. It covers 1,300 square miles, bordering Suffolk and Cambridgeshire in the north, Hertfordshire in the west and four London boroughs in the south.

Essex is complex. There are 12 district and borough councils in Essex, and two unitary authorities - Southend and Thurrock. When one considers other public sector partners, the pattern grows more complex still; we deliver services to children and young people in partnership with five Primary Care Trusts, two mental health partnerships, three Foundation NHS Trusts, two Acute NHS Trusts, plus County-wide Police and Fire services.

Essex is populous. 1,360,000 citizens live in Essex - 329,100 (24%) of them are children and young people. Recent population growth has outstripped the UK average and the population is expected to continue to rise, year on year, over the next 20 years. With Essex's population slightly older than the national average and ageing faster, the converse of this particular demographic trend is the declining proportion of children and families in our county – the percentage of residents aged under 19 is forecast to fall from 24.2% today to 21.6% by 2028

Essex is heterogeneous. Within the county there are large, sparsely populated rural areas and over 300 miles of coastline. Yet Essex also contains two substantial 'New

Towns' – Basildon and Harlow – and older major conurbations such as Colchester and Chelmsford. It is the home to three national growth areas – the Thames Gateway, Haven Gateway and M11 corridor and the scheme to revive the Thames gateway is the largest regeneration project in Europe.



Essex is increasingly ethnically diverse. In 2001, 2.9% of the population belonged to Mixed, Black, Asian or Chinese ethnic groups, compared to a figure of 9.1% for England as a whole. Recent estimates suggest that 8.6% of the population belong to Black and Minority Ethnic (BME groups), compared to a figure of 15.3% for England as a whole. These groups are most concentrated in Brentwood, Epping Forest and Harlow but even in these areas the BME groups account for a smaller proportion of the population than nationally. The largest BME group in Essex is 'White non-British' but this is likely to change in the future. The evidence suggests limited economic migration to Essex from Eastern Europe, and although 44% of Essex's BME population is White and not British, only 21% of those aged under-16 identify with this group. Amongst under-16s the mixed ethnic group is the largest by far, accounting for 32% of all BME residents. As this cohort grows the local population will become more diverse.

Axiomatically, this social, geographic and ethnic diversity brings a broad range of public policy issues to the fore. Despite pockets of deprivation (in parts of Basildon, Tendring, Colchester and Harlow), there are no large concentrations of disadvantage, and Essex was ranked as one of the 20% least deprived counties in the 2007 Index of Multiple Deprivation. However, disadvantage can seem greater for those affected in such an affluent environment and we devote time and energy to address these pockets of deprivation and provide a context and support for their improvement.

At the beginning of June 2008 there were 1,266 looked after children (LAC) in Essex. Of these 41 were unaccompanied asylum seekers (UAS). This LAC population equates to 42.7 per 10,000 population or 41.3 per 10,000 excluding the UAS group.

# Our Improvement Journey

Since 2003, with the appointment of a single deputy Chief Executive overseeing children and adult social care and the schools and community services portfolio, Essex County Council has demonstrated clear ambition and an innovative approach to improving outcomes for children and young people and their families.

This progress has been recognised. Our successful Pathfinder Children's Trust in Braintree and a number of programmes which led to the award of Beacon Status for Integrated Children's Services in 2004 illustrate the Council's progress and commitment to best in class performance. These developments informed the decision to restructure our services in 2007.

Over the last four years the Council has seen significant developments in the Children's Trust arrangements. We have progressively strengthened our capacity to lead the children's agenda and secure improvements to the life chances of children and young people.

Our relationships with schools, and their relationships with each other, have also made significant advances over recent years, with mature arrangements such as the APC (Association of Secondary Headteachers' in Essex and Partners' Collaborative), EPC (Essex Primary Headteachers' Association and Partners' Collaborative) and the Schools Forum, all drawing headteachers and school leaders into constructive dialogue focused on improvement.

Yet, notwithstanding these improvements, our Annual Performance Assessment in 2007 was not what we would have wished. Following the Annual Performance Assessment, greater focus was given to addressing areas of relative poor performance, and the result has been a significant shift in outcomes, with real impact on children and young people and on our systems to support them. This improvement is explained in more detail in the appendices to our Joint Area Review Self Assessment document of June 2008. However, evidence of the step-change in performance that has occurred in the last six months include:

- **Ensuring that looked after children have annual dental and health checks to bring performance in line with the national average** – Changes have been made to ensure robust weekly monitoring of the target. Current performance is ahead of the trajectory for the year. Currently performance is 71.1% for health assessments and 67.9% for dental checks. We have set our target at 86% for 2008-09.

- **Publishing eligibility criteria for referrals of children in need** – We have consulted, revised and analysed impact of the eligibility criteria pilot and implications for future modelling of services. Draft criteria was published in 2007/08. Final criteria will create a single pathway for referrals.
- **Ensuring initial assessments and reviews of looked after children are completed on time** – We have set our target for initial assessments at 74% for 2008/09. As of the first two weeks of the new reporting year, 83.3% of assessments have been completed on time. The completion of core assessments is at the best level of performance for three years. We have set our provisional target at 85% for 2008-09. Although not yet hitting our target of 85%, we are delivering the best performance in completing reviews of looked after children for two years, achieving performance of 84%.
- **Ensuring all looked after children are allocated to qualified social workers** – Given the difficulties associated with recruiting social workers, Essex County Council took the innovative approach of recruiting non-qualified social workers to remedy this shortage. This, however, meant that in 2006-07 we missed our statutory target of ensuring all looked after children were allocated to a qualified social worker – with 72.3% being allocated. We have worked hard to address this since January 2008 and our current performance is 99.1%, predicted to reach 100% imminently.
- **Reducing the number of secondary schools in categories of concern and ensuring more effective take-up of support by schools judged inadequate** – We have improved identification of schools which require early intervention and provided targeted support; during the financial year 2006-7 four secondary schools were removed from special measures (although one remained in notice to improve). The number on roll of these schools is 3,303
- **Ensuring secondary floor targets are met** – The number of schools below the floor target (30% 5+ A\*-C) in 2005 was 24. In 2007 it was 18. The trajectory shows no schools below floor targets by 2011.
- **Meeting statutory requirements for the education of excluded children and young people** – Performance for provision by day 6 is 62%. However 95% of young people in our Pupil Referral Units are now getting their full entitlement

and benefiting from constructive engagement in education, comparing favourably to the England average of 80.3%.

- **Reducing absence, particularly in secondary schools** – Performance is better than the England average and statistical neighbours on authorised absence at primary but worse on secondary. We have integrated education welfare into Teams Around the School, the Child and Community to ensure better join-up with schools; have instituted a more robust approach to persistent absentees and parents who condone absence; continue with truancy sweeps; are improving whole school systems and approaches to improving attendance; and are targeting schools with lowest attendance rates.
- **Clarifying the Council's strategy for developing school diversity** – Our strategy was agreed by Cabinet in January 2008 and is a key Pledge in the EssexWorks Corporate Plan, with several active schemes being taken forward. Five Academies are in development, with three to open in September. One federation is in existence.
- **Improving the strategic value of small scale programmes and initiatives by ensuring they have wider benefits, such as increasing capacity** – Actions are now being implemented to adopt new processes into programme management. Existing projects have been reviewed to identify how wider benefits could be disseminated
- **Increase the proportion of young teenage mothers in education, employment or training** – Despite activities to raise awareness among teenage mothers, performance at 18.6% (14.5% in 2006-07) is below both statistical neighbours and the England average (30.3% in 2006-07). This remains an ongoing area of work. However, of the 68 teenage mothers targeted during January to March 2008, 100% now have learning pathways and have participated in their own personal planning.
- **Ensure effectiveness of transition arrangements for young people with learning difficulties and/or disabilities** – 58% of Year 9 pupils with learning difficulties or disabilities have plans in place - this will be over 85% by end of the summer term. Longer term improvement is in process to be delivered by the Improvement Programme, overseen by a Governance Board including Scrutiny Chairs.

- **Further improve recruitment and retention** – A multi-agency Workforce Strategy was agreed in March 2008 and implementation plan prepared. We have a relaunched recruitment campaign to target experienced social workers and senior practitioners and have moved budget to increase the number of current non-social work staff who have been offered social work training courses. We have successfully recruited over 60 social workers in the past two months.
- **Ensure that future plans are clear, succinct and measurable enough to mark progress** – The Children and Young People’s Plan has been substantially revised for its third year and contains a more detailed action plan with clear targets and milestones. There are ‘SMART’ criteria by which to judge progress. Essex County Council’s Schools, Children and Families directorate now has more detailed plans which address service improvements as well as the areas for development outlined in the 2007 APA. A revised quality assurance process for Schools Causing Concern is in place.

The Council and its partners believe better performance management, a more sophisticated approach to commissioning, a financial strategy to drive efficiencies and enable investment in preventative services, thorough needs analysis and a better understanding of our children and young people’s priorities will deliver new levels of performance.



# How the Children and Young People's Plan links with our other plans

Following extensive public engagement and consultation, the Essex Partnership (the county-wide Local Strategic Partnership) produced an Essex Strategy setting out an overarching vision for Essex for the next ten years.

The Essex Partnership's latest Local Area Agreement (LAA) has a shorter timeframe, seeking to deliver improvements to Essex residents' quality of life over the next three years.

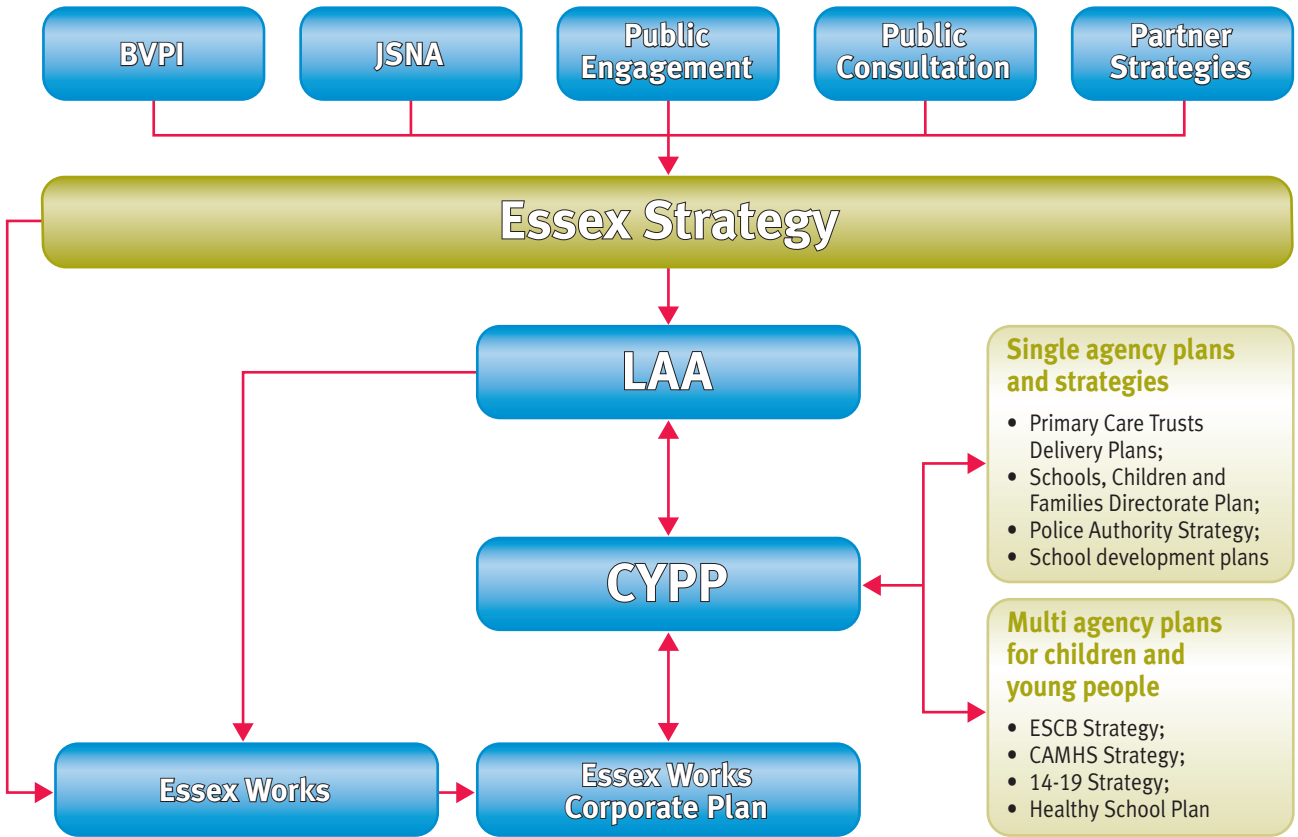
Both informing and informed by these plans, the Children and Young People's Plan needs to be understood as part of this suite of strategic documents all of which seek to deliver improved outcomes for local residents. The vision for children is, in turn, supported by a range of single agency and multi-agency plans and strategies.

Closely linked to the LAA, but also aligned to EssexWorks, Essex County Council's four year delivery programme, the EssexWorks Corporate Plan highlights the key priorities for the organisation for the forthcoming year. The over-riding priority is to ensure we as a local authority delivers best in class services to children and young people.

The Children and Young People's Plan includes children and young people-related priorities within the Local Area Agreement and EssexWorks Corporate Plan and its own youth-specific priorities. Responsibility for delivering the Local Area Agreement and Children and Young People's Plan priorities rests with the Children and Young People's Strategic Partnership Board – a multi-agency group including all Essex Primary Care Trusts, a number of district and borough councils, elected Members, the voluntary sector, Essex County Council, Police and Fire services, a range of headteachers, the Learning and Skills Council, Government Office East, and the Church.

The diagram opposite best summarises this symbiotic relationship.

**Diagram A – the Children and Young People’s Plan and other key public sector strategic documents**



# Working in partnership

**Organisations have changed. Simply put, without effective partnership working we could not deliver the improvements to children's quality of life that we are committed to.**



## **Our Partnership Vision**

The agencies and organisations that form the Children and Young People's Strategic Partnership want to create a better future for Essex children and young people, their families and those who support them.

Our vision is for a *highly participative and aspirational environment to ensure that children and young people lead positive and fulfilling lives.*

We will support parents and carers and the community to nurture our young people.

We will provide services that develop life skills, that are available when needed, and that focus on prevention rather than cure.

Our workforce will be knowledgeable practitioners, from a range of agencies. They will feel empowered to make decisions and will engage with children and young people in a participative way.

We will take a shared responsibility for achieving better outcomes for children and young people.

## **Our Partnership Values**

As a Partnership we believe in:

- **Prevention first and always** – in all our strategies, plans, services and interventions we must continue to shift the focus from dealing with the consequences of difficulties in children's lives, to preventing things from going wrong in the first place.
- **Access to services when and where children and young people need them** – children and young people should get help as soon as they need it. This means

agencies must work closely with parents and carers, helping them to build on their strengths, and supporting good parenting. People know what makes a difference in their lives. The development of our services will be framed by our engagement with children, young people and those who care for them.

- **Families at the heart of decision-making** – families should shape their own futures, with help from services when they need it. We will ensure that children, young people and their families are fully and actively involved in decisions and developments that affect their lives.
- **Being stronger together** – the Essex Children’s Trust brings together staff from a range of organisations. We will further streamline and ‘join up’ commissioning budgets and services by improving the way we share relevant information and by providing simplified access for children, young people and families to information, advice, guidance and support.
- **Realising potential** – Essex is enriched by its many diverse communities. By recognising and valuing people’s different experiences and backgrounds we can realise the potential of all children and their families.

## Our Partnership Aims

We want our children and young people to:

- **Be Healthy** – enjoying the best possible health and being able to make healthy lifestyle choices.
- **Stay Safe** – being protected from harm, living in safe and stable families and communities, and growing up to be capable of looking after themselves.
- **Enjoy and Achieve** – having the opportunities to reach their potential, enjoying their learning, and developing a broad range of skills for adulthood.
- **Make a Positive Contribution** – enjoying a range of opportunities that develop confidence and positive attitudes and behaviours, enabling them to contribute responsibly and positively to the life of their local communities.
- **Achieve Economic Wellbeing** – living in decent homes and being well prepared for work and being able to achieve their full potential in adult life.

## **Our Partnership Intentions**

Working together we will:

- narrow the gap between those who do well and those who find life more challenging. For those children and young people who have particular needs, the Children and Young People's Strategic Partnership takes its responsibilities very seriously.
- provide access to high-quality, timely, flexible and joined up services in local communities that meet the individual needs of children and young people.
- provide appropriate support to parents and carers at key points and events in the lives of their children.
- identify and prevent problems wherever possible, instead of reacting to situations once they have arisen.
- empower children and young people to take advantage of the opportunities available to them according to their age and ability.

## **Our Partnership Arrangements**

Strong partnerships are critical to our success.

The Children's Trust consists of a single county-wide partnership board, 11 local Children and Young People's Strategic Partnerships (CYPSPs) and 27 local delivery groups. Individual agencies are responsible for collaborating through the Children's Trust arrangements to help deliver the priorities in this Plan.

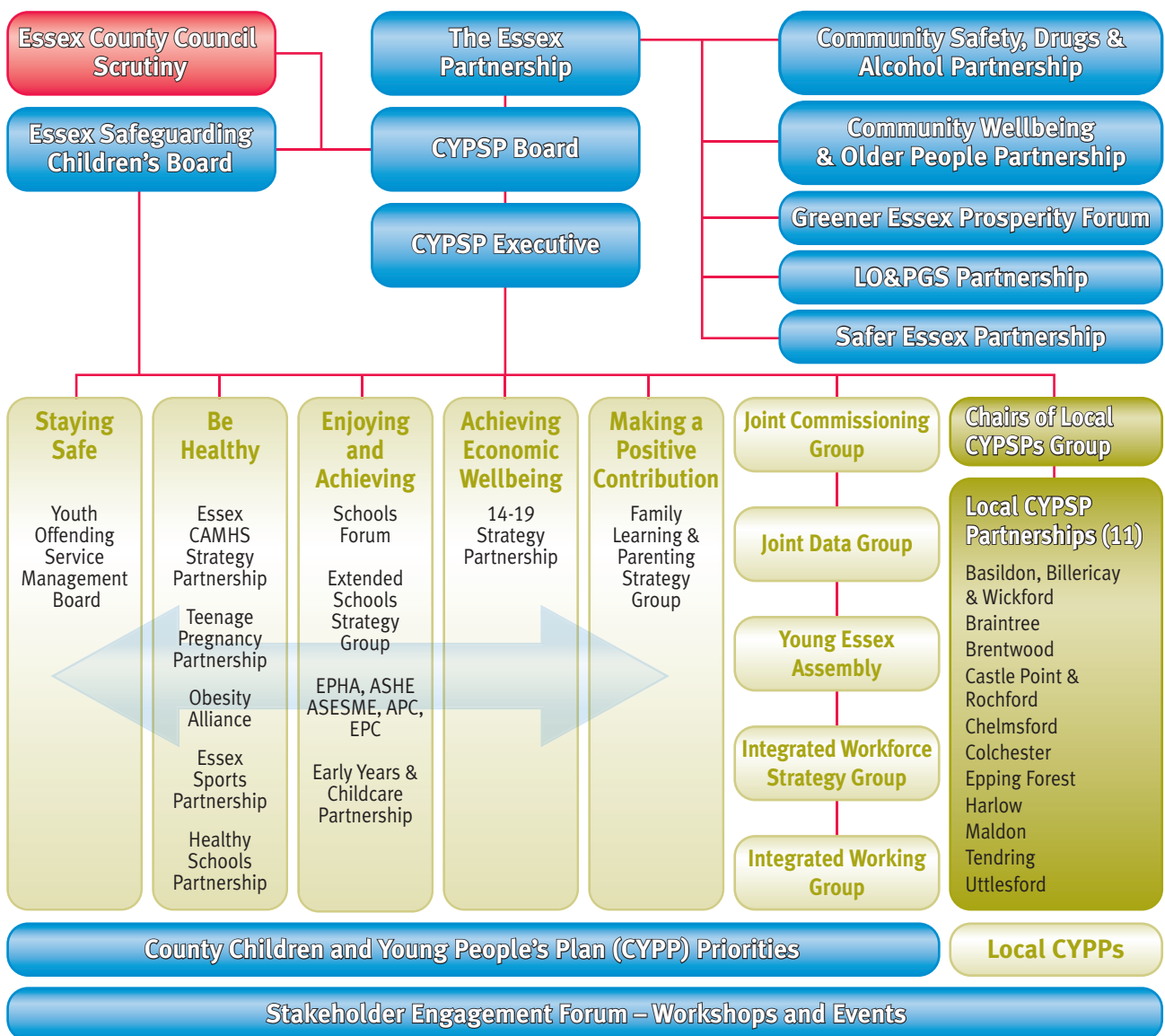
The Children and Young People's Strategic Partnership Board plans and oversees the commissioning of high quality services to meet the needs of children, young people and their families. Commissioning occurs at the local Children and Young People's Strategic Partnership level unless there are cogent reasons for doing it at the county-wide or regional level.

The Board is chaired by the Chief Executive of Essex County Council. The Cabinet Member for Schools, Children and Families, responsible for leading the engagement of local communities and ensuring that services improve outcomes, is Vice Chair of the Board.

Members of the Board and their organisations and the wider stakeholder forum have worked collaboratively to define the priorities in this plan and determine the action plans that will deliver improvements against these priorities.

The partnership will enable efficiencies across services and ensure resources are redirected to front-line services, particularly those focused on early intervention and de-escalation of need. A Joint Commissioning Strategy has been developed setting out the detail of these arrangements.

We have a shared approach to commissioning and performance management.



# Key achievements 2007-08

## – how we made a difference.

We must be unrelentingly outcome focused. In 2007-08 we prioritised 12 areas.

Outcome	Priority
<b>Be Healthy</b>	<b>Priority 1</b> - Reduce the percentage of obese children who are between the ages of 5 to 10 years
	<b>Priority 2</b> - Reduce the rate of pregnancies under 18 years of age compared with 1998
	<b>Priority 3</b> - Reduce substance misuse
	<b>Priority 4</b> - Improve children's mental health and emotional wellbeing
<b>Stay Safe</b>	<b>Priority 5</b> - Reduce the number of children and young people who have been the victims of crime and anti-social behaviour, such as bullying.
	<b>Priority 6</b> - Ensure children and young people are kept safe where they are neglected or caught up in domestic violence.
<b>Enjoy and Achieve</b>	<b>Priority 7</b> – Raise educational attainment.
	<b>Priority 8</b> – Raise the achievement levels of children and young people with learning difficulties and disabilities
<b>Make a Positive Contribution</b>	<b>Priority 9</b> – Increase the confidence and community participation of children and young people through positive play, leisure, cultural, recreational , volunteering and community activities
	<b>Priority 10</b> – Reduce offending by increasing positive attitudes and behaviours amongst those at risk of offending or who are offenders
<b>Achieve Economic Wellbeing</b>	<b>Priority 11</b> – Increase the number of young people who take a job or stay on in full time education or training at 16 to 18
	<b>Priority 12</b> – Increase the percentage of young people leaving care who have accommodation that meets their particular needs

## Be Healthy

Although **childhood obesity** across Essex is lower than the national average, we continue to try to drive down the numbers of obese children. While there are a number of pan-Essex nutrition and exercise initiatives, our efforts are particularly focused on those districts where rates are above both Essex and national averages - Epping Forest and Harlow (within West Essex PCT) and Tendring and Colchester in North East Essex PCT).

We continue to deliver the National Healthy Schools Programme - there are 280 (49%) accredited Healthy Schools up from 40% in December 2007, and we will achieve 55% by July 2008 and 65% by December 2008. Over 500 out of 571 schools and 18 of our 19 Special Schools are participating in the programme.

87% of school pupils within School Sport Partnerships participate in at least two hours high quality physical education and school sport per week, compared to a national average of 86%. This is a consistent improvement over the past two years. By September this year we anticipate further improvement, exceeding the Public Service Agreement target of pupils receiving two hours of high quality PE and school sport. To further promote physical activity there are nearly 500 School Travel Plans prepared and 94 walking buses in Essex.

**CASE STUDY** - Jointly funded and delivered, the **Mind, Exercise, Nutrition, Do It (MEND)** programme in Epping Forest is a well-evidenced nine week practical programme, targeted at parents, children and young people who have problems with their weight.

Progress in reducing **teenage conception rates** has been consistent, with a 12% reduction during the period 1998-2006. The rate fell from 36.9 per 1,000 to 32.4 per 1,000 in 2006. This compares favourably to the national average of 41 per 1,000.

Strong partnerships have developed around young people who are at risk or are engaged in **substance misuse**. We have seen reductions in the proportion of children who use alcohol, drugs or tobacco. Some 13,000 Year 7 students (80% of the total) have participated in the *2Smart Roadshow* – a Police-organised event focussing on managing risks in their lives – including bullying, knives, staying safe, drugs and alcohol.

The Council has been proactive in targeting traders and has reduced the sale of tobacco to young people from 21% to 12% and reduced the supply of alcohol from 34% to 21% in the last year.

**CASE STUDY** - *The Crucial Crew* is a multi-agency community safety programme delivered to all Year 6 pupils. The programme includes a project helping pupils make decisions about crime, personal safety and substance misuse.

With a focus on **improving children's mental health and emotional wellbeing**, 273 schools have achieved the emotional health and wellbeing standard of the National Healthy Schools Programme. For those children and young people who might need support we are now able to provide 85 outreach workers from our network of children's centres.

## Stay safe

While we identify 100% of the vulnerable children who have experienced domestic violence or are exposed to neglect and require safeguarding and ensure they are able to access relevant support programmes, we have not met our target of having a qualified manager assess domestic violence notifications in a timely manner – 34% against our target of 40%.

## Enjoy and achieve

While children's **educational achievement** at Foundation Stage is below our statistical neighbours, we make marked progress by the end of Key Stage 1 when performance is in line with similar authorities and pupils' standards of reading and writing are above the national average.

As a result of targeted interventions, we have reduced the total number of primary schools below floor targets from 104 schools in 2004 to 64 schools in 2007.

Key Stage 3 standards are average but they are improving. Progress from 11-14 is in line with similar authorities with progress 14-16 less secure. The percentage of schools with pupils achieving 5+A\*-C GCSE grades including English and mathematics measure is slightly below statistical neighbours but improving over the past two years at twice the previous rate.

**CASE STUDY** - The Excellence Clusters programme has had a positive impact particularly in Tendring, involving The Harwich School, Colbayns High School, Clacton County High and Bishops Park College, with improved outcomes for students at Key Stage 3 in English, mathematics and science.

The Traveller Education Service targets its resources to schools and pupils according to relative need. 62.5% of responses from schools rated the support high; the remaining 37.5% of schools gave a medium rating to the support.

Overall we have not met the targets we set ourselves to raise achievement levels for **children and young people with learning difficulties and disabilities**. Whilst this is disappointing, there are positive areas. The progress of children and young people with learning difficulties and disabilities is good or better in 69% of primary schools - compared to 64% in similar authorities.

## Make a Positive Contribution

The Young Essex Assembly, now in its fourth year, has helped to **increase the confidence and community participation of children and young people**. In the last two years, 690 youth groups accessed £2 million of youth funding, through a network of 13 youth banks.

Acknowledging their critical role, we also support young carers. Respite breaks and personal development opportunities are available through 14 projects across Essex providing support and services to over 600 young carers. All district and borough councils have entered into partnership arrangements to enable Essex young carers to have access to free swimming and leisure facilities in their local community. A virtual grants panel has been developed which provides individual young carers with one-off small payments to ease severe need and support their caring role.

## Achieve Economic Wellbeing

We are succeeding in **increasing the number of young people who take a job or stay on in full time education or training between 16 to 18**. The proportion of young people not in education, employment and training has reduced from 8.6% in 2004/05 to 5.4% in December 2007, below the average for England and placing Essex as second highest performing authority within the Eastern Region.

More young people are progressing into post-16 education and training options with the assistance of supported funding; 125 families are accessing supported funding in 2007-08, compared to 82 in the preceding year. Since 2006, the Essex Awards Trust has helped 30 young people enter further or higher education.

89% of care leavers are able to find accommodation that meets their needs.



**CASE STUDY** - We established our Local Area Agreement (8.1) target, to achieve 55.5% of young people leaving care attaining accommodation that meets their assessed needs. Through innovative projects, improved joint working with district/borough councils and housing providers, and partnerships with The Prince's Trust and a Registered Social Landlord over 85% of our looked after young people leaving care are provided with accommodation that meets their needs.

# Key Priorities - our focus for 2008-09

Acting upon the evidence gathered from the Joint Strategic Needs Assessment (JSNA), our second Local Area Agreement, the Annual Public Health Reports 2007, and our performance in 2007-08, our focus for this year has evolved.

We have replaced our priority to increase educational attainment with a range of more focused objectives. We now focus both on the performance at school of children with learning difficulties and disabilities and on the effectiveness of their transition arrangements. We have also taken the decision that while increasing the confidence and community participation of children and young people through positive play, leisure, cultural, recreational, volunteering and community activities remains important, it is no longer a top-tier priority. In addition to 11 targets retained from 2007-08, the refreshed Plan contains 13 new priorities.

Outcome	Priority
<p><b>Be Healthy</b></p>	<p><b>Priority 1</b> - Through the promotion of healthy eating and physical activity we will see a reduction in childhood obesity across Essex</p>
	<p><b>Priority 2</b> - Reduce the rate of conceptions for young women under 18 years of age</p>
	<p><b>Priority 3</b> - Reduce the numbers of children and young people engaged in substance misuse</p>
	<p><b>Priority 4</b> - Through improving mental health and emotional well-being, ensure our children and young people will be resilient and able to develop independence and autonomy</p>
<p><b>Stay Safe</b></p>	<p><b>Priority 5</b> - We will prevent bullying and intimidation and provide effective and timely support to children and young people who have been affected by it</p>
	<p><b>Priority 6</b> - We will provide services that protect children and young people from domestic violence in a timely manner and with a family support focus</p>
	<p><b>Priority 7</b> - We will reduce the number of children in need who are subject to a child protection plan by increasing the level of targeted family support <b>NEW</b></p>

Outcome	Priority
	<p><b>Priority 8</b> - Provide services to prevent children becoming looked after and improve the permanency and placement stability for looked after children.</p>
<p><b>Enjoy and Achieve</b></p>	<p><b>Priority 9</b> - Improve educational outcomes for all children and young people <b>NEW</b></p> <p><b>Priority 10</b> - Improve attendance at secondary level <b>NEW</b></p> <p><b>Priority 11</b> - Raise the achievement levels of children and young people with learning difficulties and disabilities and ensure the effectiveness of their transition arrangements</p> <p><b>Priority 12</b> - Ensure that access to education and out of school activities is maximised for those children with learning difficulties or disabilities, both in terms of specialist and universal provision <b>NEW</b></p> <p><b>Priority 13</b> - The educational outcomes of our looked after children is one of our top priorities. We will work to ensure children and young people are living in settled placements that encourage them to focus on their education with additional support services to increase their access, attendance and attainment levels <b>NEW</b></p> <p><b>Priority 14</b> - Increase the percentage of looked after children aged 16 who are engaged in education, training or employment at the age of 19 <b>NEW</b></p> <p><b>Priority 15</b> - Ensure provision of high quality schools and settings <b>NEW</b></p>
<p><b>Make a Positive Contribution</b></p>	<p><b>Priority 16</b> - We will encourage positive behaviour and reduce the incidence of first time and re-offending within our young population</p>

Outcome	Priority
<p><b>Make a Positive Contribution</b></p>	<p><b>Priority 17</b> - We will increase the number of children and young people and their families contributing to key decisions affecting their lives, and involved in planning, monitoring and managing the delivery of services <b>NEW</b></p> <p><b>Priority 18</b> - We will ensure newly registered child care meets equal opportunity requirements <b>NEW</b></p> <p><b>Priority 19</b> - We will deliver our young carers strategy <b>NEW</b></p> <p><b>Priority 20</b> - We will increase the numbers of children and young people participating in positive play, leisure, cultural, recreational, volunteering and community activities <b>NEW</b></p>
<p><b>Achieve Economic Wellbeing</b></p>	<p><b>Priority 21</b> - We will increase the number of young people who take a job or stay on in full-time education or in training between 16 to 18 years.</p> <p><b>Priority 22</b> - We will increase the percentage of young people leaving care who have accommodation that meets their particular needs</p> <p><b>Priority 23</b> - Refresh the 14-19 strategy and ensure sufficient capacity for delivery <b>NEW</b></p> <p><b>Priority 24</b> - We will ensure our most vulnerable families have access to decent housing <b>NEW</b></p>
<p><b>Service Management</b></p>	<p><b>Priorities</b> -</p> <ul style="list-style-type: none"> <li>• Develop effective IT infrastructure</li> <li>• Ensure widespread awareness of data protection and Information Governance</li> <li>• Implement the Integrated Workforce Strategy action plan</li> <li>• Strengthen procurement</li> <li>• Move the pattern of expenditure away from complex needs to preventative services</li> <li>• Further improve the effectiveness of the Children's Trust Approach</li> </ul>

# Service management

To achieve the outcomes in this Plan, we are planning to refocus and realign our resources to meet the needs of our children and young people in the county and have secured improvements in the service areas previously identified as 'poor performing'.

Over recent months, considerable improvements have been put in place. These include:

- new governance and leadership arrangements;
- implementation of a more rigorous, challenging and effective performance management framework;
- sustained focus on prioritisation around the preventative agenda;
- improvements in key aspects of service delivery; and
- greater clarity around our ambition to achieve excellence. The commitment by Essex County Council to deliver best in class performance for children's services is indicative of the desire to deliver improved outcomes to Essex's children and young people.

The challenge now is to maintain the focus and impetus around improvement and to ensure continued sustainable progress across all areas of children's services.

We are building on commissioning developments in 2007-08, including the Regional Preferred Provider Framework for Independent Fostering Provision Contract – negotiated across the Eastern Region 5 local authorities (Hertfordshire, Suffolk, Essex, Southend and Thurrock) with Essex County Council taking the lead role. The contract sought to ensure that children were placed locally with access to school provision and improved quality of care, while, at the same time, reducing the external spend on Independent Fostering Provision. Given its success, the same approach is being rolled out to residential care.

The present Building Schools for the Future programme (waves 4, 5 and 6) bring a funding package of approximately £350 million to cover the construction of 22 secondary schools, 6 special schools and 2 Pupil Referral Units.

We have been actively developing our performance management arrangements in Essex County Council's Schools, Children and Families Directorate. The performance management and review process now provides a more visible framework for analysis and reporting both internally within the Directorate and to elected Members and externally through the Children and Young People's Strategic Partnership. Performance management now provides a more systematic approach to the identification of problem areas. There is closer alignment between priorities and targets of the Children and Young People's Strategic Partnership and Essex County Council's Schools, Children and Families Directorate. Performance information is reported more frequently and in a more accessible format, making clear where performance against targets is less than we should expect.

A new Integrated Workforce Strategy was launched in March 2008 helping to develop our people. This cross-partnership initiative covers issues such as integrated workforce management, generic induction programmes, a generic skills framework and joint training and development programmes ensuring that together the partnership provides better, more informed services.

There has been a shift in expenditure to the new Teams Around the School, the Child and Communities, supporting preventative work on the ground. Many of these service priorities are driven locally by the people who need them, with resources targeted following feedback and consultation with communities, young people, families and carers.

A further strengthening of preventative work is to follow with the intensification of reducing escalation to higher levels of need. We are also developing new intelligence, and more actively using needs analysis and finance and performance data to benchmark our service provision relative to need and other authorities. We want to see resources increasingly deployed to improve progress in areas where performance is not good enough and where the needs analysis outcomes highlight the greatest requirements.

# Annexes

## – Annex 1

### Tables relating to the performance review 2006-08

**Table 1 – reducing teenage pregnancies**

Indicator and target - second Local Area Agreement indicator	Baseline	Performance		Target met
	1998 (CY)	2005-06 (CY)	2006-07 (CY)	
Under 18 conception rate (NI 112)	1998 rate: 36.9 births per 1000 15-17 year old girls	2005 rate: 30.6 births per 1000 15-17 year old girls -17.1% from 1998 rate	2006 rate: 32.4 births per 1000 15-17 year old girls -12% from 1998 rate)	No

**Table 2 – substance misuse**

Indicator and target	2006-07	2007-08	Target met
Reduce by 5 percentage points the percentage of young people aged 15 years who are regular smokers compared with 2007 figure of 19%	19%	16.8%	No
Reduce by 12.5% by 2009 from 55.4% in 2007 the percentage of young people aged 15 years who drink alcohol	55.4%	51.8%	Yes
Reduce by 12.5% by 2009 from 12.7% in 2007 the percentage of young people aged 15 years who use drugs	12.7%	9.4%	Yes
Reduce to 7.29% in 2008-09 the percentage of young people known to the Youth Offending Service who have re-offended with an offence relating to drugs or alcohol from 9.29% (2004-05)	8%	8.3%	No
Reduce to 25.5% in 2008-09 from 29% in 2004-05 the percentage of care leavers who misuse drugs or alcohol	14.5%	15.9%	Yes

**Table 3 – reduce the number of children and young people who have been the victims of crime or anti-social behaviour**

Indicator and target	2006-07	2007-08	Target met
Reduce by 3% each year the number of children and young people who have been the victims of crime	8,292 a reduction of -1.37 on 2005-06	8,272 a reduction of -0.24% on 2006-07	No
Reduce by 3% each year the percentage of children and young people who reported they were afraid to go to school because of bullying	49% Primary	47% Primary	Yes
	27% Secondary	27% Secondary	No
Increase by 10% year on year until 2009, from 25% in 2005-06, the reporting rate of racist incidents in schools' annual returns	30% of schools reported a racist incident; the percentage of incidents reported increased to 528 an increase of 13.5% on 2005-06	33% of schools reported a racist incident; the percentage of incidents reported increased to 644 an increase of 22% on 2006-07	Yes



**Table 4 – ensure children and young people are kept safe where they are neglected or caught up in domestic violence**

Indicator and target	2006-07	2007-08	Target met
Identified vulnerable children who have experienced domestic violence or exposed to neglect to be safeguarded	100%	100%	Yes
In 2008-09 60% of domestic violence notifications are assessed by an appropriately qualified manager within five working days of the incident rate	24%	34.2%	No
Identified vulnerable children will be able to access relevant support programmes	100%	100%	Yes

**Table 5 – raise educational attainment**

Indicator and target	2006-07	2007-08	Target met
Improve attainment and achievement at Key Stage 2 through:			
i) reducing the number of schools which do not achieve floor targets in English and/or mathematics at the end of Key Stage 2;	83 schools, exceeded target of 90 schools	56 schools exceeded target of 75 schools	Yes
ii) improving attainment and achievement of pupils in the target schools at Key Stage 2 in English;	70.2% exceeded target	70% met target	Yes

Indicator and target		2006-07	2007-08	Target met
iii)	improving attainment and achievement of pupils in the target schools at Key Stage 2 in mathematics;	66.5% exceeded target	66.4%	No
iv)	improving achievement of all children's Average Points Score (APS) in English and mathematics.	26 points just missed target	26.4 just missed target	No
Reduce the number of secondary schools from 41 to 28 by 2009, where fewer than 92% of students attain 5 or more A*-G grades at GCSE (or equivalent) including English and Maths.		45 schools; missing the target of 34 schools; target recalculated	35 schools exceeding the revised target of 39 schools	Yes
Raise the achievement of looked after children				
reducing the percentage of missed school sessions;		8.19% baseline	8.9% below expected figure of 6.9%	No
i)	increasing the rolling averages 2006-2009 of Key Stage 2 attainment at Level 4 for: English	44.2%; above expected figure of 41.3%	47.5% above expected figure of 44.0%	Yes
	mathematics	37.2%; consistent with expected figure	44.4%; above expected figure of 38.9%	Yes
	science	59.5%; above expected figure of 50.6%	58.2%; above expected figure of 53.0%	Yes

Indicator and target	2006-07	2007-08	Target met
ii) increasing the rolling average of Key Stage 4 attainment 5 or more A*-G grades at GCSE or equivalent	41.4%; below expected figure of 43.7%	45.2%; below expected figure of 46.0%	No

**Table 6 – raise the achievement levels of children and young people with learning difficulties and disabilities**

Indicator and target	2006-07	2007-08	Target met
Reduce the number and the percentage of Essex children who are the lowest 20% achievers nationally.	2000-06 KS1 -0.9% KS2 -3.2% KS3 -5% KS4 -0.3%	2000-07 KS1 +0.6% KS2 -4.3% KS3 -6.9% KS4 -4.7%	Yes
Increase to 74.5% by 2009 the percentage of the lowest 20% achievers at Key Stage 2 achieving their individual targets at Key Stage 3.	72%	68.8%	No
Increase to 65% by 2009 the percentage of pupils with learning difficulties achieving 5 grades or more A*-G GCSE or equivalent including English and mathematics.	61.4%	62.9%	No

**Table 7 – increase the numbers of children and young people participating in positive play, leisure, cultural, recreational, volunteering and community activities**

Indicator and target	2006-07	2007-08	Target met
Increase the engagement of children and young people in leisure, cultural, recreational, volunteering and community activities:			
<b>Primary</b>			
Helping others near home	70%	72%	Yes
Looking after family members	87%	72% (question amended)	N/A
Helping others at school	92%	93%	Yes
Helping to improve the environment	72%	75%	Yes
<b>Secondary</b>			
Helping others at school	38%	38%	No
Caring for relatives or friends	61%	54% (question amended)	N/A
Helping to improve the environment	49%	49%	No
Involved in voluntary work	26%	27%	Yes
Coaching for a sport/activity	31%	27%	No
Young people aged 13-19 involved in youth work gain a recorded outcome	66%; target of 60% exceeded	64%; target of 60% exceeded on a significantly increased number of young people participating	Yes
Increase by 5% by 2009 the number of young people from disadvantaged groups gaining a recorded outcome in youth activities	10% increase	7.5% increase	Yes

Indicator and target	2006-07	2007-08	Target met
By September 2007 each district and borough council to have a play strategy arising from a play partnership		100%	N/A
Young people contribute to the development and implementation of a volunteer strategy	Achieved	Continuing	Yes



**Table 8 – reduce the incidence of first-time and re-offending within our young population**

Indicator and target	2006-07	2007-08	Target met
Increase the number of Acceptable Behaviour Contracts issued from 142 (2005-06) by 5% with a view to reducing the number of Anti Social Behaviour Orders and improving engagement with young people via contracts rather than Court Orders	173; above target of 149	200	Yes
Reduce by 5% reoffending of the October-December cohorts aged 10-17 years exhibiting persistent offending behaviours	35.9%	Youth Justice Board no longer require this data to be collected	N/A
Reduction in the seriousness and frequency of offending	<p>Pre Court (Reprimand and Final warning): 25% re-offended of which 18% more seriously and 10 % more frequently</p> <p>First Tier (Referral Orders, Fines etc): 42% re-offended of which 29% more seriously and 10% more frequently</p> <p>Community Penalties: 55% re-offended of which 35% more seriously and 15 % more frequently</p> <p>Custody: 61% re-offended of which 32 % more seriously and 18 % more frequently</p>		N/A

**Table 9 – young people not in education, employment and training**

Indicator and target	2006-07	2007-08	Target met
Reduce the proportion of Year 11 students who leave target schools without entering full-time education, employment or training	12.8%	9.6%; compared with a target of 12.1%	Yes
16-18 year olds who are not in education, employment or training (NEET)	6.6%	5.6%	Yes
Young people involved in the Learning Agreement initiative	395	1,410	No



## Annex 2

### Tables relating to targets for 2008-09

**Table 1 – reduce childhood obesity**

Indicator and target from second Local Area Agreement indicator	Baseline		Targets	
	2006-07 (AY) <sup>1</sup>	2008-09 (AY)	2009-10 (AY)	2010-11 (AY)
Obesity in primary school age children in Year 6 (NI 56)	15.3%	15.3%	15.0%	14.7%
Children and young people's participation in high-quality PE and sport (applies to 5-19 year olds, with 5-16 year olds to be offered 5 hours per week and 16-19 year olds 3 hours per week) (NI 57)	N/A	Baseline to be set by DCSF	To be confirmed by DCSF	To be confirmed by DCSF

**Table 2 – reduce the rate of conceptions of young women under 18 years of age**

Indicator and target from second Local Area Agreement	Baseline		Targets	
	2006-07 (CY)	2008-09 (CY)	2009-10 (CY)	2010-11 (CY)
Under 18 conception rate (NI 112)	1998 rate: 36.9 births per 1000 15-17 year old girls (2006: -12% from 1998 rate)	-20% change from 1998 rate	-30% change from 1998 rate	-45% change from 1998 rate

**Table 3 – reduce the numbers of children and young people engaged in substance misuse**

Indicator and target from second Local Area Agreement	Baseline		Targets	
	2006-07 (FY)	2008-09 (FY)	2009-10 (FY)	2010-11 (FY)
Substance misuse by young people (NI 115)	20.7% (Proxy based on TellUs 2 [2007] data)	To be confirmed by GO East	To be confirmed by GO East	To be confirmed by GO East
<b>Indicators subject to Reward Grant from first Local Area Agreement</b>				
Of the young people receiving a service for the Leaving and After Care Service, the percentage who are misusing drugs and alcohol	2004-05 (FY) 29%	2008-09 (FY) 25.5%		
The number of traders who are willing to supply alcohol to young people in Essex	2004-05 (FY) 37%	2008-09 (FY) 15%		
The percentage of young people on the books of the Essex Youth Offending Service who have re-offended with an offence relating to drugs or alcohol	2004-05 (FY) 9.29%	2008-09 (FY) 7.29%		

**Table 4 – improving the mental health and emotional well-being of children and young people**

Indicator and target from second Local Area Agreement indicator	Baseline		Targets	
	2006-07 (FY)	2008-09 (FY)	2009-10 (FY)	2010-11(FY)
Effectiveness of child and adolescent mental health services (CAMHS) (NI 51) [Baselines and targets have been set using an interim tool while a definitive one is developed c. 2009]	13	15	15	15
<b>Indicators subject to Reward Grant from first Local Area Agreement</b>				
The average of the percentages of looked after children who had been looked after continuously for at least 12 months and who had their teeth checked by a dentist during the previous 12 months and had an annual health assessment during the previous 12 months	74%	85%	90%	95%

**Table 5 – prevent bullying and intimidation**

Indicator	Baseline		Targets	
	2006-07	2007-08	2008-09	
<b>Fewer children and young people are bullied</b>				
For schools reporting 12 or more racist incidents in any one academic year, to reduce the overall number of reported incidents by at least 25% over the following two academic years.	7 schools (AY)	6 schools (AY)	5 schools (AY)	
The number of children and young people who have been the victims of crime	2005 (CY) 8,407	8,272	7,946 (FY)	

**Table 6 – reduce the number of children in need, subject to a child protection plan**

Indicator	Baseline		Targets	
	2007-08 (FY)	2008-09 (FY)	2009-10 (FY)	2010-11 (FY)
Children and young people on the child protection register per 10,000 population	18.5	22	23	24

**Table 7 – improve the permanency and placement stability of looked after children**

Indicator	Baseline		Targets	
	2007-08 (FY)	2008-09 (FY)	2009-10(FY)	2010-11 (FY)
Stable placements for looked after children (NI 62)	11.5%	11.2%	11%	10%
Indicator				
The number of 14-17 year olds in care	434	421	408	396

**Table 8 – raise educational achievement across the whole ability range**

Second Local Area Agreement indicator	Baseline		Targets	
	2006-07 (AY)	2007-08 (AY)	2008-09 (AY)	2009-10 (AY)
Achievement of at least 78 points across the Early Years Foundation Stage with at least 6 in each of the scales in Personal Social and Emotional Development and Communication, Language and Literacy (NI 72)	40.8%	46.0%	48.5%	50.0%
Achievement at level 4 or above in both English and mathematics at Key Stage 2 (Threshold) (NI 73)	71.3%	74.0%	80.0%	80.5%
Achievement at level 5 or above in both English and mathematics at Key Stage 3 (Threshold) (NI 74)	68.6%	72.0%	78.0%	78.5%

Second Local Area Agreement indicator	Baseline		Targets	
	2006-07 (AY)	2007-08 (AY)	2008-09 (AY)	2009-10 (AY)
Achievement of 5 or more A*-C grades at GCSE or equivalent including English and mathematics (Threshold) (NI 75)	47.1%	50.9%	53.4%	53.9%
Schools where fewer than 30% of pupils achieve 5 or more A*-C grades at GCSE and equivalent including GCSEs in English and mathematics (NI 78)	(18) 22.5%	(13) 16.3%	(8) 10.1%	(0) 0%
Achievement at level 5 or above in science at Key Stage 3 (NI 83)	74.5%	78.0%	82.0%	82.5%
Narrowing the gap between the lowest achieving 20% in the Early Years Foundation Stage (NI 92)	37.9%	34.7%	31%	30%
Progression by 2 levels in English between Key Stage 1 and Key Stage 2 (NI 93)	81.7%	86.3%	90.0%	90.5%
Progression by 2 levels in mathematics between Key Stage 1 and Key Stage 2 (NI 94)	76.0%	83.0%	88.0%	88.5%
Progression by 2 levels in English between Key Stage 2 and Key Stage 3 (NI 95)	26.8%	30.0%	38.0%	38.5%
Progression by 2 levels in mathematics between Key Stage 2 and Key Stage 3 (NI 96)	58.0%	62.0%	72.0%	72.5%
Progression by 2 levels in English between Key Stage 3 and Key Stage 4 (NI 97)	54.6%	57.0%	62.9%	63.4%

Second Local Area Agreement indicator	Baseline		Targets	
	2006-07 (AY)	2007-08 (AY)	2008-09 (AY)	2009-10 (AY)
Progression by 2 levels in mathematics between Key Stage 3 and Key Stage 4 (NI 98)	29.7%	31.0%	32.9%	33.4%
<b>Indicators subject to Reward Grant from first Local Area Agreement</b>			<b>Not Required</b>	<b>Not Required</b>
Attainment of all pupils in the target schools at Key Stage 2 in English Level 4+	63% 2003-04 (AY)	74% 2007-8 (AY)		
Attainment of all pupils in the target schools at Key Stage 2 in English average points score	24.9 2003-04 (AY)	29 2007-08 (AY)		
Attainment of all pupils in the target schools at Key Stage 2 in mathematics Level 4+	60% 2003-04 (AY)	72% 2007-8 (AY)		
Attainment of all pupils in the target schools at Key Stage 2 in mathematics average points score	24.9 2003-04 (AY)	29 2007-08 (AY)		
Number of schools below floor target in English and/or mathematics at the end of Key Stage 2 in 2008	105 2003-04 (AY)	60 2007-8 (AY)		
<b>Indicators not included above but agreed with the DCSF</b>	<b>2007-08 (AY)</b>	<b>Not Required</b>	<b>Not Required</b>	<b>Not Required</b>
Attainment of pupils at Key Stage 2 in English Level 4+	84%			

Indicators not included above but agreed with the DCSF	2007-08 (AY)	Not Required	Not Required	Not Required
Attainment of pupils at Key Stage 2 in mathematics Level 4+	82%			
Attainment of pupils at Key Stage 3 in English Level 5+	81%			
Attainment of pupils at Key Stage 3 in mathematics Level 5+	81%			
Attainment of pupils at Key Stage 3 in science Level 5+	78%			
Attainment of pupils at Key Stage 3 in ICT Level 5+	74%			
Pupils obtaining 5+ A*-C grades at GCSE or equivalent	63.6%			
Pupils obtaining 5+ A*-C grades at GCSE or equivalent including English and mathematics	50.9%			
Pupils obtaining 5+ A*-C grades at GCSE or equivalent average points score	367			
Primary absence rate	5.05%			

**Table 9 – improve attendance at secondary level**

Second Local Area Agreement indicator	Baseline		Targets	
	2006-07 (AY)	2007-08 (AY)	2008-09 (AY)	2009-10 (AY)
Secondary school persistent absence rate (NI 87)	7.2%	6.7%*	6.1%*	5.5%*
<b>Indicators not included above but agreed with the DCSF</b>	<b>2007-08 (AY)</b>	<b>Not Required</b>	<b>Not Required</b>	<b>Not Required</b>
Secondary absence rate	7.26%			

**Table 10 – raise the achievement levels of children and young people with learning difficulties and disabilities**

Indicator	Baseline		Targets	
	2007-08 (AY)	2008-09 (AY)	2009-10 (AY)	2010-11 (AY)
Percentage of young people aged 14+ with a learning difficulty/disability or additional needs who have received a transition plan to support their move from children to adult services	75%	90%	95%	98%

**Table 11 – raise achievement of looked after children**

Second Local Area Agreement indicator	Baseline		Targets	
	2006-07 (AY)	2007-08 (AY)	2008-09 (AY)	2009-10 (AY)
Looked after children reaching Level 4 in English at Key Stage 2 (NI 99)	57.1%	58.0%	59.3%	60.0%
Looked after children reaching Level 4 in mathematics at Key Stage 2 (NI 100)	47.6%	50.0%	61.1%	62.0%
Looked after children achieving 5 A*-C GCSEs (or equivalent) at Key Stage 4 (including English and mathematics) (NI 101)	8.7%	9.1%	17.3%	18.0%
<b>Indicators subject to Reward Grant from first Local Area Agreement</b>				
Attendance at school by LAC	8.18%	6.9%	5.4%	4.09%
Attainment of looked after children for 12 months at Key Stage 2 (percentage achieving Level 4 English)	2003-06 (AY) average 38.5%	2004-07 (AY) average 41.3%	2005-08 (AY) average 44%	2006-09 (AY) average 46.8%
Attainment of looked after children for 12 months at Key Stage 2 (percentage achieving Level 4 mathematics)	2003-06 (AY) average 35.5%	2004-07 (AY) average 37.2%	2005-08 (AY) average 38.9%	2006-09 (AY) average 40.6%
Attainment of looked after children for 12 months at Key Stage 2 (percentage achieving Level 4 science)	2003-06 (AY) average 48.1%	2004-07 (AY) average 50.6%	2005-08 (AY) average 53%	2006-09 (AY) average 55.5%

Second Local Area Agreement indicator	Baseline		Targets	
	2006-07 (AY)	2007-08 (AY)	2008-09 (AY)	2009-10 (AY)
Percentage of young people looked after for 12 months achieving 5 A*-G GCSEs, or the equivalent	2003-06 (AY) average 41.5%	2004-07 (AY) average 43.7%	2005-08 (AY) average 46%	2006-09 (AY) average 48.2%
<b>Indicators not included above but agreed with the DCSF</b>	<b>2007-08 (AY)</b>	<b>Not Required</b>	<b>Not Required</b>	<b>Not Required</b>
Looked after children at Key Stage 2 achieving Level 4+ compared to their peers	57.14%			
Percentage of Year 11 looked after children achieving a graded result in GCSE or equivalent	66.1%			
Percentage of Year 11 looked after children achieving 5+ A*-C GCSE grades or equivalent	11.86%			
Percentage of Year 11 looked after children achieving 5+ A*-C GCSE grades or equivalent, including English and mathematics	6.78%			

**Table 12 – encourage positive behaviour and reduce the incidence of first-time and re-offending within our young population**

Second Local Area Agreement indicator	Baseline		Targets	
	2007-08 (FY)	2008-09 (FY)	2009-10 (FY)	2010-11 (FY)
First-time entrants to the Youth Justice System aged 10-17 (NI 111)	To be confirmed with the DCSF	To be confirmed with the DCSF	To be confirmed with the DCSF	To be confirmed with the DCSF

**Table 13 – increase the numbers of children and young people participating in positive play, leisure, cultural, recreational, volunteering and community activities**

Indicator	Baseline		Targets	
	2006-07 (FY)	2008-09 (FY)	2009-10 (FY)	2010-11 (FY)
Increase the engagement of children and young people in leisure, cultural, recreational, volunteering and community activities:				
<b>Primary</b>				
Helping others near home	70%	72%	73%	74%
Helping others at school	92%	94%	95%	96%
Helping to improve the environment	72%	74%	75%	76%
<b>Secondary</b>				
Helping others at school	38%	41%	42%	43%
Helping to improve the environment	49%	51%	52%	53%
Involved in voluntary work	26%	28%	29%	30%
Coaching for a sport/activity	31%	33%	34%	35%
Young people aged 13-19 involved in youth work gain a recorded outcome	66%	66%	66%	66%

**Table 14 – increase the number of young people who take a job or stay on in full-time education or in training at 16 to 18 years**

Second Local Area Agreement indicator	Baseline		Targets	
	2007-08 (FY)	2008-09 (FY)	2009-10 (FY)	2010-11 (FY)
16 to 18 year olds who are not in education, training or employment (NEET) (NI 117)	5.6%	5.4%	5.35%	5.0%
<b>Indicators subject to Reward Grant from first Local Area Agreement</b>				
Proportion of Year 11 students who leave target schools without entering full-time education, employment or training	2004-05 (FY) 14.2%	2008-09 (FY) 10.9%	2009-10 (FY) 9.8%	Not required

**Table 15 – increase the percentage of young people leaving care who have accommodation that meets their particular needs**

Indicators subject to Reward Grant from first Local Area Agreement	Baseline		Targets	
	2004-05 (FY)	2008-09 (FY)	Not required	Not required
The percentage of young adults leaving care aged 19 years who have their accommodation needs met	55%	55.5%		

## Annex 3

# Action Plan arising from last year's review

The review of the Plan 2006-07 identified a number of issues which respondents to the survey raised and which led to an action plan to address these. The following reviews the action that has taken place during 2007-08.

Proposed action	Summary of action taken
<b>Communication</b>	
Improve communication with partners highlighting the importance of the Plan to service planning and partnership work through formal meetings, emails, managers' cascade and team meetings	The Plan has been promoted at meetings of the Children and Young People's Strategic Board and the Children and Young People's Strategic Partnership Executive Group. Reference to the Plan has been made in (i) key documents of the Children's Trust Approach in Essex; (ii) in the County Council's strategy and policy papers; and (iii) in papers which have been considered by the County Council's Children, Young People and Schools Policy Development Group
Prepare summary versions of the Plan for: (i) Children (ii) Young people, parents (iii) Staff of partners and parishes	Draft summary versions of the Plan have been prepared for these groups; however, they have been put on hold in the light of proposed changes to the priorities in the Plan for 2008-09.
Prepare summary sheet of the contribution that schools can make to implementing the Plan	A draft paper has been prepared outlining the way in which the Plan can support schools' responsibility for promoting community cohesion; the paper will be finalised when the revised Plan for 2008-09 has been completed.

---

## Provision of data

---

Quarterly updates of needs assessment and performance data at county and local levels

The Joint Strategic Needs Analysis analyses need by super output area. The new Children's Needs Analysis has analysed need and performance at district level. This has been supplemented by a deep dive into the performance of specific teams within vulnerable children's services and scorecards for each Local Children and Young People's Strategic Partnership. Scorecards are being produced at team level showing the relative performance in order to highlight specific local problems that need to be addressed at the Children and Young People's Strategic Partnership Board.

---

Review the need for a further survey of pupils in the light of the Ofsted Tellus survey

The SHEU Survey organised and completed for April 2008. Results have been published.

---

## Partnership working

---

Improve clarity of roles of the organisations of the Children's Trust Approach in Essex

Accountabilities and responsibilities of the partner organisations in the Children's Trust Approach have been refined. New terms of reference have been agreed for the Children and Young People's Strategic Partnership Executive Group.

---

Improve links between the local Children and Young People's Strategic Partnerships and Local Strategic Partnerships (LSPs) and local Crime and Disorder Reduction Partnerships (CDRPs)

This is developing although the survey into partnership working demonstrates that more could be achieved to improve linkages.

---

Each local Children and Young People's Strategic Partnership to produce its own strategic plan in the light of the Essex priorities

Each local Children and Young People's Strategic Partnership has a local plan.

---

Improve joined up working at local level

Changes to the way in which local Children and Young People's Strategic Partnerships are organising themselves is resulting in greater clarity on their commissioning functions. More work is required on preparing a standard specification outlining the requirements on providers.

---

Improved involvement of service delivery leads with local Children and Young People's Strategic Partnerships

Work continues to involve some of the specialist service delivery leads in local Children and Young People's Strategic Partnership meetings. As greater emphasis is placed on local Children and Young People's Strategic Partnerships coordinating service delivery, the attendance of lead managers will be essential.

---

Improve responsiveness of services by:  
(i) continuing professional development  
(ii) identification and dissemination of good practice

(i) There is a commitment by partners to ensure staff have the appropriate qualifications and expertise. It is recognised, however, as demonstrated in some of the reviews of the priorities earlier in this document that there are pressures on services which are difficult to meet.

(ii) The identification and dissemination of good practice is improving at local level as services coordinate their provision. There is

still more to do in this area as demonstrated by the interviews with the chairpersons of local Children and Young People's Strategic Partnerships.

---

Ensure resources are used to have the greatest impact and that they are redeployed to meet emerging needs

The revised funding formula for schools more clearly allocates funding to those schools which are supporting pupils with the greatest need.

The Teams Around the School, the Child and Community was set up with a staff complement which was based on needs.

Services allocate resources according to need, including schools causing concern, education welfare support, teenage pregnancy hot spots and family learning and parental support . The commissioning strategy will take into account differentiating resources according to need.

---

Development of a model to monitor impact of prevention and early intervention

Significant work has been done to identify the effectiveness of preventative work, including reviews of patterns of spending benchmarked with other authorities, the causes of high referrals and the effectiveness of Teams Around the School, the Child and Community. These have identified a capacity gap at Tier 3 and plans to invest more heavily in preventative work are being developed. Essex is involved in a national project to establish a model for capturing impact of the preventative work (LARC).

---

---

Effective engagement with the voluntary sector

The main development in 2007/08 has been the changes to the way in which voluntary sector funding decisions are made. Voluntary sector funding, including former Children's Fund budgets, have now been allocated to the local Children and Young People's Strategic Partnerships to commission services against local priorities. This process has been developed in partnership with the Essex Council for Voluntary Youth Services (ECVYS).

---

### Consultation with service users

---

Improved participation to review the Children and Young People's Plan of

- (i) parents
- (ii) children and young people, including those with restricted verbal communication
- (iii) hard to reach groups

There was greater coverage this year compared to 2007 with over 5,000 parents contacted and a customised questionnaire in Widget for children with restricted verbal communication. Support was provided by Services to distribute questionnaires to a wide range of young people. Young people in school councils engaged in a research project to collect data. This remains an area for development and better coordination.

---

Improved participation in planning and monitoring services of

- (i) parents
- (ii) children and young people, including those with restricted verbal communication
- (iii) hard to reach groups

Users have provided feedback on the effectiveness of the services received. This remains an area for continuous development and better coordination. The high level conclusions arising from the review of the Plan will be fed back to respondents and to stakeholders.

---



**This booklet is issued by**

Essex County Council on behalf of the Essex Children and Young People's Strategic Partnership.

You can contact us in the following ways:

**By Post:**

Schools, Children & Families, Essex County Council,  
PO Box 11, Chelmsford, Essex CM1 1LX

**By telephone:**

01245 436606

**By fax:**

01245 436319

**By email:**

[cypplan@essexcc.gov.uk](mailto:cypplan@essexcc.gov.uk)

**Visit our website:**

[www.essexcypsp.org](http://www.essexcypsp.org)

The information contained in this document can be translated, and/or made available in alternative formats on request.

Published July 2008.

