

Newsletter

Swallows and Martins in August



The summer has been and gone and we are well into autumn now. The summer months have seen the park looking its best yet. The young trees planted in 2002 are growing well and those original plantations are looking much more mature. Many of you will have noticed the care taken to reduce weed growth in these areas over the years and this is paying off. Oak trees little more than nine years old have healthy crops of acorns this year. Despite the dry spring a good hay crop was harvested and the meadows quickly became thick with red clover again. The new plantations between Flemings Farm and New England Wood are doing well and August and September rain gave the whole park a fresh feel. Now, in a dry October, leaves are shriveling rather than changing colour.

Those of you with sharp ears will have heard more white throats and black caps in the trees this year and June and July were especially good for spotting baby birds. There were plenty of ducklings on the lake this year but sadly we didn't see the little Grebe that nested on the water lily pads last year. The Council are drawing up a proposal to allow all park users to use the lake responsibly, Watch this space!

Inside this issue

Annual General Meeting	2
New Developments	3
Events	4
Coming soon	5
Walking in the Park	5
Snapshots	6
Contribute to our Newsletter	6
Contacts	6

Annual General Meeting

Friends of Cherry Orchard Jubilee Country Park First Annual General Meeting

The first FOCOP Annual General Meeting took place on June 29th 2011 and was very well attended. We were lucky to be able to use St Laurence and All Saints Church for the meeting. The objectives for the forthcoming year were outlined, (see below) and when general business had been completed lively discussion took place especially with regard to the management of the lake and fishing. It was agreed that the park is for the use of the whole community and that the best way to avoid conflict was by providing more information and education regarding using the park and particularly the lake and this was added to the group's objectives for the year.

The Group's Objectives for the next year.

On-going:

- To continue to develop the good relationship with Rochford District Council
- To continue to support the application for the new bridleway
- To continue to press for byelaws for the park and possible guidelines
- To increase membership and fundraising

New areas of focus

- The lake, its management especially with regard to fishing
- To increase the facilities for those less able to walk by providing more benches
- To increase awareness of the wildlife in the park
- To publish a website to facilitate better communication

All members of FOCOP should have received a copy of the minutes of the meeting. If you do not have yours please contact the Secretary : penny.down@tesco.net



June 18th 2011—Looking east.

New Developments



Signs in the Car Park

Two signs have been erected in the car park. Similar to the other signs around the park these show all the paths and rights of way through the park and include a useful grid reference in case of emergencies.

The signs also display photographs of the park taken and donated by Friends of Cherry Orchard Park.

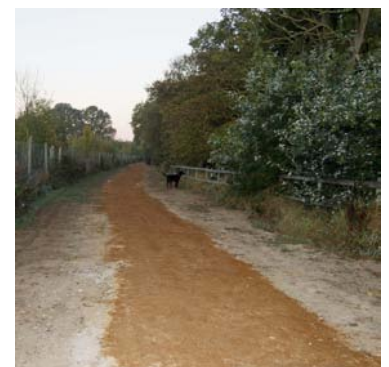
New Bridges

The more recently acquired fields behind Flemings Farm to the west of the park have proved difficult to cross for some due to the deep ditches that traverse them. The solution - two new bridges with hand rails. This is a real help. A further bridge is planned where the park enters New England Wood, however work on this may not be able to be started until spring next year.



The Concrete Bridge

The removal of the bars at each end of the 'crooked bridge' behind Blatches Farm has made it much easier to cross and access the footpath across the fields on the other side. Many thanks to Essex county Council's Public Rights of Way department for arranging to have this work done.



Footpath repair

A section of footpath, from the bridge at the River Roach (where the byway from Flemings Farm/Gusted Hall Lane join) to the newly fenced drainage dyke, has been upgraded. You will remember that this path was frequently impassable during the winter months as it quickly became a sea of slippery mud.

Events

Lake Days

The two awareness days held in August were very successful and enjoyable. Planned in response to concerns registered at the AGM about irresponsible fishing at the lake, Heather Meggison, Senior Environmental Assistant and Helen Galley, Assistant Public Open Spaces Officer at RDC, together with Friends of Cherry Orchard Park, met with fishermen and park users and were able to advise many about disposal of litter, the need for fishing licences, etc.



A sorry sight. 'Friend' Nick Cornish is a regular litter picker around the lake. This was collected on just one morning walk.

Lake Do's and Don'ts



- ✓ Fishermen should be particularly careful when casting into the lake that their hooks and lines do not catch other park users, including dogs.
- ✓ Dog owners are advised to check if and where any fishermen are situated before allowing their dogs to swim in the lake to avoid dogs getting caught up in fishing line.
- ✓ Remember to put all your litter in the litter bins that are located throughout the park or take it home with you. Litter, particularly fishing related litter such as fishing line, hooks and bait tins, can be dangerous to both the wildlife and other park users.



- ✓ Please be careful when feeding the ducks as any bread left in the water may encourage rats. Feed the ducks a little at a time until they stop feeding.
- ✗ One end of the lake is fenced off. This is to provide protection for the wild birds nesting there. Please **do not** climb over this fence or enter this area to fish or allow dogs to swim in this end of the lake. **It is an offence under the Wildlife and Countryside Act 1981 to disturb nesting birds.**
- ✗ **Do not** throw anything into the lake as this may be detrimental to the wildlife.
- ✗ **Do not** swim in the lake it is not suitable for human swimming.
- ✗ **Do not** damage the trees or shrubs in the park.

Recommendations

- The use of barbecues, the setting of camp fires and the use of Chinese lanterns in the park are not recommended or endorsed by Rochford District Council due to the risk of fire in the park and surrounding areas, especially during periods of prolonged hot weather. In addition to being a fire risk, the remains of Chinese lanterns when they return to the ground become litter and may also be harmful to animals.
- Overnight camping is not recommended anywhere within the park.
- The lifebuoys situated around the lake are there for use in an emergency. We have had to replace several of these lifebuoys as they have either gone missing or been damaged to such an extent that they were not fit for purpose.

The above is an excerpt from a new information leaflet, specifically about the lake and its use, published by RDC. You can access a copy at the following web address: -

http://www.rochford.gov.uk/pdf/enviro_n_thelake.pdf



Cherry Orchard Jubilee
Country Park

The Lake



Cherry Orchard Jubilee Country Park is a relatively new addition to the parks in the District and has been growing since Her Royal Highness Princess Anne visited it in 2003 to celebrate the completion of its first phase.

As the park is so 'young', there are currently no byelaws applicable to the area. It is a shared facility and open to everyone, so Rochford District Council would ask that people using the park are considerate to other users.

Coming Soon

Walking the Dog

An awareness morning with hints and tips on how to be a responsible dog walker. Heather and Helen of RDC together with some Friends of Cherry Orchard Park will be in the Car Park off Cherry Orchard Way on Saturday morning, November 12th.

Looking forward to seeing lots of you there.



Walking in the Park



A



B



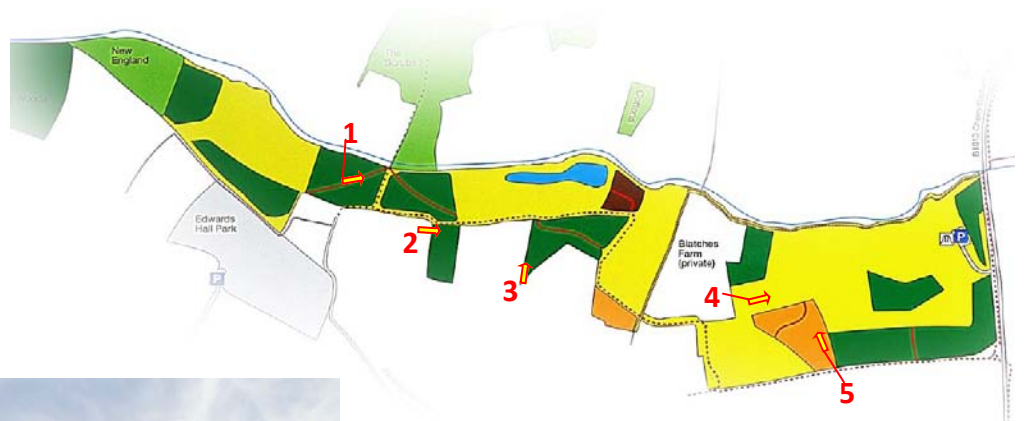
C



E



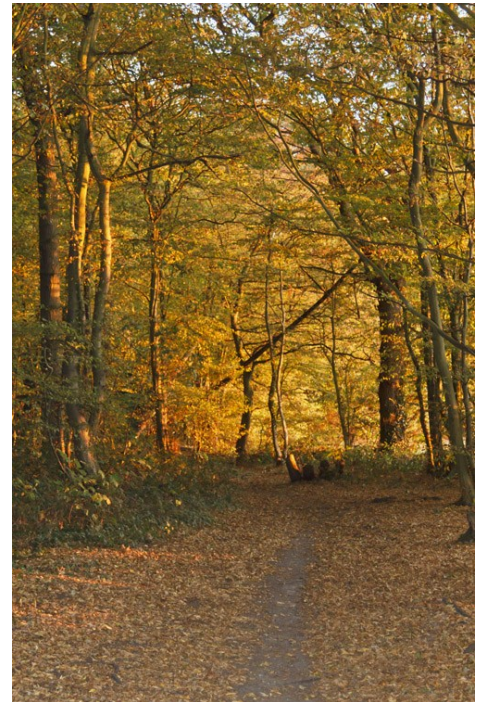
D



Can you match the locations on the map to the photographs? Answers below.

1: B, 2: C, 3: A, 4: E, 5: D.

Season of mists and mellow fruitfulness



Contacts

Graham Hutchinson, Chairman
Friends of Cherry Orchard Park
graham@chpkpmtrs.demon.co.uk

Helen Galley
Assistant Public Open Spaces Officer
Rochford District Council
01702 318111

Heather Meggison
Senior Environmental Assistant
Rochford District Council
01702 318057

On-line,
Rochford District Council
[http://www.rochford.gov.uk/
leisure_and_tourism/
woodlands_and_parks/](http://www.rochford.gov.uk/leisure_and_tourism/woodlands_and_parks/)

FOCOP Facebook page

Contribute to our Newsletter

Send your photos, letters, articles, news or suggestions to penny.down@tesco.net for inclusion in the next edition of the Newsletter. Thank you!



Jackie Coste took her friends to a party in the park to celebrate her dogs' birthdays. Jackie is on the right, with Ollie and Stig. Thanks for the photo Jackie. Looks like fun!