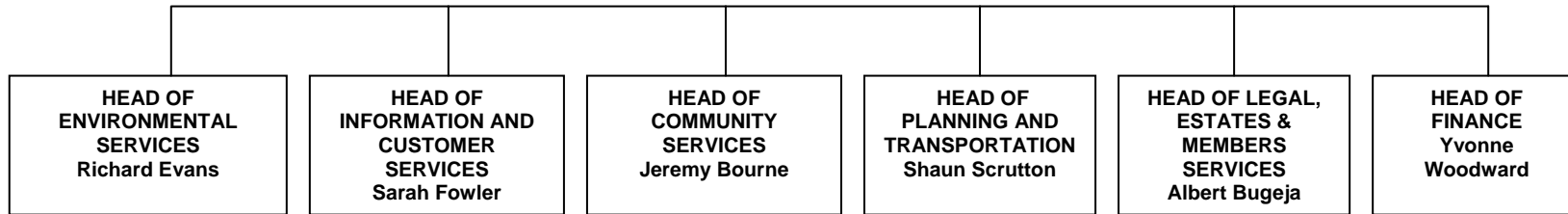


**CHIEF EXECUTIVE  
AND  
HEAD OF PAID SERVICE  
Paul Warren**

**PEOPLE AND  
POLICY  
MANAGER  
Claudia  
McClellan/Janet  
Cox**



- Environmental Protection and Climate Change
- Commercial Regulation (including Licensing)
- Public Health and Safety
- Waste Recycling & Management /Street Scene (including enforcement)
- Woodlands/ Parks/Open Spaces/Tree Preservations

- Information Technology
- Website & Intranet
- Geographical Information System (GIS)
- Local Land & Property Gazetteer (LLPG)
- Customer Services including information/ reception areas & switchboard
- Support Services including document management & print room
- Elections & Electoral Registration

- Benefits and Council Tax
- Housing Services including Housing Management (client side), Housing Advice, Homelessness Grants, Housing Strategy
- Leisure/Arts and Culture including Tourism and Heritage
- Community Safety/Anti Social Behaviour
- Children and Young People
- Health Promotion
- Adult Services

- Development Management
- Planning Enforcement
- Building Control
- Spatial Planning
- Concessionary Fares
- Car Parks/Taxis
- Parking Enforcement Transportation Policy
- Economic Development

- Legal Services
- Land Charges & Searches
- Property/Asset Management/ Maintenance
- Member & Committee Services
- Cemeteries
- Burial Administration
- Highway Orders, Drainage, Street Lighting & Engineering Services
- Civic and Ceremonial Events

- Financial Management and Exchequer functions
- Internal Audit
- Performance Management
- Value for Money/Use of Resources
- Strategic Procurement
- Insurances/ Strategic Risk Management
- Treasury Management

- Human Resources
- Learning and Development
- Corporate Health and Safety
- Corporate Policy and strategy
- Partnership Development and Activity
- Community Planning and consultation
- Internal and External Communications
- Emergency Planning and Business Continuity