

Crime & Disorder Reduction in Rochford District

Annual Partnership Plan 2009/2010

ROCHFORD DISTRICT
Crime & Disorder
REDUCTION
partnership

Requesting this information in alternative formats

If you would like this information in large print, Braille or an alternative language, please phone 01702 546366.

Contents

	Page
1 Introduction	4
2 Rochford Now	4
3 Neighbourhood Meetings	6
Area Committees	6
4 Rochford Local Strategic Partnership	7
5 Partnership Strategic Vision.....	7
6 Partnership Structure	8
7 Roles of the Groups	9
8 2008/2009 Strategic Assessment Priorities.....	11
9 Priority achievements from 2008/2009.....	11
10 Priorities 2009/2010	12
Strategic Assessment	12
Strategic Priorities for 2009/2010.....	13
Action Plan 2009/2010.....	13
11 Linked Plans and Strategies	13
12 Contacts.....	15

1 Introduction

In 2006, a review of the partnership provisions of the Crime and Disorder Act 1998 and the Police Reform Act 2002 lead to a series of recommendations. The 1998 Act included the requirement to produce a detailed crime and disorder audit; consult with key agencies and the wider community; use the findings to identify strategic priorities and set targets and performance measures. The review sought to strengthen and extend the original 1998 Act requirement to undertake a crime and disorder audit and as a result a new set of national minimum standards came into force in August 2007.

The new minimum standards include a requirement to provide an annual Strategic Assessment and a three year Partnership Plan (2008-2011), reviewed annually. The purpose of the partnership in conducting a Strategic Assessment, which includes the analysis of crime and disorder, is to improve understanding of local problems and their potential causes and to respond more effectively to the communities we serve by setting clear and robust priorities. The Strategic Assessment for 2009/2010 (year 2) has recently been completed and the actions within the Partnership Plan reviewed and amended to reflect changing priorities identified through the Strategic Assessment. Within the renewed Partnership Plan is the Action Plan which details how these priorities will be addressed by the partnership throughout 2009/2010, with our performance being regularly measured against agreed targets.

2 Rochford Now

Rochford District^{*} is situated in South East Essex within a peninsula between the Rivers Thames and Crouch and with the North Sea to the East. The South of the District adjoins the urban areas of Southend-on-Sea and Castle Point. Much of the District's 65 square miles is designated as green belt and there are many miles of attractive coastline and nationally important areas of salt marsh.

The largest town, Rayleigh and the other two main settlements of Rochford and Hockley have good rail connections to London and there is access to the A127 London-Southend Arterial Road and then to the A13 and M25. London Southend Airport is primarily situated within the District and the airport and surrounding area are part of the Thames Gateway regeneration area.

In the 2001 census Rochford District had a population of approximately 79,000 people. The Office of National Statistics 2007 mid year population estimates showed Rochford District as having a population of 82,200. Compared to the East of England, Rochford has fewer young children (0-4yrs), fewer young adults (19-31yrs) and overall more older adults (52-69yrs) and marginally more older adults aged 80yrs and over.

^{*} Extract from Rochford LSP's Sustainable Communities Strategy 2009-2021.

The black and minority ethnic (BME) population is relatively dispersed amongst the urban settlements. The estimated population by broad ethnic group, 2004:-

Rochford

- White % 97.0
- Mixed % 0.9
- Asian or Asian British % 0.9
- Black or Black British % 0.8
- Chinese or Other % 0.5

Source: ONS

The Government's standard measure of deprivation and inequality in England is the Index of Multiple Deprivation (IMD). The IMD covers a number of aspects of deprivation including disadvantaged in education, income, employment, health and housing, The District is relatively affluent being 316th least deprived out of 354 Districts. The District has approximately 33,700 homes and one of the highest proportions of owner-occupation in the country at 86%. Social housing comprises approximately 8%.

Rochford District is divided into six Neighbourhood Policing areas:-

Rayleigh (A320)	Rochford (A321)	Hockley (A322)	Hullbridge (A323)	Canewdon & Ashingdon (A324)	Wakering (A325)
Includes: Whitehouse Lodge Wheatley Grange Sweyne Park, Downhall & Rawreth, Trinity Rayleigh Central Wards	Includes: Hawkwell North, Hawkwell South, Rochford Wards	Includes: Hawkwell West, Hockley West, Hockley North, Hockley Central Wards	Includes: Hullbridge	Includes: South Fambridge, Great Stambridge, Paglesham Ballards Gore	Includes: Barling & Sutton, Foulness Great Wakering

There are two Police Stations in the District based in Rayleigh (24 hours) and Rochford (Mon-Fri 9-5pm, closed to the public at weekends).

Neighbourhood policing is about local policing; Police, partners and the community working together, to identify and tackle issues of concern across the District and the rest of Essex. Neighbourhood policing is the creation of a team dedicated to each local area. These areas are small and typically will include a Sergeant, a Neighbourhood Specialist Officer (NSO), two Police Community Support Officers (PCSO's) and Special Constables. The Neighbourhood Policing Team works with local partners and the communities to make the Neighbourhood a safer place.

3 Neighbourhood Meetings

These are organised by the Neighbourhood Policing Teams. Each Neighbourhood Policing Team holds a regular Neighbourhood Action Panel meeting known as a NAP. The panel consists of people who live or work in the Neighbourhood or those who provide a service to the local community. They provide input on the issues which matter to the community and these issues are taken to the NAP for them to consider. The NAP will agree community priorities and decide upon a realistic and achievable course of action so that the Police can deliver results which matter to those in that community. Priorities are set by the community without influence from the police.

Forthcoming dates for NAP meetings can be found on the Essex Police website <http://www.essex.police.uk/yourarea> and then select Rochford District.

Area Committees

The Council has split the District into three Area Committees covering:-

Central Area Committee	East Area Committee	West Area Committee
<p>Covering: Hawkwell Hockley Hullbridge</p>	<p>Covering: Ashingdon Barling Magna Canewdon Great Wakering Paglesham Rochford Stambridge Sutton</p>	<p>Covering: Rawreth Rayleigh</p>

The Area Committees are a mechanism to identify the needs of the community through consultation and involvement of the community and other appropriate bodies including the Rochford Crime and Disorder Reduction Partnership and other relevant Rochford District Council departments such as Street Cleansing and Essex County Council Highways. A feature is the Community Forum at which Councillors hear questions and issues raised by members of the public.

Forthcoming dates for the Area Committees can be found on the Rochford District Council website <http://www.rochford.gov.uk> and then follow the link through Council Minutes, Agendas and Meetings

4 Rochford Local Strategic Partnership

The Local Strategic Partnership (LSP) for Rochford District has produced a Sustainable Community Strategy for the period 2009-2021. The LSP is a partnership of key Public, Private and Voluntary sector organisations who have a duty to develop a long term vision and strategy for the area that contributes to and influences the Essex wide Local Area Agreement and the Local Development Framework for the District.

The first Community Strategy for Rochford was published in 2004 and the partnership has delivered on a number of key actions, some of which are still ongoing.

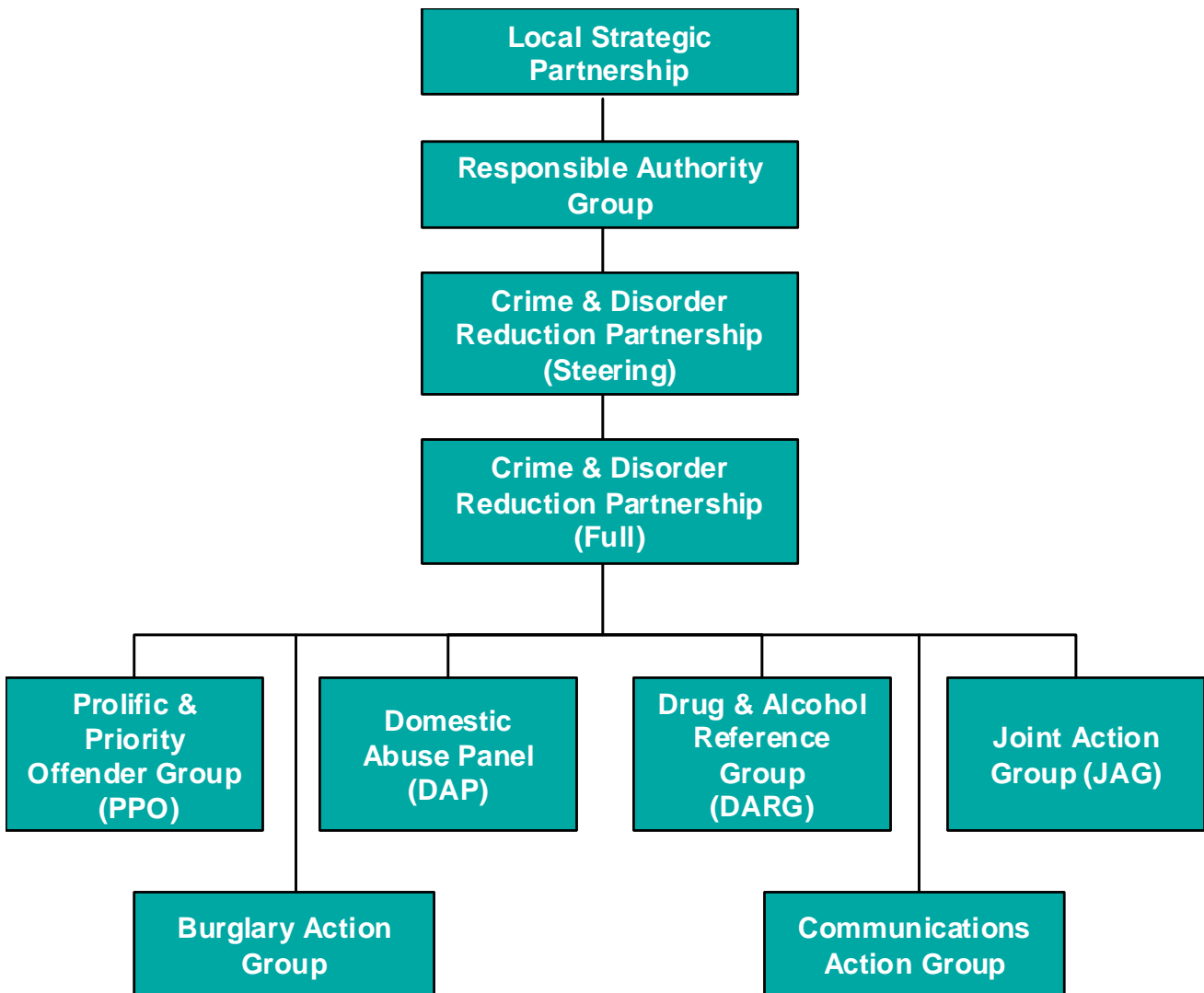
The Local Strategic Partnership has identified and will concentrate on seven key areas for the next three years but also managing performance of, undertaking or supporting work in other areas. An annual Action Plan will be developed to monitor the progress and performance of projects, activity and actions around these seven key priorities. See page 14.

One of the seven key areas is Keeping Rochford Safe. The objective is to ensure that our communities feel safe and that their fear of crime and their perception of crime decreases. The latest Local Government User Satisfaction Survey (LGUSS) recorded that local residents display disproportionate levels of fear of crime compared to actual crime statistics. This suggests that perception and the fear of crime is an issue within our communities and therefore Rochford Crime and Disorder Reduction Partnership will work in partnership with the Local Strategic Partnership (LSP) to address this.

5 Partnership Strategic Vision

This CDRP Annual Partnership Plan 2009/2010 has been produced with the following vision in mind:

“Working in partnership to make our District a place which provides opportunities for the best possible quality of life for all who live, work and visit here”



6 Partnership Structure

The structure of the Crime and Disorder Reduction Partnership, sub groups and its reporting line.

The CDRP Steering Group meets monthly and its role is to ensure that all day-to-day operational and performance functions of the CDRP are effectively commissioned, delivered, evaluated and reviewed. The Steering Group also oversees the annual review of the Strategic Assessment and Partnership Plan and report directly to the Responsible Authority Group (RAG). The Chairman of the Crime and Disorder Reduction Partnership also becomes the Member of the County Strategic Group-Safer Essex Partnership.

The Crime and Disorder Reduction Partnership has a small body of statutory members who are required under the Crime and Disorder Act 1998 to work in partnership to combat local crime and disorder. These key statutory partners are: Rochford District Council (RDC), Essex County Council, South East Essex Primary Care Trust, Essex Police, Essex Police Authority, Essex Fire and Rescue Service and Essex Probation Service.



These seven key statutory partners have a legal obligation to comply with the requirements which include the placing of the duty on the Steering Group to prepare the annual Strategic Assessment.

7 Roles of the Groups

Local Strategic Partnership

- Previously explained on page 7.

Responsible Authority Group

- A joint strategy group that covers Rochford District and Castle Point. Representation is at Executive level from each Responsible Authority. The group is chaired on an alternating basis by the Chief Executive of each local authority and the Essex Police Divisional Commander. The Crime and Disorder Reduction Partnerships for both areas work on actions and issues within each area under the overall strategic guidance provided by the RAG, which monitors delivery of the respective strategies and gives advice and guidance as and when necessary. The RAG also has responsibility for approval of the Home Office spending allocations.

Crime and Disorder Reduction Partnership (Full)

- The CDRP comprises of representatives from each of the statutory partners (as detailed above) together with members from non-statutory agencies and the voluntary sector.

Crime and Disorder Reduction Partnership Steering Group

- The Steering Group is the body that provides strategic leadership and overall management of the partnership. They are responsible for formulating the Annual Partnership Plan, managing the performance and finances of the Partnership and allocating funding to projects.

Prolific and Priority Offender Group (PPO)

- The Government tasked all CDRP's with progressing a national strategy to reduce crime by targeting prolific offenders. This has necessitated the formation of a group from both the CDRP and criminal justice agencies to ensure that the three strands of the Strategy - Catch and Convict, Prevent and Deter and Rehabilitate and Resettle are progressed against timescales set by Central Government. The group is shared with Castle Point and is intended to manage those on the PPO programme with input from all agencies involved in the process.

Burglary

- This is a new sub group set up to address the priority of reducing the number of Domestic Burglaries in the Rochford District for 2009/2010 by 5%. This small group consists of various Steering Group members and is chaired by the Rochford District Commander from Essex Police.

Domestic Abuse Panel (DAP)

- This group whose membership includes representatives from the police, social services, health, local authority community safety teams and the voluntary sector has lead responsibility for delivering the programme of work under each of the CDRP's Domestic Abuse primary objective.

Drug and Alcohol Reference Group

- Comprising crime and disorder, health and criminal justice professionals, along with local authority elected Members and representatives from the voluntary sector, this group addresses a wide variety of drug and alcohol issues on behalf of the CDRP, under the auspices of the Essex Drug and Alcohol Action Team (DAAT). The DARG is instrumental in delivering activities to achieve the drug and alcohol related objectives within the Action Plan.

Communications

- This is a new sub group set up to address the priority of communications and public engagement. This small group, chaired by the CDRP/Essex Police Media Officer and a number of representatives from the Steering Group will be raising awareness and promoting the work of the partnership through leaflets and the media and improve two-way interaction with the community.

Joint Action Group (JAG)

- The group whose membership includes Rochford District Council officers, Essex Police, ECC TASC (Essex County Council Team Around Schools, Children and Families), RDC Contract Monitoring and Sita, Rochford Housing Association and Essex Police Crime Reduction Officer. The JAG is a reactive group which meets monthly to discuss emerging concerns related to crime and disorder and anti-social behaviour to decide on and implement a joined-up strategy and set of actions for addressing these concerns both with internal and external partners.

8 2008/2009 Strategic Assessment Priorities

The priorities identified from the first Strategic Assessment in 2008/2009 were:-

- A Reduce all reported Crime by 5% during 2008/2009**
- B Engage with local communities to understand and deal with issues raised and provide reassurance regarding perception of safety in the area**
- C Reducing Crime, Disorder and Anti-Social Behaviour attributable to young people**
- D Support measures which enable the safeguarding of victims of Domestic Abuse and increase detection rates of perpetrators**
- E Reduce both Alcohol and Substance Misuse and the harm caused, especially amongst young people**
- F Reducing the number of people killed and seriously injured on our roads**
- G Reduce reoffending by supporting measure to facilitate the rehabilitation and resettlement of offenders**

9 Priority achievements from 2008/2009

In its first year of the Strategic Assessment Rochford Crime and Disorder Reduction Partnership met and exceeded on two of its priorities last year:-

Reducing all crime by 5%

The baseline was **3068** offences with a **5%** target reduction for 2008/2009 of **2923** offences. The partnership achieved an overall reduction in all crime of **8.94%**, reducing the total number of offences to **2802**.

As at the end of the Financial Year 2008/2009, Rochford District has been placed 1st out of 15 Local Authorities in our 'Most Similar Group' (based upon a similar population and crime figures according to Home Office Iquanta) for All Crime with 34.103 crimes per 1,000 residents, compared with the average family group for County of Essex being 56.523** as at March 2009.

** Home Office Iquanta Apr 08-Mar 09.

In addition in June 2008 the Home Office sent a letter

‘to formally congratulate the partners of Rochford CDRP on its excellent performance particularly in relation to achieving its crime reduction targets.

Since April 2004 Rochford has reduced its BCS crime by 32.9% against a crime target to March 2008 of 13.5%. This, in terms of % is the biggest decrease across the whole of the Eastern Region’

This is the second consecutive year that Rochford District has had the largest reduction in BCS crime in the whole of the Eastern Region.

The second priority which the partnership has exceeded is

Rochford Killed Seriously Injured (KSI’s)

KSI Category	2007 End of Year Figure	2008 Target (Jan-Dec)	2008 End of Year Figure	% Reduction from previous year
All County	884	799	706	20.1% Reduction
All Rochford	31	34	22 (2 nd lowest in County)	29.1% Reduction

Rochford District has already achieved the Essex County Council KSI target for 2010 by being 12 below in 2008 and 9 below in 2007.

The recommendation from the Rochford District CDRP following its success at significantly reducing the number of KSI’s and exceeding its reduction target on ‘All Crime’ is to alter some of the 2009/2010 priorities .

The CDRP will continue to monitor KSI’s and All Crime and support previously funded projects to maintain its reduction target.

From the scanning and analysis of various datasets and information around crime and disorder which forms part of the Strategic Assessment the priorities for 2009/2010 are detailed on page 13.

10 Priorities 2009/2010

Strategic Assessment

The aim of the Strategic Assessment is to identify current patterns, trends, future gaps and risks that impact upon Rochford District and the communities it serves, linked to crime, anti-social behaviour, substance misuse, fear of crime and behaviour adversely affecting the environment.

A significant part of the Strategic Assessment is the development of a comprehensive analysis of community safety related issues and how these link to our partner agencies' most recent crime data, performance and service plans. The document is about future performance, in response to intelligence led information, analysis and data, that inform the seven statutory partners of the priorities and needs of the local community.

Ultimately, the aim of the Strategic Assessment is keeping Rochford safe, ensuring that our community feels safe and that their fear of crime and their perception of crime decreases.

Strategic Priorities for 2009/2010

Rochford District Crime and Disorder Reduction Partnership have agreed to focus on the following priorities (in no particular order) over the next 12 months (financial year April-March):-

- (1) Reduce domestic burglary by 5% during 2009/2010.
- (2) Reduce Anti-Social Behaviour by 5% during 2009/2010.
- (3) Improve public engagement and increase public reassurance.
- (4) Reduce the number of repeat victims by 5% and increase reporting rates of domestic abuse by 5% during 2009/2010.
- (5) Reduce alcohol related disorder by 5% during 2009/2010.

Action Plan 2009/2010

The existing sub groups Domestic Abuse Panel, Drug and Alcohol Reference Group and the Joint Action Group along with two new sub groups, Communications and Burglary will each address the priorities with allocated funding to help achieve the aims and objectives of the Action Plan.

This Action Plan will be used to provide a general overview of performance against the agreed milestones/outputs and outcomes laid out in the 2009/2010 Partnership Plan and Action Plan. This document is reviewed monthly and therefore to obtain the latest version, please log onto our website pages at <http://www.rochford.gov.uk/cdrp>.

11 Linked Plans and Strategies

This Annual Partnership Plan for 2009/2010 sets out the Key Strategic Priority areas for the CDRP and it is recognised that these priorities are not delivered entirely by the Partnership and that other plans and strategies contribute such as:

Rochford Sustainable Community Strategy 2009-2021

The Sustainable Community Strategy document gives all organisations a clear focus on the key priorities to be tackled within the Rochford District.

The seven key priorities are:-

- Supporting the Ageing Population
- Fostering Greater Community Cohesion
- Strengthening the Third Sector
- Increasing Accessibility to Services
- Keeping Rochford Safe
- Encouraging Economic Development Skills, Employment and Enterprise
- Promoting a Greener District

Other Strategic Partnerships with links to the CDRP

- Castle Point and Rochford Children and Young Persons Strategic Partnership (CYPSP)
- Castle Point and Rochford Health and Wellbeing Partnership
- Essex Drug and Alcohol Action Team (DAAT)
- Safer Essex

Other Plans

There are a number of other plans produced by local partners which are aimed at addressing particular aspects of this Partnership Plan.

These include:-

- Policing Plan 2009/2010
- Drug and Alcohol Reference Group Action Plan
- Domestic Abuse Panel Action Plan
- Essex County Fire and Rescue Service Strategy (Southend and Rochford Community Command Plan)
- Essex Road Safety Strategy 2006-2011
- Children and Young People's Strategy
- South East Essex NHS Rochford Joint Strategic Assessment

12 Contacts

If you would like to know more about the Rochford Crime and Disorder Reduction Partnership, find out about public meetings or receive a copy of the CDRP Newsletter please contact us using one of the following:-

Rochford District Council Community Safety Team

Telephone: 01702 318104

Email: communitysafety@rochford.gov.uk

Other useful contacts

Rochford District Police
0300 333 4444

Rochford District Council
Anti-Social Behaviour Co-ordinator
01702 318103

Essex Fire and Rescue Community Safety Team
01702 614433

National Domestic Violence helpline number
0808 2000 247

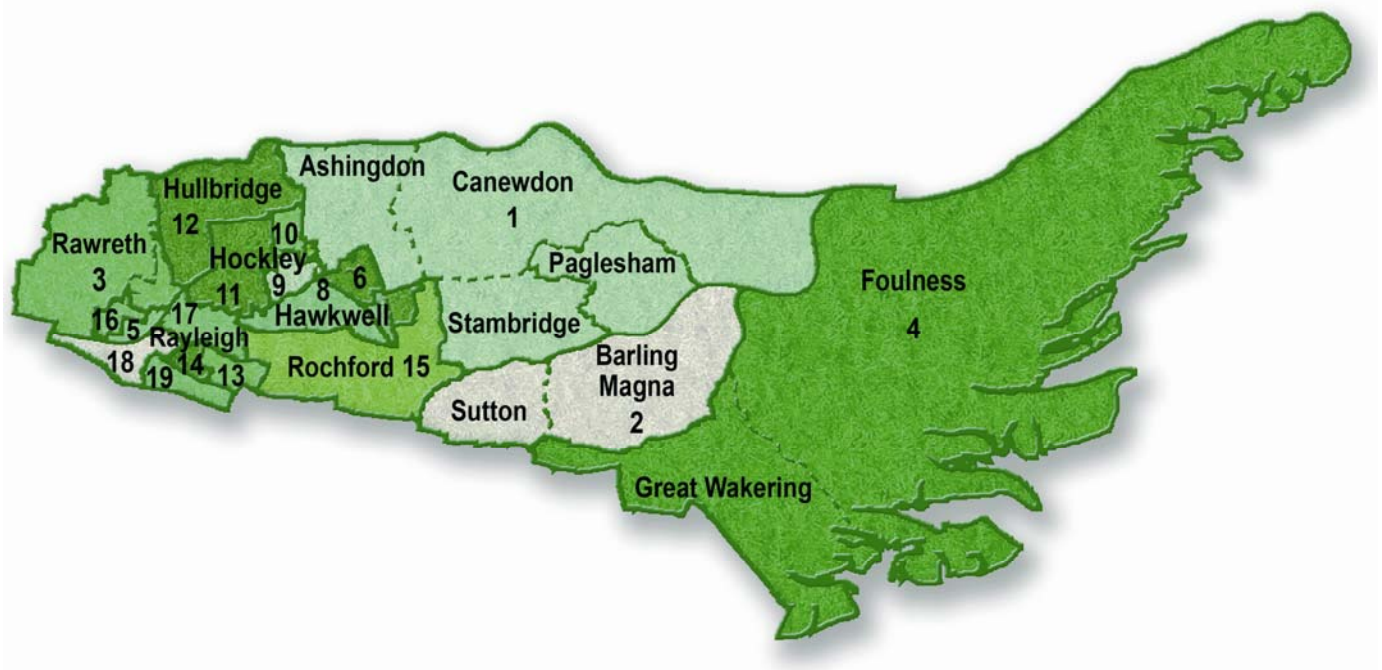
Alcoholics Anonymous
0845 769 7555

FRANK (Drugs)
0800 776600

Crime Reduction Officer – Essex Police
0300 333 4444

Crimestoppers
0800 555 111

Neighbourhood Watch
01268 770519



Report Compiled by

Rochford CDRP Steering Group and Rochford Community Safety Team

Contact: Melanie Yolland, Community Safety Co-ordinator
Rochford District Council, South Street, Rochford Essex SS4 1BW
Tel: 01702 318104

Email: melanie.yolland@rochford.gov.uk

Produced by the
Crime and Disorder Reduction Partnership